



**Lot # 1463** California, Yosemite **South Hite Gold Mining Company Stock Certificate** 1881 Location of Works: Hites Cove, California, which is in Mariposa County near Yosemite. Inc. in California, January 6th, 1881. No. 166, issued for 100 shares to W.M. Shaw on Feb.

Union Copper MC (Stockton); Standard American Dredging Co.; Amador Reduction Co.; Villagrana MC (1884); etc. Please inspect. (Prag Collection) **Est. \$120 ~ \$200** HWAC# 34959



4th, 1881. Signed by S.D. Osborne as vice-president and J.F. Lowle as asst. secretary. Not cancelled. Black border and underground mining vignette. Engraved by Maverick & Wissinger, NY. Folds and some soiling upper right. 6.25" x 10" From the 1881 Report of the Director of the Mint: "Improvements are reported in the Hite Mine. The South Hite Mining Company are making developments on their 500-foot level ,which shows a continuous chute of ore from the croppings down to that point. They are now sinking the Gergin Shaft and are running several levels and cross-cuts" (pg.37). **Est. \$100 ~ \$200** HWAC# 41161

**Lot # 1464** California, Yreka **Pamphlet - Historical Sketch of Mining in the Vicinity of Yreka, Siskiyou County** RARE! Siskiyou County has the distinction of the first gold discovery in Northern California. Dr. Hearn made the first discovery (The Pine Tree) on Yreka Flats near Hawkinsville in 1851. Etc. Where the Little Tiger and Mount Shasta Mining Co.'s properties were located (promotional 4 pages) (Ref. P40) **Est. \$150 ~ \$300** HWAC# 41369



[See Photo Online](#)



**Lot # 1469** California, **California Mining Dredging Stock Certificates** 1910-1956 Scarce dredging company stocks. Lot of 4 different. Included: Yuba Consolidated Gold Fields (1956, punch cancelled), South Yuba Mining & Smelting Co. (1911, not cxl, mining vignette), The Yuba Construction Company (1910, punch cxl, dredge vignette), and Natomas Company of California (1915, punch cxl, eagle vignette). **Est. \$100 ~ \$200** HWAC# 41168

**Lot # 1470** California, **California Mining Medallions** Gold nugget pin, 1 1/8". Six medals: san Diego Federal Savings & Loan, 1885-1955, nice embossed image of miner; E. Clampus Vitus medal; Bank of California; California Gold Rush Centennial; Pony Express Centennial; California Diamond Jubilee. Money clip. **Est. \$100 ~ \$200** HWAC# 39654



[See Photo Online](#)

**Lot # 1465** California, **American River Dredging Photo Collection** 9 Photographs of the American River and dredging operations on various places including the North Fork Ditch Settling Pond (behind and beyond Monte Reo School), Milton Cragy's House (Lew Smith's Stepfather), and more. **Est. \$100 ~ \$200** HWAC# 40149

**Lot # 1466** California, **California Gold Nugget Souvenirs** Not real nuggets- Come to Sacramento Convention Capital; Path of Gold, San Francisco, 1916; Pioneer Frisco. **Est. \$100 ~ \$150** HWAC# 39660



[See Photo Online](#)

**Lot # 1471** California, **California Mining Stock Certificate Collection** Lot of 6. All different. Includes: Veta Grande Mining Company (1921, cancelled), Selby Smelting & Lead Company (1907, cancelled), The Shasta May Blossom Copper Co. Consolidated (1919, very pictorial, not cancelled), The Gilpin Hurricane Gold Mining Company (1910, pictorial, not cancelled), Trinity Dredging Company (unissued but signed by president), and The Plumba Gold Mining Company (1923, cancelled, almost in two pieces). **Est. \$80 ~ \$120** HWAC# 42109

**Lot # 1472** California, **Choice California Oil Stock Certificate: Sedalia & California Oil Co.** 1902 Gorgeous certificate. Inc. in California. No. 28623, issued for 5 shares to Bearer on April 26, 1902. Printed signature of the president. Live signature of the secretary. Not cancelled. Ornate patriotic border and two vignettes of oil derricks (one gilt). Printed by Bankers & Merchants Litho., Kansas City, MO. Twenty-seven coupons attached. 16" x 11" with coupons. Deep vertical fold at left. Some toning. **Est. \$80 ~ \$150** HWAC# 42133

[See Photo Online](#)

**Lot # 1467** California, **California Gold Pan Souvenirs** Five California gold pan souvenirs. **Est. \$100 ~ \$150** HWAC# 39661

**Lot # 1468** California, **California Mining Checks** Lot of 30. Includes: Volcano Copper Gold & Silver MC (unused 1860s); Croesus Gold Mining & Milling Co. (Grass Valley); Ante Up MC (Alleghany); Idaho Maryland Mines Corp. (Grass Valley); Union Hill Mines; Maryland GMC (1893, Grass Valley); Idaho Quartz MC (Grass Valley, 1892); South Water & Mining Co. (Nevada City, 1882); Mayflower MC (Nevada City);

## MINING EPHEMERA

[See Photo Online](#)

**Lot # 1473 California, Color Negative of a Miner with his Pack Mule** Great condition. Slide printed with, "Old miner with outfit, California." Used by the Chicago

Public Schools. Very interesting piece and rather unique piece. Shows very well for a glass negative. **Est. \$50 ~ \$150 HWAC# 42669**

**Lot # 1474 California, Early California Mining Lithographs** Seven duplicate lithographs showing three miners: panning, using sluice box, and an arrasta. By RS Dogge. Two Bunker Hill lithographs thrown in for luck! **Est. \$100 ~ \$300 HWAC# 41240**



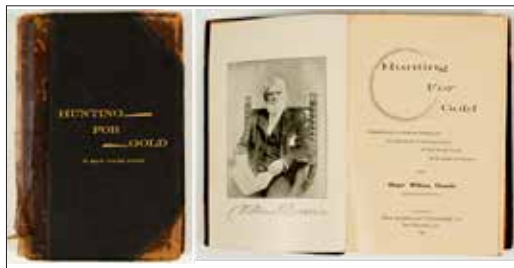
[See Photo Online](#)

**Lot # 1475 California, Echoes of the Past about California** 1928 Rare book: "Echoes of the Past about California" by General John

Bidwell. "In the Camp and Cabin" by Rev. John Steele. Published by Chicago, The Lakeside Press, R. R. Donnelley & Sons Co. Christmas, 1928. Nice fold out map of The Mining District of California. Hardcover, maroon, reprint, 7" x 4,25", 377 pp. **Est. \$50 ~ \$100 HWAC# 43410**

**Lot # 1476 California, Giant Powder Company Archive** 1894-1907 Lot of 10 letters for this company made famous for its explosives in the 19th century. Nine of the letters are on letterhead from the Clipper Gap Mills (Placer County, California), are dated 1907, and are addressed from the superintendent of the mills to the Union Iron Works in San Francisco. The tenth letterhead is from Geo. Obenauer, representative for the company in SF, addressed to AM Holter in Helena, Montana (with a dateline of Butte, Oct. 31, 1894). (Prag Collection) **Est. \$70 ~ \$150 HWAC# 34900**

[See Photo Online](#)



**Lot # 1477 California, Hunting for Gold** "Hunting for Gold" by Major William Downie, signed by author. "Reminiscences (sic) of Personal Experience and

Research in the Early Days of the Pacific Coast from Alaska to Panama". Published by The California Publishing Co., San Francisco, Cal., 1893, 1st edition. Hardcover, black, leather, brown leather corners, spine missing. 9" x 6", 407 pp. **Est. \$100 ~ \$200 HWAC# 43415**

**Lot # 1478 California, Mariposa Land & Mining Company: \$1,000 in Gold Bond** 1876 Certificate No. 110 with six month interest coupons #2 (Jan. 1877) through #20 (Jan 1886) remaining intact. Interest at 7% per annum. Incorporated in California in 1874 and signed by president, Solomon Heydenfeldt (The first elected California Supreme Court Justice; was part of the 1856 scandal) and secretary, XXXXXX Leavitt. 16 X 18 printed in black with a two vignettes, one of a miner and his dog, the other of a wagon train under attack by Indians. Printed

by the Continental Bank Note Co. Fremont spent six years after California statehood attempting to have his Mexican Land Grant validated under American Law. Finally, in 1856, the Supreme Court (Heydenfeldt was on the Court at that time; a conflict of interest???) restructured and approved of his original claim. Known as the Rancho Las Mariposas. See online for full story. **Est. \$250 ~ \$500 HWAC# 41812**



**Lot # 1479 California, Photo of Mojave Desert Mine** Photo of Mojave Desert Mine, possibly lower Randsburg. This settlement is located near the mine in which most of the people worked. The mine on the side of the hill and the houses are similar to many of the mining communities in the west. **Est. \$100 ~ \$150 HWAC# 41948**

**Lot # 1480 California, Southern California Desert Mining Stock Certificates** 1903-1956 Lot of 5 different. Included: California King Gold Mines Company (1903, not cancelled, very ornate), Vanderbilt Mines Company (1933, not cancelled, three mining vignettes), Mojave Tungsten Company (1917, not cancelled, underground mining vignette), Coso Uranium, Inc. (1956, not cancelled), and Furnace Creek Copper Company (1908, not cancelled, allegorical vignette). Please inspect. **Est. \$100 ~ \$150 HWAC# 42146**



**Lot # 1481 California, Three California Mining Stock Certificates** 1898-1910 1) Shenandoah Mining & Development Company. Oakland dateline. Issued in 1898 for 79 shares to the company's secretary. Also signed by the company president. Not cancelled. 2) Richland Gold Mining Company. Issued in 1908 for 50,000 shares!

Pen cancelled. Three mining vignettes and gilt border: 3) The Jumper Californian Gold Mines Company. Issued 1910 for 5 shares. **Est. \$120 ~ \$200 HWAC# 42137**

**Lot # 1482 California, Three California Mining Stock Certificates** 2 1) The Hammond Gold Mining Company. Inc. in NH. Unissued but signed by the treasurer. c.1880s. Illustrated with mining vignette. Toning. 2) Magalia Channel Mines Company. Chico, Butte County. Low No. 5, issued in 1922. Not cancelled. Mining vignette. Toning, some tears. 3) Feather River Cons. Mining Company. Issued in 1903 for 100 shares. Three mining vignettes. Folds, toning, tape repairs. **Est. \$60 ~ \$90 HWAC# 42179**

[See Photo Online](#)

[See Photo Online](#)

**Lot # 1483 California, Three Different California Mining Stock Certificates** 1887-1934 Lot of 3. Included: Carson Hill Gold Mining Corp. (1934, mining vignette,

punch cancelled), Montrose Mining Company (1887, not cancelled, nice mining vignette), and Karma Mining Company (1901, not cancelled, multiple mining vignettes). **Est. \$60 ~ \$90 HWAC# 42178**



the highest bidder, netting more than \$300,000 and restoring Pierce Butler to his accustomed affluence. It appears that Pierce put one sixth of his proceeds \$50,000 from the sale of his slaves as the first investor (Certificate #1) in the Philadelphia Silver & Copper Mining Company.

**Lot # 1484 California, Three Rare California Mining Stock Certificates** 1897-1899 1) Good Hope Mining Co. No. 339, issued for 25,600 shares to the company president E.A. Freeman on Nov. 17th, 1897. Not cancelled. Deep horizontal fold and rough lower edge. 6.75" x 9.5" 2) Mars Gold & Silver Mining Co. No. 28, issued for 100 shares to SN Howland on Jan. 7th, 1898. Not cancelled. Printed by Le Count Bros., SF. Folds, rough left edge, and toning. 5" x 10" 3) Bankers Mining Syndicate of San Francisco. No 385, issued for 11,000 shares to the company president on Oct. 16th, 1899. Not cancelled. Vignette of river and mountains. Printed by American Lith Co., SF. 5" x 9.25" Rolled corner, folds, and toning. (Prag Collection)



**Est. \$100 ~ \$200 HWAC# 34909**

The company mining properties were centered around the Colorado River including silver mines in El Dorado Canyon in the Colorado Mining District of what was then Arizona Territory and after 1869 Lincoln County, Nevada; and a copper mine in the Freeman Mining District in San Bernardino County, California across the river from Aubrey Landing. A Rare vignette of a map of the company's mining claims show location and names the various mines. Signed by secretary August and president Thomas Tilden. Incorporated April 8, 1864 and capitalized at \$1,000,000; 20,000 shares at \$50 per. Others vignettes include Vertical mine shaft, left. Indian warrior, right. Allegorical California, bottom. The company was formed by eastern financiers including Thomas Tilden, Adolph Hugel, John Potter, William Reich, Alphonso F. Tilden, and Robert Smith. [Reference: Malcolm Bell Jr., Major Butler's Legacy: Five Generations of a Slaveholding Family (Athens: University of Georgia Press, 1987). See also "Laws of the General Assembly of the Commonwealth of Pennsylvania Passed at the Session of 1864", Act 237]. (Smy 10-31-07-2122 P1380) **Est. \$1,000 ~ \$2,000 HWAC# 41374**

[See Photo Online](#)

**Lot # 1485 California, Two California Mercury Mining Stock Certificates** 1916 & 1953 Two different. 1) St. John's Consolidated

Quicksilver Mining Company. No. 531, issued for 15,000 shares (!) to Crocker National Bank on March 11th, 1916. Signed by the president and secretary. Not cancelled. Gold seal and allegorical vignette. Folds, some toning on left edge. 2) New Idria Mining and Chemical Company. No 9460, issued for 100 shares in 1953. Punch cancelled. Eagle vignette. **Est. \$60 ~ \$90 HWAC# 41162**



**Lot # 1486 California, Two Hydraulic Mining Photographs** One shows the aftermath of the hydrolic hose on a mountain. It is amazing the devastation it cause. Excellent contrast. Photo size is 5 x 7". **Est. \$120 ~ \$200 HWAC# 42860**

Quicksilver Mining Company. No. 531, issued for 15,000 shares (!) to Crocker National Bank on March 11th, 1916. Signed by the president and secretary. Not cancelled. Gold seal and allegorical vignette. Folds, some toning on left edge. 2) New Idria Mining and Chemical Company. No 9460, issued for 100 shares in 1953. Punch cancelled. Eagle vignette. **Est. \$60 ~ \$90 HWAC# 41162**



**Lot # 1488** Colorado, Aspen **Atlas to Accompany Monograph XXXI on the Geology of the Aspen District Colorado (1898)** United States Geological Survey/ Charles D. Walcott, Director/ Josiah Edward Spurr/ Samuel Franklin Emmons, Geologist in Charge/ Washington 1898/ Julius Bien & C0. Lith. NY. Consists of 30 printed sheets, 27 of which are full-page color maps. Maps detail areas of topography and geology; including Aspen, Tourtelotte, Hunter Park, and Smuggler Mountain. Includes the "Aspen Special" sheet that details the town, its streets and nearby mines. Large folio 21-3/8" by 18-5/8". Original brown buckram with gilt title on front, very fine. **Est. \$150 ~ \$800 HWAC# 21657**

**Lot # 1487 California / Nevada, Extremely Rare and Early Stock Issue # 1 for the Philadelphia Silver & Copper Mining Company** 1864 Stock certificate # 1 issued to Pierce Butler in 1864. Butler was the grandson of one of the wealthiest slave owning families in the South. After marrying a well-known English actress Fanny Kemble, his wife became disgusted with slavery later writing a book. Pierce, by 1859 had made such a wreck of his finances that he decided to sell off some of his "property." On March 2 and 3, 1859, the largest sale of human beings in the history of the United States took place on a rainy racetrack in Savannah. Capturing the event for the New York Tribune, Mortimer Thomson, writing under the pen name Q. K. Philander Doesticks, noted, "On the faces of all [the slaves] was an expression of heavy grief; some appeared to be resigned . . . some sat brooding moodily over their sorrows, . . . their bodies rocking to and fro with a restless motion that was never stilled." When the sale was complete, 429 men, women, and children had been auctioned to

**Lot # 1489 Colorado, Boulder Boulder Mining Booklet** 1915 Mining in Boulder County Colorado, issued by The Boulder County Metal Mining Association, 1915. **Est. \$20 ~ \$100 HWAC# 41411**

[See Photo Online](#)



**Lot # 1490** Colorado, Central City **The Bald Mountain Nevada Mining Company Stock Certificate** 1897 Extra-rare. The name could point you in many different directions (as there is a Bald Mountain Mine in White Pine County, Nevada), but this was a Central City, Colorado mining operation. Nevadaville, located above Central City, was

first named Nevada. A post office was established there in 1861. In 1869, the government changed the name to Bald Mountain, but local residents continued to use the old name Nevada, and commonly the two names would be combined - Nevada Bald Mountain - when referring to this area of the district. Certificate No. 41. Inc. under the laws of Colorado. Issued for 1 share to John P. Gillis on Oct. 17th, 1897. Signed by president and secretary. Not cancelled. Gold seal, black border and underground mining vignette. Folds, otherwise clean. 8.5" x 11.75" **Est. \$100 ~ \$150 HWAC# 41158**

[See Photo Online](#)

**Lot # 1491** Colorado, Clear Creek **Territorial Clear Creek Mining Survey Map** 1873 Survey No. 380 Mineral District No. 2 Plat of the Severance and Harvey Claim upon the Coral Lode in the Argentine Mining District, Clear Creek County Colorado. Dated October 30th, 1873. Surveyed by George F. Marsh, U.S. Dep. Surveyor, signed by U.S. Surveyor General of Colorado M. Lessig. 15 x 20", folded. **Est. \$20 ~ \$60 HWAC# 37932**



**Lot # 1492** Colorado, Clear Creek **Pre-emption of Claim No. Eight MGreen By Lode** 1864 The certificate was filed by Hazeu Cheney (1808-1877) on Dec. 3, 1864 for pre-emption of claim no. 8 from the Discovery Claim on the Green By Lode for mining purposes in the Territory

of Colorado. Recorded by P. E. Chanuaud, and Davis, Deputy. The property was owned by Beloit College in Wisconsin, 1850-51. **Est. \$100 ~ \$200 HWAC# 26509**

[See Photo Online](#)

**Lot # 1493** Colorado, Clear Creek **The Federal Union Gold Mining Company By-Laws** 1866 By-laws of the Federal Union Mining Company, Clear Creek County, Colorado, organized March 27, 1866. Capital stock \$1000,000. Franklin Job Printing, Greenfield, 1866. Stitched in original printed deep blue wrappers, with wrapper title, 'The Federal Union Gold Mining Company,' lettered in gilt. (6.25" x 4.25") 11 pp. Near Fine. **Est. \$80 ~ \$300 HWAC# 27044**



**Lot # 1494** Colorado, Clear Creek & Gilpin Counties **Colorado Mining Stock Certificate Pair: Gilpin & Clear Creek** 1867 & 1880 1) Early 1867 certificate for the Reliance Gold & Silver Mining Co. of Colorado. Inc. in New York. Mines at Black Hawk, Gilpin County. No. 150 issued for 5 shares to John B. Bacon on July 19th, 1867. Signed by F.E. Tucker (president) and the secretary. Not cancelled. Fabulous mining vignette with winch and underground scene at left. Stains

and wear from being folded. 9" x 12.5" 2) Buckeye Mining & Tunneling Co. of Colorado. No. 5773, issued for 100 shares March 5, 1880. Signed by the president (Cassidy) and secretary (White). Not cancelled. Pink border, green background and mining vignette. 5" x 9.5" (Prag Collection) **Est. \$180 ~ \$250 HWAC# 34857**

**Lot # 1495** Colorado, Clear Creek & Gilpin Counties **Mining Claims Map for Pennsylvania Mining Power & Reduction Co. (Colorado)** c1910 Map of patented mining claims located in Clear Creek and Gilpin Counties, incorporated November 17, 1910. Lower area titled "Section showing Elevations along line of Pennsylvania Tunnel," with Chase & Rank M. E. April 1897 printed at lower left. "Gilpin County Gold Belt" printed in the right margin. Corporation owned primarily by Leopold Sternberger and estate of Leopold Sternberger. Property lies between Fall River and Central City, and includes the Lotus and Pennsylvania group of mines. None of the mines were producers except the Lotus group, which did ship some ore until closed by water (Mines Register: Successor to the Mines Handbook...1914, p. 710). U.S. Bureau of Mines, Denver, Colorado, date microfilmed Feb. 10, 1976 stamped on reverse. Red and pink highlights, along with red circles and handwritten notes added later. Lateral tear near middle repaired with tape on reverse with part of left margin missing and several tears around the edges. **Est. \$50 ~ \$200 HWAC# 21621**

[See Photo Online](#)



**Lot # 1496** Colorado, Clear Creek and Gilpin Counties **Mining Map of Lower Clear Creek and Gilpin Counties** c1910 Large 40 x 36" map by James Underhill for the Big Five Mining Co. Scale" 1 mile is about 5.5". Shows surveyed mining claims, with the Big 5 Company's claims colored in red. More than twenty different mining districts are shown on the map. Brittle, thin paper. Torn and repaired,

chipped top edge. **Est. \$80 ~ \$400 HWAC# 23740**

**Lot # 1497** Colorado, Colorado Springs **Official Summary of Certified Reports of Listed Companies (Cripple Creek Mining Reference)** 1909 Certified by the Cripple Creek Mining Stock Association. History from 1891 to 1909. Includes a brief summary of all mining companies. GREAT resource. **Est. \$200 ~ \$600 HWAC# 26433**



**Lot # 1498** Colorado, Cripple Creek **Cripple Creek District Title Map** c1901 Cripple Creek District: Legend, Title Map, Showing Deviation of Title of Golden Cycle Mining Company (highlighted in red), Theresa Gold mining Company (highlighted in red), and F.G. Logan Tract (highlighted in gold). Davis & Byler Mining Engineers, Victor, Colorado printed on lower left. The engineering firm, located in Victor, was likely in the Victor Hotel, considered "the most modern edifice in the Cripple Creek District." Additional titles shown include the Keystone M. & M. Co., the Longfellow



G. M. Co., the Vindicator Cons. G. M. Co., and Christmas G. M. Co. The district is on the SW flank of Pikes Peak, with gold discovered in 1890. By 1900 nearly 500 mines had been discovered, the towns of Cripple Creek and Victor had been established, and rail service connected the district to the outside world (mininghistoryassociation.org). Coated paper on linen, measures 35 1/2" x 43 1/4". Water stains and several tears repaired by tape on lower left and center. "Cycle Surface" and "Cycle territory" handwritten in pencil on reverse. **Est. \$200 ~ \$500 HWAC# 21620**

**See Photo Online**

**Lot # 1499** Colorado, Cripple Creek **Cripple Creek Mining Prospectus and Rock Catalog 1900-1918** 1) Prospectus for the Omaha and Cripple Creek Mining and Leasing Company. The company plans to "go right into the heart of this Gold Belt [in Cripple Creek], among the richest mines, and by leasing ground, that it could not possibly afford to buy, it will possess all the advantages of the richest companies in the District (except ownership)." They have already leased ground on Bull Hill adjacent to the Delmonico Mine, A shaft has been sunk. c.1900. Four pages on blue cardstock. Folds and pinholes. 7" x 6" 2) Catalog No. 35. Descriptive Catalog of a Petrographic Collection of Rocks from Cripple Creek, Colorado. By Harold L. Alling. Published by Ward's Natural Science Establishment. Softcover. 24 pages with a few photographs. 1918. These specimens were collected on a trip by Professor P.G. Worcester of the University of Colorado in 1918. "We offer this catalog in the hope that it may be of practical aid to all who wish to study the rather remarkable series of rocks in this great gold camp." Writing on the inside and some stains. 9" x 6" **Est. \$50 ~ \$150 HWAC# 27179**

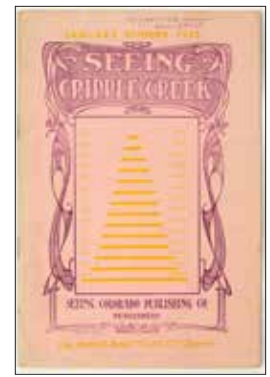


**Lot # 1500** Colorado, Cripple Creek **Seeing Cripple Creek (June 1903)** Issued by Seeing Colorado Publishing Co. A monthly publication with articles and advertisements. (10.25" x 6.75") From 1903 issue: "It seemed, a few months ago, as if the Colorado Pandora had opened her box and all its treasures had flown from it, leaving only one little lump of earth dotted with shining particles. This was Colorado's Hope, and its presence has caused a whole state to buckle and girth herself anew for a life struggle. To the Cripple Creek gold fields all eyes in the state are now turned for prosperity...." Used condition. **Est. \$150 ~ \$200 HWAC# 41400**

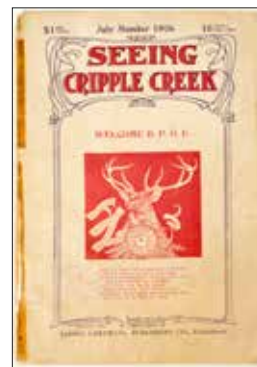
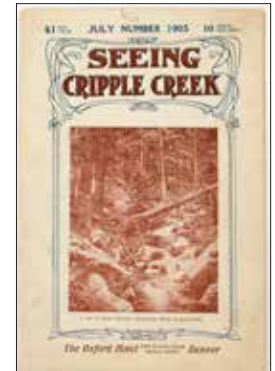
**Lot # 1501** Colorado, Cripple Creek **Seeing Cripple Creek (April 1904)** Issued by Seeing Colorado Publishing Co. A monthly publication with articles and advertisements. (10.25" x 6.75") Used condition. Last month's happenings at The Moon Anchor, Beacon Claim, Modoc Mining, The Sunshine, The Findlay, etc. Great mining cabin photograph among many other photographs. Article on the Great Exploration Tunnel. Fabulous resource. **Est. \$150 ~ \$200 HWAC# 41401**



**Lot # 1502** Colorado, Cripple Creek **Seeing Cripple Creek (January 1905)** Issued by Seeing Colorado Publishing Co. A monthly publication with articles and advertisements. "Unconquerable Cripple Creek" "JM Wright and the Great Joe Dandy Mine in Bull Hill." "Woodman & Kilpatrick, insurance." "WH Wilson and the Upper Theresa Mine." "WR Foley and the Index Mining and Milling Company." Etc. 51 pages. 33 pictures - many of them are portraits. Includes personal notes from an owner like "a great producer of low grade ore." Great resource material here. 51 pages. About 30 pictures. (10.25" x 6.75") Used condition. **Est. \$150 ~ \$200 HWAC# 41402**



**Lot # 1503** Colorado, Cripple Creek **Seeing Cripple Creek (July 1905)** Includes articles on safety in Cripple Creek mining, Crescent Cattle Company, water works, bullion valuation from the last half year; a fabulous photograph (one of many) of miners working on a stope, and my personal favorite "Fortunes Made in Cripple Creek in a Year." Issued by Seeing Colorado Publishing Co. 51 pages. 35 pictures. A monthly publication with articles and advertisements. (10.25" x 6.75") **Est. \$150 ~ \$200 HWAC# 41403**



**Lot # 1504** Colorado, Cripple Creek **Seeing Cripple Creek (July 1906)** Articles on Cripple Creek in the summer, the arrival of the Elks with portraits of the main players, mining near Breckenridge, Thomas Walsh, prospector, etc. Lots of photographs. Great historical reference. Issued by Seeing Colorado Publishing Co. A monthly publication with articles and advertisements. (10.25" x 6.75") 51 pages. 48 photographs. **Est. \$150 ~ \$200 HWAC# 41404**

**Lot # 1505** Colorado, Cripple Creek **Two Souvenir Booklets on Cripple Creek** 1) "The World's Famous Gold Camp, Victor, Cripple Creek." Published by The Railroad View Publishing Co., Colorado Springs, Colorado, copyrighted, 1903. A photo album style booklet with printed photos glued in, captions written on photos.



Center photo is two page color of the Portland Gold Mining Company. Dark red soft cover, with photo of miners glued on front. Bound as a photo album. (7" x 9.25") 19 pp. Good condition. 2) "Souvenir of Cripple Creek District". Published by the Merchants Publishing Co., Denver, Co. for W. D. Armstrong, Stationer, Cripple Creek, Colo. Small pamphlet glued onto inside back cover: "History of Midland terminal and the Early Days of Cripple Creek. A Story More Interesting than Postcards or Folders Can Describe". Pale blue (faded) cover with gold raised lettering, bound as a photo album. (5.5" x 8") 40 pp. Water damage and red stains. Binding loose. **Est. \$100 ~ \$400 HWAC# 39032**

## MINING EPHEMERA

**Lot # 1506** Colorado, Denver **"The Only Daily Mining Newspaper in the World" (booklet)** 1904 "Without apology, but with obvious purpose, this booklet is dedicated to the advertising public..." If you were not sure whether to advertise with the "Daily Mining Record" this booklet will convince you that you should. Testimonial after testimonial from satisfied advertisers fill this 102 page

[See Photo Online](#)

booklet. Railroads, mining companies, brokers, mining supply companies from all over the US. A smorgasbord of mining in 1904. Some photographs. 6 x 9". Softcover, missing string binding. **Est. \$50 ~ \$300** HWAC# 39030

**Lot # 1507** Colorado, Denver **Hendrie & Bolthoff Mfg. and Supply Co. Catalog No. 48** 1917 "Designers, Manufacturers and Jobbers of Mining, Milling, Machine Shop, Steam, Electric, Compressed Air, Hydraulic, and Pumping Machinery, Electrical and General Supplies." Index in front, 992 pages. No book listings found on OCLC. Green cover with gilt lettering, mild to wear to covers. **Est. \$50 ~ \$250** HWAC# 21646

[See Photo Online](#)

**Lot # 1508** Colorado, Denver **Hendrie & Bolthoff Mfg. and Supply Co. Electrical Catalog** 1929 Electrical Catalogue No. 100. "Established 1861. Machinery and Equipment of all kinds General, Automotive, Electrical and Radio Supplies." Areas covered include: Index, Useful Information, and Domestic Parcel Post Rates and Information. Filled with tables, photographs, and illustrations. Hardcover, 1029 pages. **Est. \$20 ~ \$200** HWAC# 21641

[See Photo Online](#)

**Lot # 1509** Colorado, Denver **Hendrie & Bolthoff Mfg. and Supply Co. Catalog No. 102** 1931 General Catalog No. 102. "Machinery and Equipment of All Kinds/ General/ Automotive, Electrical, and radio Supplies/ Builders' Hardware." Bowen Publishing Co., Denver, Colo. Index in front, 976 pages, red boards with gilt lettering. Slight wear to covers. **Est. \$20 ~ \$200** HWAC# 21643

[See Photo Online](#)

**Lot # 1510** Colorado, Denver **Hendrie & Bolthoff Mfg. and Supply Co. Catalog No. 150** 1939 Established 1861. Phone Keystone 4111. Office and Salesrooms/ 1601-1639 Seventeenth Street,/ opposite Union Station/ Denver, Colorado. USA. The Bowen Publishing Co., Denver, Co. Includes Index; Telegraphic Codes; and Useful Information covering metric equivalents, weights and measures, and thermometers. Contains many illustrations, photographs, and tables. Blue cover, 959 pages. **Est. \$20 ~ \$200** HWAC# 21640

[See Photo Online](#)

**Lot # 1511** Colorado, Denver **Profit & Loss, Mining Stock Buyers Magazine** 1905 Vol. 1. No. 10. "The Standard American Magazine for Mining Stock Buyers." "An Independent Monthly Magazine Devoted to Mining and Financial Interests." Edited by Harry J. Newton. Published in Denver. Softcover with stapled binding. 7" x 10." 96 pages. Cover has photograph of The Newhouse Tunnel in Clear Creek, Colorado. Featured seven page article on Clear Creek. Also an article on Tonopah (1904), report of "The World of Mining" which lists the "significance of the happenings in the various camps...stated plainly and entertainingly..."

Many detailed advertisements from mining opportunities throughout. Some wear to cover, binding intact, pages slightly toned. **Est. \$80 ~ \$300** HWAC# 26177



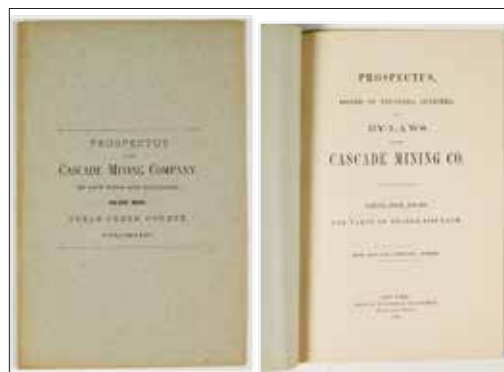
**Lot # 1512** Colorado, Denver **Synopsis of the**

[See Photo Online](#)

**Plan and Objects Relating to the Colorado Mining Land Company** 1875 Pamphlet includes a general history and an elaborate map of the

New State of Colorado. Published by the principal offices, Buffalo, NY and Denver CO. "It (Colorado) possesses all the elements of prosperous agricultural and mineral wealth." U. S. Grant's annual Message, 1873. Cover missing, pages loose, very fragile. (8" x 5.5") 24 pp. **Est. \$20 ~ \$80** HWAC# 26543

**Lot # 1513** Colorado, Georgetown **Prospectus for The Cascade Mining Company of New York & Colorado** 1876 Silver mine located in Clear Creek County near Georgetown.1) 1876 prospectus. 20 pages. Begins with description of Georgetown and the Cascade Claim (discovered in 1868). Vein approx. 20-25 feet in width. Argues for the construction of a mill. Includes selections from the Mining Review and Colorado Miner. Ends with by-laws. Printed by Wynkoop & Hallenbeck, New York. Some toning to cover, pages clean on inside. 9" x 5.75" 2) 17 sheets of unused stock transfer forms c.1870s. **Est. \$220 ~ \$450** HWAC# 34821



**Lot # 1514** Colorado, Georgetown **Prospectus of The Cascade Mining Company of New York and Colorado (Clear Creek County)** 1876 Silver mine near Georgetown. 20 pages. Printed by Press of Wynkoop

& Hallenbeck, New York. Located on the Charter Oak Ridge (five miles up the valley of Chicago Creek). The lode was first discovered in 1868. Interestingly, begins by describing how risky early investment in Colorado mines was. Claims that the lode is "beyond question one of the strongest veins of the state," noting ten tons of ore taken from within five feet of the surface gave returns of from 300-500 ounces of silver to the ton. Includes entries from the Mining Review and the Colorado Miner. Ends with the company by-laws. Light blue covers with some light soiling. 9" x 5.75" **Est. \$300 ~ \$600** HWAC# 34807

**See Photo Online**

**Lot # 1515** Colorado, Idaho Springs **Aksarben Gold Mining Company prospectus** 1896 Only 35 miles from Denver at Idaho Springs in Chaffee County. 8 pages with one full page

in 1880. Signed by the president and secretary. Not cancelled. Vignette of Fryer Hill in Leadville. Folds. 7.25" x 11" (Prag Collection) **Est. \$200 ~ \$250 HWAC# 34868**



photograph, one claim map, and one cross section map. Blue writing on white pages. Short, but colorful! **Est. \$50 ~ \$200 HWAC# 26718**

**Lot # 1516** Colorado, Leadville **Pair of Leadville Mining Stock Certificates**



1882 1) The South Side Milling & Mining Company. Inc. in CO. No. 309, issued for 5,000 shares to Cornwall on Aug. 25, 1882. Signed by the vice president and secretary. Not cancelled. Two vignettes: miner with pick and large surface site. Also gilt facsimile RN and gray border. Folds. 7.5" x 10" 2) The Paris Consolidated Mining Company. Inc. in CO. No. 138, issued for 100 shares on Feb. 20th, 1882. Signed by the president and secretary. Not cancelled. Vignette of train near mountain (top center) and miners working underground (right). Creases. 8.5" x 10.5" (Prag Collection) **Est. \$200 ~ \$250 HWAC# 34862**

**Lot # 1519** Colorado, Leadville **Leadville Mining Prospectuses** c.1880 Lot of 3. 1) The



Colorado Mine Developing Co. Lake County. Inc. in Colorado. President is Hon. Jno. F. Humphreys, the Mayor of Leadville. Company has five

claims, comprising forty-three acres: Red Fox, Grey Fox, Honest John, War Eagle, and Windsor. No date is listed, but we've sold stocks from the company dating to 1880. 4 pages. Claims are on "the east face of Mt. Zion...with many advantages of location, among which are freedom from water (the dread of the prospector), a fair supply of timber, immunity from heavy snows, and unusual facilities for cheap transportation." Printed by Democrat Printing Co., Leadville. 5.5" x 3" Very fine. 2) "The Truth about Leadville, Colorado." A four page brochure, c.1920, advertising the town and mining prospects. "Leadville is a modern city, orderly, law-abiding, healthful." Front features photograph of the town. 3.5" x 6.25" 3) "Leadville Mines Eight Metals. Facts For You." Small booklet advertising the district. Starts with a poem! c.1906. 9 pages. 5.5" x 3.5" **Est. \$200 ~ \$400 HWAC# 27153**



**Lot # 1517** Colorado, Leadville **Atlas to Accompany "A Monograph on the Geology and Mining Industry of Leadville, Colorado"** 1883 Atlas to Accompany A Monograph on the Geology and Mining Industry of Leadville, Colorado, by Sam Emmons, 1883. Julius Bien Lithograph Co., New York. Thirty One maps, 16.5 x 20" tall (folio size). This is arguably the finest Colorado Atlas, it accompanied the USGS Monograph on Leadville. The text volume is seen fairly regularly, but the atlas is extremely rare.

Emmons was one of several young mining geologists, mostly schooled at the Freiberg School of Mines in Germany, appointed by Clarence King when the Congress formed the US Geologic Survey in 1879. Twenty four of the maps show geology and topography of the Leadville area. Seven of the maps are for the area of Colorado surrounding Leadville. One sheet is an index of the shafts. There are two title sheets as originally printed. Sheet 4 is a large topographic map of Central Colorado, that stretches from Colorado Springs at the lower right corner to Denver in the upper right corner. At the lower left is Bowman, Colorado and upper left the Eagle River near Red & White Mountain. (1:250,000, double sheet). The scale of the geology maps is 1" to the half mile.

This atlas is the finest map reference for the Leadville area, showing every point of interest, from shaft locations to cabin sites. This copy has been nicely professionally restored, with tears, chips, etc. repaired. **Est. \$150 ~ \$500 HWAC# 21652**

**Lot # 1518** Colorado, Leadville **Different Pictorial Trio of Leadville Mining Stock Certificates** 1880-1882 Nice trio! 1) The Continental Mining Company. Inc. in CO. No. 237, issued for 50 shares in 1882. Signed by the president and secretary. Not cancelled. Very attractive cert. with patriotic and mining vignettes. 8" x 10" 2) The Carbonate Hill Consolidated Mining Company. Inc. in CO. No. 488, issued for 250 shares to A. Baker in 1881. Signed by the vice president and secretary. Not cancelled. Nice vignette showing eight miners at work. Folds and stain on left edge. 7" x 11.25" 3) The Bald Mountain Mining Company. Inc. in New York. No. 1027, issued for 100 shares to Alfred Peckham

**Lot # 1520** Colorado, Leadville **Leadville Mining Stock Certificate Trio** 1880-1882 1) The Colorado Mine Developing Company. No. 1549, issued for 100 shares to FB Rice on Nov. 4th, 1880. Signed by the president (Humphreys) and secretary (Mathews).



Not cancelled. Very attractive vignette. of surface and underground works. 7" x 9.5" Very fine. 2) The Bald Mountain Mining Company. No. A2729, issued for 100 shares to Peterson on Jan. 25, 1881. Signed by the president and secretary. Not cancelled. Green border and print. Vignette of Fryer Hill. 7.5" x 11" Folds and creases. 3) The South Side Milling & Mining Company. No. 314, issued for 2,000 shares on Aug. 20th, 1882. Signed by the vice president and secretary. Not cancelled. Two mining vignettes. 7.5" x 10" Folds. (Prag Collection) **Est. \$200 ~ \$250 HWAC# 34867**

**Lot # 1521** Colorado, Leadville **Pair of Leadville Mining Stock Certificates** 1881 & 1882 1) The Mishawaka Mining Company. California Mining District. No. 31, issued for 100 shares to Metcalf on Sept. 26, 1881. Signed by the president and secretary. Not cancelled. Gilt border and vignette of mine. Folds and a few stains. 7.25" x 11" 2) The Colorado Consolidated Mining & Tunnel Company. No 5701, issued for 3,000 shares to SP Brown on Feb. 13, 1882. Signed by the president (Wright) and secretary. Not cancelled. Ornate border, green

# MINING EPHEMERA



background and vignette of miners with picks and lamps. Folds. 8" x 10.5" (Prag Collection) **Est. \$200 ~ \$250** HWAC# 34861

**Lot # 1522 Colorado, Leadville Phillips Lode Purchase Certificates**

1886 2 different documents outlining the acquisition of plots of land in the Phillips Lode. One is for an Adverse Plat between the Mammoth Lode and the Phillips Lode and includes a map showing this region. The other one is a U.S. Mining patent much bigger and gives approximately 3.5 pages describing the boundaries of the land being sold. This one also includes a map of the land and surrounding claims. The small one is signed by the Commissioner of General Lands office, while the larger one is signed by President Grover Cleveland. **Est. \$150 ~ \$300** HWAC# 37919



[See Photo Online](#)

**Lot # 1523 Colorado, Leadville The Ore Chutes and Recent Developments of Iron Hill** 1889 Author's edition, "The Geology and Ore Chutes of Iron Hill" by A. a. Blow, M. E., published by News

Printing company, Denver, CO. Original copy, cover has been archivally repaired, rebound for protection in archival cardboard cover (9" x 6") 37 pp., with nice vellum fold-out map. This is a report is from a paper read before the American Institute of Mining Engineers, Colorado Meeting, 1889. Blow writes: Of the seven district mining localities, or groups on mines, the central one, Iron Hill, is the one of greatest importance and interest. It was the scene of the earliest discovery of carbonates, as far back as 1875, and since that time has always maintained its position as a steady and heavy producer of gold, silver and lead-ores...." **Est. \$50 ~ \$200** HWAC# 26553

[See Photo Online](#)

**Lot # 1524 Colorado, Ouray U. S. Geologic Folio of Ouray, Colorado** 1907. Between 1894 and 1945, 227 folio maps were published by the U. S. Geological Society. They are rich detail: both in the description and the maps. **Est. \$70 ~ \$100** HWAC# 41851



**Lot # 1525 Colorado, Ouray Vulcan Gold & Silver Mining Company Stock, Ouray 1880** 1880 Cert. #19, issued to Shala W. Eldridge for 200 shares in 1880. Incorporated in New York. Signed by Lewis Jones as president and Meredith L. Jones as secretary. The

company incorporated in 1879 in New York city. The company owned the Vulcan lode, 300 x 1500 feet; situated on the south slope of Potosi Mountain, 6 1/2 mi. sw of Ouray, Mt. Sneffles district. The lode was patented in 1879; vein a fissure from eight to twelve feet wide, pay

streak 12 inches, containing galena with some brittle and ruby silver in a quartz gangue, milling when sorted on average fifty ounces of silver per ton. The Vulcan lode was developed by one tunnel 100 foot long on the vein and one fifteen-foot crosscut (Corregan and Lingane, 1883). In fine, uncanceled condition. **Est. \$200 ~ \$400** HWAC# 35445

**Lot # 1526 Colorado, Ouray Vulcan Gold and Silver Mining Stock, Ouray- 1880** Cert. #18, issued to Shalor W. Eldridge for 200 shares in 1880. Incorporated in New York. Signed by Lewis Jones as president and Meredith L. Jones as secretary. The company incorporated in 1879 in New York city.

The company owned the Vulcan lode, 300 x 1500 feet; situated on the south slope of Potosi Mountain, 6 1/2 mi. sw of Ouray, Mt. Sneffles district. The lode was patented in 1879; vein a fissure from eight to twelve feet wide, pay streak 12 inches, containing galena with some brittle and ruby silver in a quartz gangue, milling when sorted on average fifty ounces of silver per ton. The Vulcan lode was developed by one tunnel 100 foot long on the vein and one fifteen-foot crosscut (Corregan and Lingane, 1883). In fine, uncanceled condition. **Est. \$200 ~ \$400** HWAC# 41343



**Lot # 1527 Colorado, Rosita Two Rosita Mining Stock Certificates** 1882 & 1884

1) Game Ridge Consolidated Mining Company. Inc. in New York. No. 76, issued for 4,800 shares issued to the Farmer's House & Trust Co. in 1882. Signed by the vice-president and secretary. Not cancelled. Vignette of miner using pneumatic drill. Printed by National Bank Note Co., NY. Creases, light toning. 7" x 10.5" 2) The Chieftain Consolidated Mining Company. Offices in Rosita, CO and Union City, IN. Inc. in CO. No. 193, issued for 300 shares in 1884. Signed by the president and secretary. Not cancelled. Gilt border and golden seal. Vignette of miners with pick and cart. Horizontal fold, otherwise fairly clean. 7.5" x 9.75" (Prag Collection) **Est. \$200 ~ \$250** HWAC# 34966

**Lot # 1528 Colorado, Colorado, It's Gold and Silver Mines, 1st Edition Frank Fossett 1879** 1879 One of the great Colorado reference books. Colorado, It's Gold and Silver Mines, Farms & Stock Ranges, and Health and Pleasure Resorts. Tourist's Guide to the Rocky Mountains, by Frank Fossett. 540 pp. The book includes a panoramic foldout of Quartz Hill & Nevadaville, and three tissue paper foldout maps including Colorado Springs & Manitou, map of Colorado and a map of mining claims at Leadville. The book has damage to the binding (some chipping and separation), bumps to corners and some browning on the pages. Condition would be considered fair to good. Signed on the inside, John N. Goodwin. Original green boards. **Est. \$200 ~ \$300** HWAC# 35414







**Lot # 1529 Colorado, Colorado Mining & History Publications** Lot of 9 including a vintage cookbook. Included: 1932 guide to Canon City; 1905 pamphlet "Pioneer Days in Colorado"; 1978 issue of Mountain Diggings; "Pioneer Days in the Arkansas Valley in Southern Colorado and History of Bent's Fort" by Charles Livingstone Seeley, 1932; A Report on the Resources and

Industrial Development of Colorado, 1893; "The Jimmy Camp Trail" by C.F. Mathews, 1946; "Tabor Luck"; "A Story of Gold Hill Colorado"; "Summit County's High Altitude Cook Book" 1908. **Est. \$80 ~ \$400** HWAC# 37935

**Lot # 1530 Colorado, Colorado Mining Ephemera Lot**

1870's Twenty-one items. Includes an 1875 Colorado Miner letterhead, 1873 Albert Johnson Civil and Mining Engineer from Georgetown letterhead, 1875 taxes for the Cascade Mining Co., 1876 Barton House



billhead, 1872 deposit of credit to J Warren Brown from the First National Bank of Denver, 1883 Republican Mountain Silver Mines information letter, 1872 letter to J Warren Brown about the James Guthrie Lode from the Department of Interior (with cover). Unissued Clear Creek Mining & Improvement Co 18--, unissued Merchants National Bank 187-, two unissued Cascade Mining Company stocks. Also two Colorado Miner subscriptions, Georgetown Loop reproduction photograph, and two 1875 Affidavit of Labor and Improvements. Finally an 1875 edition of the Colorado Miner with a large article on Middle Park. **Est. \$260 ~ \$500** HWAC# 38018



**Lot # 1531 Colorado, Colorado Mining Letters** 1883-1936 Three advertising covers with letters. 1) Stratton Independence of Victor. Strong 1903 strike. 2) Happy Jack Gold & Silver Mining Company. Strong 1890 Ouray strike. 3) Liberty Bell Gold Mining Company of Telluride. 1893 strike. One letter with a double ring Eureka cancel (stamp and much of the cancel have been torn off. Letter is about the status of the George Washington Mine in Eureka. 1880. Letters on letterhead include 1) 1883 United States Land Office in Central City, 2) District Court of La Plate County about the Alma Mater Mine, 3) 1898 mining deed to

Cyrus W Davis and Henry M Soule. San Juan County. 4) 1936 Denver Mining Record with volume on Cripple Creek. 5) Lucius D Turner "The location of these claims are in Bridal Vail Basin, San Miguel County..." 6) Leviathan Mining Company informational letter in 1901, St. Louis Puritan Mining & Milling Company letter of information. **Est. \$240 ~ \$500** HWAC# 38030

**Lot # 1532 Colorado, Colorado Mining Map Reprints** Three maps: Routes to the Pikes Peak Gold Regions; Routes To Colorado City; Sketch of the Quartz Mining Region of the Rocky Mountains. Believed to be reprints. **Est. \$20 ~ \$60** HWAC# 37924

[See Photo Online](#)



**Lot # 1533 Colorado, Colorado Mining Stereoviews** Lot of eighteen. Three color: Cripple Creek bird's eye view, Snow Peak, Horseshoe from West Ouray. Black and white include: Early bird's Eye from Cripple Creek, Silver Plume overview, burro train near Ouray, two Aspen overviews, Georgetown railroad loop, Leadville overview, Telluride overview, WH Jackson overview of Leadville, fading inside of a tunnel, inside stamp mill, Nightengale Mine, inside Bobtail mine in Black Hawk, and overview of a very large mining operation. Stereoviews from WH Jackson, Gilbert Westgard II, Keystone View Company, BW Kilburn, TE Hinshaw, **Est. \$500 ~ \$1,500** HWAC# 38011

**Lot # 1534 Colorado, Colorado Mining Stock Certificate**

**Pair: Baskin & Fortunatus** 1882 & 1897 1) The Baskin Consolidated Mining & Milling Company. Inc. in CO 1882. Rare as it is issued to the company president (Lyman J. Baskin) for 5,000 shares. Signed by Baskin as president and PLB Coombs as secretary. Not cancelled. Folds and staining. 4.5" x 8.75" 2) The Fortunatus Mining & Milling Company. Inc. in CO 1891. No. 2545 issued for 100 shares to Wardwell Hardware Co. on Dec. 1st, 1897. Signed by the company president and treasurer. Not cancelled. Ornate border. Folds. 6.75" x 11.5" (Prag Collection) **Est. \$200 ~ \$250** HWAC# 34859



**Visit our online catalog at [www.HolabirdAmericana.com](http://www.HolabirdAmericana.com) for high resolution images of ALL LOTS**

## MINING EPHEMERA



**Lot # 1535**  
Colorado,  
**Colorado**  
**Mining Stock**  
**Certificate**  
**Pair:**  
**Buena and**  
**Pittsburgh**  
1882 & 1906

1) Buena Gold Mining Co. of Colorado. No. 4371, issued for 500 shares in 1882. Signed by the president (Hill) and secretary (Eggleston). Not cancelled. Background vignette of mine. 7" x 10.5" Condition issues: hole in center, soiling, fragile. As-is. 2) The Pittsburg Consolidated Mining, Milling & Tunnel Company. Issued for 1,000 shares to JP Mathieu on March 14, 1906. Signed by the president (Laird) and secretary (Neilson). Not cancelled. Nice underground vignette. 8.5" x 12" Folds. (Prag Collection) **Est. \$120 ~ \$200 HWAC# 34872**

**Lot # 1536 Colorado, Colorado**  
**Mining Stock Certificate Pair:**  
**Colorado Springs & Clear**  
**Creek** 1883 & 1889 Both in very good condition.

1) Panama Mining & Reduction Company. Mines located near Clear Creek County. No. 255, issued in 1883 for 775 shares. Signed by the vice-president and secretary. Not cancelled. Printed by Ed. Mendel, Chicago. 5" x 8.5" 2) The Hyland Mining & Milling Company. Colorado Springs. Low No. 5, issued for 3,750 shares to the company president (Nichols). Pen cancelled. Vignette of underground miners. Printed by Collier & Cleveland, Denver. 6.5" x 11" (Prag Collection) **Est. \$200 ~ \$250 HWAC# 34855**



**Lot # 1537**  
Colorado,  
**Colorado**  
**Mining Stock**  
**Certificate**  
**Pair: Ouray**  
**& Gunnison**  
1881 1) The  
Allied Mines.  
Ouray. No 584,

issued for 50 shares to M. Georgii on Jan. 12, 1881. Signed by the vice president and acting secretary. Not cancelled. Green border with vignette of miners working at the surface. ABN. Folds. 7.25" x 11.5" 2) The Crown Mining Company. Gunnison. No. 273, issued for 500 shares to Joseph Clark on Sept. 3, 1881. Signed by the president and secretary. Not cancelled. Pink background. Two vignettes: underground miners and surface workings. Folds with separation and tape repairs. 9.25" x 11.75" (Prag Collection) **Est. \$200 ~ \$250 HWAC# 34860**

**Lot # 1538**  
Colorado, **Colorado**  
**Mining Stock**  
**Certificate Pair:**  
**Rosita & Del Norte**

1876 & 1882 1) San Juan Consolidated Mining Co. Del Norte. No. 197, issued for 100 shares on May 10, 1876. Signed by the president (pen cancelled) and secretary. Stamp cancelled. Allegorical vignette. Printed



by J. McKittrick & Co., St. Louis. 8" x 11" Toning on left edge. 2) Game Ridge Consolidated Mining Co. Inc. in NY. Located in Rosita. No. 228, issued for 200 shares on Nov. 20th, 1882. Signed by the president and secretary. Not cancelled. Vignette of miner using drill. 7" x 10.5" Heavy toning. (Prag Collection) **Est. \$180 ~ \$220 HWAC# 34858**

**Lot # 1539**  
Colorado,  
**Colorado Mining**  
**Stock Certificate**  
**Pair: Unadilla and**  
**Zephyr** 1880 &  
1881 1) Unadilla

Mining Company of Colorado. Clear Creek County. No. 3250, issued for 100 shares in Oct. 1880. Signed by the president (FA White) and secretary. Not cancelled. Gilt underprint. Printed by Cortios, Macy & Co., NY. 6" x 10" Pinholes and folds. 2) Gorgeous certificate for The Zephyr Mining Company. Monarch District. Inc. in New York in 1881. No. 239. Punch cancelled through signatures. Issued for 500 shares to the company vice president on Dec. 23, 1881. Signed by the president and Jas. H. Kidder (secretary). Vignette of two men under a canopy operating a windlass over a mine shaft. Below is ornate seal with eagle. Black border with rust color design underprint. Printer: John S. Hulin, N.Y. Measures approx. 6.75" x 11". Glue residue from where it was pulled out of ledger. Company mines included the Zephyr, Bonnie Bell, and Ben Hill, all located in Taylor Gulch (6 miles NW of Marysville). Veins were 4-8 ft. in width and contained auriferous galena and pyrite [ref: Burchard]. (Prag Collection) **Est. \$200 ~ \$250 HWAC# 34856**



[See Photo Online](#)

**Lot # 1540 Colorado, Consolidated 10**  
**Mile Mining and Reduction Co. Stock**  
1886 Colorado mining stock certificate for the Consolidated 10 Mile Mining and Reduction Company. Pictorial with the image of two girls next to the ocean.

Company stamp embossed in lower left corner. Issued March 17, 1886. Un-cancelled. **Est. \$120 ~ \$150 HWAC# 40445**

**Lot # 1541 Colorado, Economic Map**  
**of Colorado (Hayden, 1877)** Highlights Agricultural Land, Pasture Land, Pine Forest, Pinon Pines and Cedars, Quaking Aspen Grove, Sage and Bad Land, Coal Lands, Gold Districts, Silver Districts, and Above Timber Line areas. Sheet III in Geological and Geographical Atlas of Colorado and Portions of Adjacent Territories by E.V. Hayden, U.S. Geologist in Charge, 1877. Printed by Julius Bien, Lith. Multi-colored, on thin brittle paper with tape repairs, measures 37" x 27 1/4". **Est. \$20 ~ \$100 HWAC# 21617**

[See Photo Online](#)



**Lot # 1542**  
Colorado, **Geologic**  
**Atlas of the**  
**United States**  
**Colorado Folios**  
c1900 Group of 4  
Colorado: 1) Needle  
Mountains, Folio  
131, 1905. Contains  
descriptive text,  
topographic map,  
areal geology map,  
economic geology  
map, structure-

section sheet, and columnar section sheet. Color, minor tears repaired with tape; 2) Pueblo Folio 36, 1897. List of sheets contains descriptions, deformation, topography, artesian water, areal geology, columnar

sections, economic geology, special illustrations, structure sections. Color, tear on cover repaired by tape. 3) Ouray, Folio 153, 1907. Contains descriptive text, topographic map, areal geology map, economic geology map, structure-section sheet, illustration sheet, and columnar section sheet. 4) Anthracite -Crested Butte, Folio, 9, 1894. List of sheets contains descriptions, topography, areal geology, columnar sections, economic geology, structure sections. **Est. \$50 ~ \$300 HWAC# 21654**

**See Photo Online**

**Lot # 1543 Colorado, Mining Catalog & Reference** Lot of 2: Mineralogist's Pocket Reference by The Colorado Assaying Co. and The Precision Factory Ainsworth's Manual, 1920. **Est. \$20 ~**

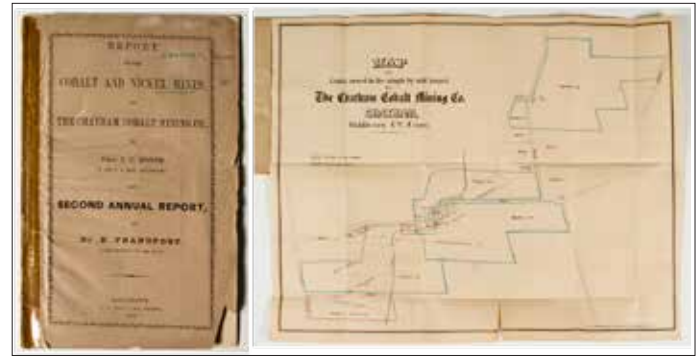
**\$100 HWAC# 37937**

**Lot # 1544 Colorado, Mining Deeds w/ Revenue Stamps** 1) Warranty Deed, 1899, for \$20,000 from George C. Logan to Rocky Mountain Coal Co., County of La Plata, Colorado. 20 adhesive revenue stamps. 2) Indenture made, 1898 from Charles E. Severn to Cyrus W. Davis for one dollar and sufficient consideration for his claim in the Eureka Mining District, San Juan County, Colorado. 3 adhesive revenue stamps. **Est. \$100 ~ \$200 HWAC# 37424**



**Lot # 1545 Colorado, Republican Mountain Silver Mines** 1) List of mining capital stock owners (one is Kit Carson) and some expenses for the Consolidated Republican Mountain Mining Co. 20 Abstract of record and argument in The Supreme Court of the State of Colorado. J. Warren Brown, plaintiff in error vs. The Republican Mountain Silver Mines, defendant in error. 1889. 2 blank receipts from the Consolidated Republican Mountain Mining Co. **Est. \$200 ~ \$400 HWAC# 37425**

**Lot # 1546 Colorado, Two Smaller Colorado Mining Stock Certificates** 1879 & 1891 1) The Colorado Co-Operative Prospecting & Mining Company. Properties in Fremont, Lake, Custer, and San Juan counties. No. 1563, issued for 5 shares in 1879. Corp. signatures very faded. Vignette of state seal. Not cancelled. Small design, almost to look like currency. 3" x 7" Poor condition: heavy soiling. 2) The Gold Rock Mining & Milling Company. Mine in Gilpin County. No. 4270, issued for 500 shares in 1891. Not cancelled. Small vignette of miners. Also smaller sized (3.5" x 9"). Chip to upper left corner, light toning, and fold on right side. (Prag Collection) **Est. \$100 ~ \$150 HWAC# 34965**



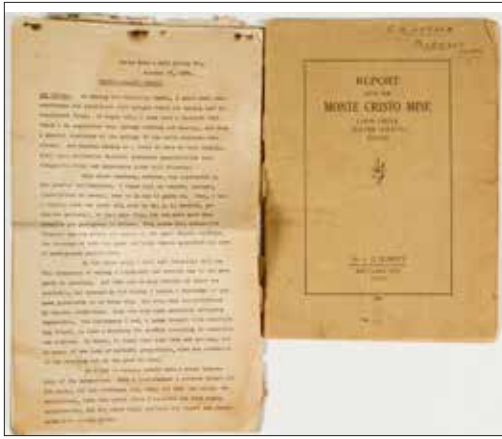
**Lot # 1547 Connecticut, Chatham Report of The Chatham Cobalt Mining Co. (J.C. Booth and Dr. E. Francfort) (Cobalt & Nickel) w/ folding map** 1855 22 pages. Printed by W.D. Starr & Son, Middletown. Very nice color map (17.5" x 21.5") of the property at the front of the report (Lith. by Robertson & Seibert, NY). Ore is "Aresnickel and Cobalt ore, of a silver white color, disseminated everywhere through the gangue in visible grains, sheets and larger nests." J.C. Booth (of the Philadelphia U.S. Mint) ends his report with the prediction: "I fully believe that the mines...will exercise a powerful influence on the market for the metals Cobalt and Nickel." Francfort (the superintendent) recommends more "stopping ground" be opened, the construction of a dam (and a way to heat the building in the winter), a lodging house for the miners, as well as more stamps. Rips and tape repairs to cover. Folds and light toning to pages. 9" x 5.5" **Est. \$400 ~ \$800 HWAC# 34806**

**Lot # 1548 Idaho, Alturas 1883 Alturas Mining Reporter** A 56 Page book and original cover in good condition titled "The Alturas Mining Reporter and Key to the Mammoth Cabinet of Ores" by JM Rice and JB Foster. Published by Herald Printing and Electrotyping House Omaha 1883. The book covers various mines and mining information Near Alturas. May be the only copy in existence today. Gives a directory of Bullion, Hailey, Bellevue, and a listing of with locations of 104 Mines then operating in or around the Wood River Valley. Also contains chapters on the Sawtooth Co, Shoshone Falls, the Western Alturas Mining Area around Rocky Bar and Atlanta and the Guyer Hot Springs. Great piece. **Est. \$300 ~ \$500 HWAC# 38769**



**Lot # 1549 Idaho, Alturas County Two Early Idaho Illustrations: Mines & Birds-Eye View** Both sheets frameable. 1) Split view showing the Bullion Mine (Alturas County, Idaho) and the May Flower Mine (Bullion, Idaho). Possibly out of a book, though no page number or title. Both views show horse-drawn ore carriages and mines on hillsides. 10.25" x 13.5" with some toning and soiling, chips along edges. 2) Birds-Eye View of Hailey (Wood River Valley, Alturas County, Idaho). Lith by Elliott, SF. Four inset views: hotel, school house, court house, and Bullion Block. Tears along three edges, paper toned and slightly brittle. 9" x 12" **Est. \$200 ~ \$300 HWAC# 34939**

# MINING EPHEMERA



**Lot # 1550 Idaho, Custer County Two Reports for the Monte Cristo Mine 1920-1930** Two later reports for the Monte Cristo Mine, a gold mine located at Loon Creek, Sea Foam Mining District, Custer County, Idaho. 1) Report by A.G. Burritt, Mining & Petroleum Geologist, Salt Lake

City. 18 pages Multiple illustrations and black-and-white photographs. No date printed, but pen writing on inside cover indicates 1927. Cover nearly detached. Rough condition. 2) Reconnaissance Report dated 1930. Written by John Walker, Civil Engineer. References Burritt's report (and says it is c.1920) and says Burritt was mostly descriptive and geological in nature given that cave-ins had prevented Burritt from exploring underground. 16 pages. Very poor condition (rips, soiling, burn marks?). **Est. \$200 ~ \$500 HWAC# 34820**

**Lot # 1551 Idaho, Silver City Poorman Gold Mines Billings and a Mining Stock 1-10** Ten receipts for billing payments from the Poorman Gold Mines of Silver City Idaho. 11) Cupric Mines. Unissued stock. # A28. c1900's. **Est. \$50 ~ \$100 HWAC# 41244**

**See Photo Online**



**Lot # 1552 Idaho, Silver City Two Rare Silver City Mining Wells Fargo Revenue Checks 1872** Two rare Owyhee Mining Company (Wells, Fargo & Co.) checks issued 1872 in Silver City, Idaho. Both have RN-C revenue imprints. Cut cancels. One is issued to the mine superintendent, W.D.

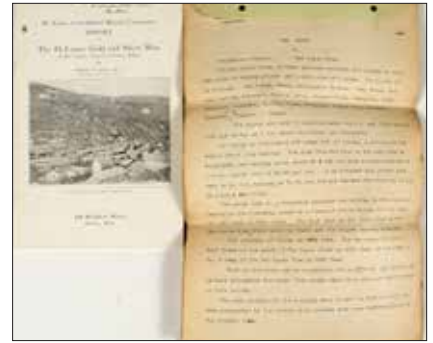
Wallridge. These are highly sought-after Wells Fargo checks. (Prag Collection) **Est. \$150 ~ \$250 HWAC# 41261**

**Lot # 1553 Idaho, Idaho Mine Photograph Collection from Paul Kerr of Columbia University** 1939 Group of about twenty photographs from various



locations in Idaho. Includes Ima Mine and Murray Idaho. Photos taken in 1939 by Professor Paul Kerr of Columbia University. (See lot titled 'Kern County Tungsten Mine Photographs' (ID 37642) for a short note on Professor Kerr.) **Est. \$200 ~ \$300 HWAC# 37651**

**Lot # 1554 Idaho, Two Idaho Mining Reports 1921** 1) De Lamar Gold & Silver Mine. 15 page report by Robert N. Bell, State Inspector of Mines in Idaho. Mine located on Jordan Creek seven miles west of Silver City, Idaho. Deposits are closely related in age, type and general characteristics with Cripple Creek, Goldfield, Tonopah, and the Comstock. Goes through three ore prospects in detail. Two-page spread map of the mining claims. 9" x 6" with light wear and previous owner's name on cover. 2) War Dance Mines. 11 page report by FC Mandell. Nineteen claims located near Hailey. Silver-lead. No date, though letterhead is 190-. This copy could be a draft as there are many copy-edits throughout. 12" x 8.5" with heavy toning. **Est. \$160 ~ \$300 HWAC# 34827**



**Lot # 1555 Idaho, Two Volumes of Mining in Idaho** 1) "The Mining Districts of the Idaho Basin and the Boise Ridge, Idaho", by Waldemar Lindgren with a "Report on the Fossil Plants of the Payette Formation", by Frank Hall Knowlton. Maps and illustrations. 2) "The Gold and Silver Veins of Silver City, De Lamar

and Other Mining Districts in Idaho", by Waldemar Lindgren. Many maps and illustrations. Both volumes are 11.25" x 7.75". Both without covers. **Est. \$100 ~ \$200 HWAC# 39676**



**Lot # 1556 Illinois, Chicago Chicago National Mines Company Archive** c1902 Archive of material from Eliza R. Sutton. 1) 26 x 12" broadside with plenty of photographs and maps. 2) 31.5 x 11" broadside promoting Beaumont Oil. 3-5) Three stock certificates issued to Eliza Sutton. 6-14) Letters on Letterhead. 15) 1902 Filed Notes on letter size paper. 16) Four page 1902 annual report. 17-22) Receipts to said Eliza Sutton. 23-36) Covers addressed to Eliza Sutton. All with contents! 37-46) Cancelled covers with no content 47) Commission Rate letter size broadside. Etc. **Est. \$400 ~ \$800 HWAC# 37536**



**Lot # 1557 Maine, Bangor By-Laws & List of Officers of the Oshkosh Cons. Mining Company**  
 c.1880 12 pages. Offices at Bangor, Penobscot County, Maine. Organized in Maine. No date. Printed by Commercial Print, Bangor. As these are by-laws, there is no discussion of the actual mining property or location. On the first page,

someone crossed out the "Oshkosh Consolidated" and wrote "Great Eastern Silver." Both look like they were incorporated in 1880. Silver mine in Maine? There was also an Oshkosh mine in Colorado. Blue covers with soiling, toning to pages. Stapled binding. 5.75" x 3.5" **Est. \$200 ~ \$400 HWAC# 34819**



**Lot # 1558 Maine, Maine Mining Letters, Covers and Reports**  
 Reports from: 2 reports from Tapley Copper Mine, 1880; 3 reports from Manhattan-Tapley Copper Mines, 1883; Small drawings of Tapley and Manhattan mines; Letter from L. Taylor, manager of the Portland Smelting Works with advertising cover, 1883; and 2 more letters from Taylor. **Est. \$500 ~ \$1,000 HWAC# 37421**

**Lot # 1559 Maryland, Allegany County 1838 Report of the Maryland Mining Co. (by Benjamin Silliman) (Coal)**  
 Very early mining report by a very famous mining geologist! This was right around the beginning of the Georgia/ North Carolina Gold Rush. 27 pages. Coal mine located near Frostburgh, Allegany County, Maryland. Printed by Scatcherd & Adams, New York. Silliman notes that "the geological structure of this coal field is very simple and intelligible" and yet "the coal of the Frostburgh region is of a peculiar character, peculiar at least among American coals" given that it is "the connecting link between the bituminous coals and the anthracite." Benjamin Silliman is considered to be one of the first American professors of science (at Yale), as well as the first person to distill petroleum and founder of the American Journal of Science. Wear and repairs to covers. Some soiling to pages. 9" x 6" **Est. \$300 ~ \$500 HWAC# 34804**



**Lot # 1560 Michigan, Michigan Area Mining Stock Certificates**  
 1899-1964 Lot of 5 different. Included: Adventure Consolidated Copper Company (1899, stamp and punch cancelled), Ahmeck Mining Co. of Michigan (1923, stamp and punch cxl, beaver vignette), Lake Superior Iron & Chemical Co. (1907, pen cxl, Lake Superior vignette), St. Lawrence Mining Corp. (1920, not cxl), and Copper Range Co. (1964, punch cxl). **Est. \$60 ~ \$100 HWAC# 41138**

**See Photo Online**

**See Photo Online**

**Lot # 1561 Michigan, Michigan Mining Ephemera** Four Michigan mining paper pieces. One check from the office of the Quincy Mining Company on Lake superior. Pictorial check. Another pictorial check for the Pennsylvania mine in red ink. Also includes two stock certificates for the Calamut and Montana Mining company. One is orange and pictorial circa 1906. The other is quite plain and done in puce ink circa 1919. **Est. \$100 ~ \$120 HWAC# 40446**

**Lot # 1562 Minnesota, Minnesota Gold Mining Company Stock certificate** for the Minnesota gold mining company. It's a pictorial stock with a prospector and dog in upper left corner, and miners in the forest in the center. Embossed stamp in lower left corner. \$.25 revenue stamp in lower right. Dated March 19, 1866. **Est. \$200 ~ \$400 HWAC# 40443**



**Lot # 1563 Montana, Butte Framed William A. Clark Autographs on Mining Stocks** c1880 Three different Moulton Mining Co. stock certificates, two signed by famous copper magnate W. A. Clark. Blue, green, black. Clark was instrumental in the development of mining at Butte. His fortune has been passed along in many ways, including the Clark art museum in New York, the Clark Library at UCLA and Clark County, Nevada (Las Vegas) bears his name. Once one of the 50 richest men in America, Clark's career was seeped in scandal. Sam Clemens considered him a crook. **Est. \$200 ~ \$500 HWAC# 25177**

**Lot # 1564 Montana, Marysville Marysville, Montana Mining Check Collection (Ghost Town)** 1886 Lot of 21 checks from The Montana Company, Limited, in Marysville, Montana, issued in 1886. 3.75" x 8.5" with varying levels of soiling. Marysville was at one time the largest producer of gold in Montana. The original claim which became the district's most successful mine, the Drumlummon, was discovered in 1876 by Thomas Cruse. Cruse named the mine after his Irish homeland. He got help to develop the vein and news spread quickly of the richness of the find. A London based company bought

**See Photo Online**

## MINING EPHEMERA

the Drumlummon from Cruse in 1882 and formed The Montana Company, Limited. Cruse had success in banking and eventually reinvest in Marysville mining. At one time, the town boasted as many as 4,000 residents. Legend has it that Cruse named it Marysville because of the first female resident, Mary Ralston. **Est. \$25 ~ \$50** HWAC# 36652

See Photo Online

**Lot # 1565 Montana, Four Montana Mining Stock Certificates** Lot of 4 different. Includes: North Butte Mining Company (1909, mining vignette, cancelled); Jardine Mining Company (1922, cancelled); Parrot Silver & Copper Company (1909, cancelled); and Middle Fork Mining Company (unissued, c.1880s). **Est. \$40 ~ \$60** HWAC# 42121



**Lot # 1566 Montana, Preliminary Report of the United States Geological Survey of Montana and Portions of Adjacent Territories** 1872 By FV Hayden, Washington. 538 pages of text with it including index. Includes for numerous foldout maps (5) and illustrations (64) throughout. Tight binding in contents. Usual dark brown government boards with weekly struck gilt spine. This is an exceptionally important early work on Montana and adjacent areas published prior to the Little Big Horn and just after the original gold discoveries of the 1860s. This book was in the Yorkshire Philosophical Society Library. **Est. \$500 ~ \$1,000** HWAC# 37638

**Lot # 1567 Montana, Upper Missouri Mining and Prospecting Co. Stock Certificate** 1866 Stock certificate for the Upper Missouri Mining and Prospecting Company. Pictorial stock with the image of a prospector and a dog in the upper left and miners in the mine in the center. \$.25 revenue stamp, dated May 30, 1866. Beautiful piece. **Est. \$200 ~ \$400** HWAC# 40442

See Photo Online

**Lot # 1568 Nevada, Austin Austin Area Mining Stock Certificates** 1880s-1937 Lot of 4. Included: 1) Hider Nevada Copper Company (Lander County). No. 61, issued for 3,000 shares in 1907. Punch cancelled.

Three mining vignettes. Folds with separation. 2) Nevada Birch Creek Mining Company. No. 1012, issued for 60,000 shares! to the company president, T.H. Dalton in 1925. Not cancelled. Multiple mining vignettes. Folds. 3) Austin Silver Mining Company. No. C9014, issued for 100 shares in 1937. Not cancelled. Miner with drill vignette. Some staining. 4) Sheet of two unissued Reese River Flouring Mill Company stocks circa 1880s. **Est. \$80 ~ \$120** HWAC# 42171

See Photo Online

**Lot # 1569 Nevada, Austin Two Good Austin Mining Checks & a Stock Certificate** 1867-1910 Lot of 3. 1) Two checks: First National Bank of Nevada, 1867, for \$20 in coin, signed by Reese River Cons. Mining Company; and Manhattan Silver Mining Company of Nevada check for \$20,000 in gold issued in 1871 in New York. Both checks have stains. 2) Stock certificate for Austin Manhattan Consolidated Mining Company. No. 10812, issued for 500 shares on Dec. 31st, 1910. Not cancelled. Vignette of mine facility. Printed by Western Bank Note, Chicago. Folds, rough edges. 9.5" x 14" (Prag Collection) **Est. \$100 ~ \$200** HWAC# 34973



**Lot # 1570 Nevada, Belmont Liguria Gold & Silver Mining Company Stock Certificate** 1877 Not seen by us before. Inc. 1876. Location: Spanish Belt Mining District, Nye County, Nevada. The Spanish

Belt District, discovered in 1867, organized in 1875, was later known as the Barcelona District. It was located about 7 miles from Belmont, Nevada (between Belmont and Manhattan). This certificate is No. 184, issued for 25 shares to C. Denervand on April 24th, 1877. Signed by P.A. Giannini as president and the company secretary (illegible). Not cancelled. Simple design printed by Britton & Rey, SF. Folds, edge wear, and some soiling. 4.25" x 9" **Est. \$200 ~ \$400** HWAC# 43034

**Lot # 1571 Nevada, Belmont Quinterro Mining Company Stock Certificate** 1868 Rare, possibly the only known stock certificate for 250 in the Quinterro Mining Company issued April 23, 1868. Located in the Philadelphia District of Belmont, Nevada, Nye County. **Est. \$300 ~ \$600** HWAC# 42256



Visit our online catalog at  
[www.HolabirdAmericana.com](http://www.HolabirdAmericana.com)  
 Zoom in and see detail on  
 high resolution images of  
**ALL LOTS**



**Lot # 1572 Nevada, Bullfrog Five Different Bullfrog, Nevada Mining Stock Certificates 1905-1908**  
 Lot of 5. Included: The Bullfrog Victor Mining Company (1906, not cancelled), The Bullfrog North Star Mining Company (1906, not cancelled), Montgomery Mountain Mining Company of Bullfrog (1905, not cancelled, poor condition), Montgomery Shoshone Consolidated Mining Company (1908, stamp cancelled, mining vignette), and The Yankee Girl Gold Mining Company of Bullfrog (1907, not cancelled, 3 mining vignettes). **Est. \$150 ~ \$250 HWAC# 43011**

**Lot # 1573 Nevada, Bullfrog Four Bullfrog Mining Stock Certificates 1906-1929**  
 Lot of 4. Best is for The Homestake King Consolidated Bullfrog Mining & Milling Co. (No 4817, issued 1909, not cancelled). Also: Gibraltar Mines Syndicate (No. 2039, issued 1906, not cancelled) and a pair of certificates for the Sunset Mining & Development Co. (No. 8443 & 9669, issued 1920 & 1929, not cancelled). Folds and minor soiling on first two. Nice group! (Prag Collection) **Est. \$120 ~ \$200 HWAC# 34903**



**Lot # 1574 Nevada, Bullfrog Three Different Bullfrog Mining Stock Certificates 1906-1908**  
 Nice trio in very good condition. 1) Spearhead Bullfrog Mining Company. Issued 1906 for 1,000 shares. Not cancelled. Allegorical vignette. 2) Bullfrog-Banner Mines Company. Issued 1908 for 1,000 shares. Not

cancelled. 3) Bullfrog-Red Oak Mining Company. Issued 1907 for 500 shares. Not cancelled. Eagle vignette. **Est. \$150 ~ \$250 HWAC# 42132**

**Lot # 1575 Nevada, Bullfrog Three Different Bullfrog Mining Stock Certificates 1906-1909** Three different. 1) The Gold Bar Annex Mining Company. Issued 1906 for 1,000 shares, not cancelled. 2) The Homestake King Consolidated Bullfrog Mining & Milling Company. Issued 1908 for 500 shares, not cancelled. 3) Bullfrog Gold Bar Mining Company. Issued 1909 for 1,000 shares, not cancelled. Nice trio. **Est. \$150 ~ \$250 HWAC# 42150**



**Lot # 1576 Nevada, Bullfrog Two Pioneer District, Nevada Mining Stock Certificates 1908 & 1919** Lot of two. Pioneer District, Nye County (near Bullfrog). 1) Ruby-Pioneer Mines Company. Inc. in Utah. No. 51, issued for 10,000 shares to John Horlick on June 1st, 1908. Signed by C.E. Allen as president and the company secretary. Not cancelled. Simple design with ornate logo. Folds, creases. 8' x 10" 2) The Consolidated Mayflower Mines Company. Inc. in Nevada. No. 1534, issued for 150 shares to Wm. Krasselt on Jan. 24, 1919. Signed by the president and secretary. Not cancelled. Three mining vignettes. 5.5" x 9.75" **Est. \$100 ~ \$150 HWAC# 43031**



[See Photo Online](#)

**Lot # 1577 Nevada, Candelaria, Nevada Mining Stock Certificate Pair 1922 & 1924** Two different. 1) Candelaria Mines Company. Issued in 1922 for 100 shares. Not cancelled. 2) New Candelaria Mines Company. Issued 1924 for 500 shares. Not cancelled. Very attractive certificate with blue border and vignette of mine. **Est. \$60 ~ \$120 HWAC# 42143**

**Lot # 1578 Nevada, Carson City Three Carson City Area Mining Stock Certificates 1906-1909** Three different. Included: United Gold Corporation (1909, not cancelled), The Bullion Hill Mining Company (1906, not cancelled), and The Longfellow Gold Mining and Milling Company (1908, pen cancelled, three mining vignettes). **Est. \$60 ~ \$90 HWAC# 41142**

[See Photo Online](#)

[See Photo Online](#)

**Lot # 1579 Nevada, Churchill County Churchill County Mining Stock Certificate Pair 1900 & 1929** 1) The Eagle Consolidated Gold Mining Company. Inc. in NV. Eagleville, Churchill County. No. 300, issued for 1,000 shares Mary E. Clement on Dec. 19, 1900. Signed by Charles Clement as president (her husband? brother?). Not cancelled. Green border, gold seal. 5.5" x 9.75" Folds. 2) Hercules Gold Mines Company. No 1874, issued for 166 2/3 shares April 19, 1929. Not cancelled. Orange border and eagle vignette. 7.75" x 11.5" Folds. (Prag Collection) **Est. \$80 ~ \$100 HWAC# 34934**

**Lot # 1580 Nevada, Churchill County Two Churchill County, Nevada Mining Stock Certificates 1908 & 1926** Two different. 1) Chicago Dixie Mining Company. Office in Fallon. Inc. in Nevada. No. 508, issued for 200 shares to A.W. Martindell on Fed. 28th, 1908. Signed by the president and secretary. Not cancelled. Eagle vignette. Folds, toning. 2) Desert View Development Company. Principal Place of Business: Fallon. Inc. in Nevada. No. 105, issued for 1,000 shares to W.W. Waddell on July 8, 1926. Corporate signatures. Pen cancelled. Vignette of mine. Wear on left edge. Toning. **Est. \$60 ~ \$80 HWAC# 41178**

[See Photo Online](#)

[See Photo Online](#)

**Lot # 1581 Nevada, Churchill County Two Churchill County, Nevada Mining Stock Certificates 1916 & 1926** Two different. 1) Nevada Lincoln Mining Company. Issued 1916 for 100 shares. Not cancelled. Three mining vignettes. Folds, some toning. 2) Quartz-Chalk Mountain Mines Company. Issued 1926 for 1,000 shares. Not cancelled. Orange border and eagle vignette. Folds and toning. **Est. \$60 ~ \$100 HWAC# 42135**



**Lot # 1582 Nevada, Death Valley Lee Comstock Mining Company Stock Certificate** 1907 Extra rare Lee District, Death Valley. Inc. in Nevada. No. 369, issued for 84 shares to J.H. Rickel on November 26th, 1907. Signed by S.F. Lindsay as president and Paul DeLaney as secretary. Not cancelled. Gold corporate seal and three mining vignettes. Folds, clean. 5.5" x 10" A December 22, 1907 Los Angeles Herald article exclaims "Great Future for the Lee Mining District in Inyo County" and lists the Lee Comstock as one of the properties on the Nevada side. The Lee District was about 25 miles from

Rhyolite, Nevada. **Est. \$100 ~ \$200 HWAC# 43012**

**Lot # 1583 Nevada, Diamondfield, Nevada Mining Stock Certificates**

Lot of 5 from this small mining camp ghost town located 5 miles northeast of Goldfield that was founded in 1903 and boomed in 1904. Included: Diamondfield Triangle Mining Co. of Nevada (1907, mining vignettes, not cancelled); Diamondfield Extension Mining Co. (1912, not cancelled); Diamondfield Daisy Gold Mining Co. (1911, not cancelled, mining vignette); January Jones Leasing & Mining Co. (1906, great placer and hydraulic vignette, cancelled); and Diamondfield Black Butte Re-Organized Mining Co. (1923, allegorical vignette, not cancelled, rough condition). Please inspect. **Est. \$100 ~ \$200 HWAC# 42116**



vignettes), and Kimberly New York Mining Company (1913, not cancelled). Please inspect. **Est. \$200 ~ \$400 HWAC# 43013**

**Lot # 1586 Nevada, Ely & Pioche Nice Group of Ely & Pioche Mining Stock Certificates**

1907-1922 Lot of five different. Includes: Ely Consolidated Copper Co. (1911, not cancelled, folds); Nevada Silver Horn Mining Co. (Pioche, 1922, not cxl); Pioche X-Ray Mining & Milling Co. (1909, stamped Promotion Stock, folds); Ely Gibraltar Mining Co. (unissued); and The Bristol Consolidated Mines & Smelting Co. (Lincoln County, 1907, not cxl, folds). (Prag Collection) **Est. \$120 ~ \$200 HWAC# 34924**



[See Photo Online](#)

**Lot # 1584 Nevada, Ely B. P. O. E., Ruth Copper Pit Mining, Pin** 1926 Rare pin with ribbon. Monument to Mining "Ruth Copper Pit", State Convention BPOE, Ely, Nevada, 1926. **Est. \$70 ~ \$120 HWAC# 39662**

**Lot # 1585 Nevada, Ely Ely, Nevada Mining Stock Certificate Collection**

1908-1957 Lot of 9 different. Included: The Pittsburg Ely Copper Company (1908, not cancelled, smelter vignette), Boston & Ely Consolidated Mining Company (1919, punch cxl), Ely Consolidated Copper Company (1910, for 60,000 shares!, not cancelled, allegorical vignette), Ely-Witch Copper Company (1918, cxl, very ornate design), Consolidated Copper Mines (1957, punch cxl, allegorical vignette), Federal Ely Copper Company (1916, punch cancelled), Ely Central Copper Company (1910, not cancelled, mining vignette), East Cumberland Ely Company (1909, punch holes, 3 mining



**Lot # 1587 Nevada, Esmeralda Very Early, Territorial, First North Extension Stock Certificate** 1862 Incorporated in 1861. Number 107 for 10 shares issued to William E. Shimmin on February 28m=, 1862. Signed by president Alex Gamble and secretary Solon Pattee. Vignette at top of a cherub-like child with dog and safe. Printer was Britton & Company. 5 x 9". Very Fine. This is an incredibly early Esmeralda stock. And this stock was the earliest one printed in San Francisco reported in the Filer Collection. Pattee was secretary for a number of Aurora mining companies including the Wide West also sold out of San Francisco. Gamble was listed as being a mining business man in San Francisco. William Edward Shimmin, a native of the Isle of Man who, in 1850, joined one of the great ox-team trains crossing the desert wastes, came to and mined in Nevada, and finally reached California. While he was in Esmeralda county, Nevada, he discovered, with Brawley, the Aurora mines, and was one of the men first to put a pick into the famous Garibaldi. He made and lost several fortunes, went back and forth between the West and the East, and in the end sent for his family, who arrived in San Francisco, via Panama, April 19, 1863. The original district was ten miles square and named by M. J. Corey, one of the three original discoverers in the summer of 1860. James Braley, ER Hicks and Corley were camped at Esmeralda Hill when Hicks went to shoot some game for breakfast. He noticed the quart outcrop, broke off chunks and hauled them back to camp. His partners test the quartz for silver and gold. The first claim was the Old Winnemucca ledge, located August 25, 1860. The first mill was built in June of 1861, and within a year there were nine more mills. Clemens never wrote a word about this company. Its activity is unknown. Several of these certificates came out about 16 year ago and are now dispersed. (Ref: Kelley, Angel, SF 1862 Directory, History of San Luis Obispo County and Environs California with Biographical Sketches.) **Est. \$600 ~ \$1,200 HWAC# 40071**







**Lot # 1588** Nevada, Esmeralda County **Miller Gold Mining Company Stock Certificate** 1881 Location of Mine: Cold Mountain District, Esmeralda County, Nevada. Inc. in New York. No. A2735, issued for 50 shares to D.F. Verdenal on July 1st, 1881. Signed by the vice-president (William McCaulley)

and secretary. Not cancelled. Printed by American Bank Note Co., New York. Brown border and boxed underground mining vignette. Folds, pinholes, and some soiling. 7" x 10.5" The Cold Mountain district was discovered in 1866 with the first ore shipped from the Oriental in 1871. Ore was originally processed by arrasteres and the district is accredited with about \$500,000 in production. There were three main companies working in the district in the 1880's: Oriental, Miller Gold Mountain and State Line. The Miller Gold Mountain is the scarcest of the three companies. **Est. \$100 ~ \$200 HWAC# 41156**

**Lot # 1589** Nevada, Esmeralda County **Oriental Gold Mining Company Stock Certificate** 1881 Location of Mine: Gold Mountain District, Esmeralda County, Nevada. Inc. in New York. No. A925, issued for 50 shares to the company secretary, D.F. Verdenal. Also signed by the president (A.D. Breed). Not cancelled. Brown border, vignette of prospector (upper left) and allegorical woman (right). Printed by ABN. Pinholes, folds, soiling, creased corners. 7" x 10.75" **Est. \$100 ~ \$200 HWAC# 41159**



**Lot # 1590** Nevada, Esmeralda County **State Line Gold Mining Co. No. 3 & 4 Stock Certificates** 1881 Two different sought-after certificates, both identified on stock as Gold Mountain District, Esmeralda County, Nevada. 1) Co. No. 3. Stock A2982, issued for 50 shares to D.M. Francis on July 16, 1881. Signed by Lee Shyrock (president) and D. Yirdinal (secretary). Not cancelled. Printed by ABN. Orange border and underground mining vignette. Folds, pinholes and toning. 2) Co. No. 4. Stock No. A3236, issued for 50 shares on Oct. 4, 1881. Same



corporate signatures. Not cancelled. Maroon border with two vignettes (one underground and one surface). Also printed by ABN. Folds. **Est. \$200 ~ \$300 HWAC# 41157**

**Lot # 1591** Nevada, Eureka **Eureka, Nevada Mining Stock Certificate Trio incl. Governor Signature** 1884-1927 Lot of 3 different. 1) Eureka Tunnel Consolidated Mining Company. No. 19, issued in 1884 for 20 shares. Signed by John Parady as secretary and Reinhold Sadler as president. Sadler's signature is pen cancelled. Sadler was the 9th governor of Nevada (1896-1903). 2) Eureka Smelting Company. No. 11057, issued in 1925. Not cancelled. 3) Eureka-Croesus Mining Company. No. 77923, issued in 1927. Not cancelled. **Est. \$90 ~ \$120 HWAC# 42144**

**See Photo Online**

**Lot # 1592** Nevada, Eureka **Geology of the Eureka District, Nevada**

1892 "Geology of the Eureka District, Nevada with an Atlas" by Arnold Hague. Published by the US Geological Survey. 11.75" x 9", 419 pp. Also included: Eureka Mining District, Professional Paper by Thomas B. Nolan. Includes several fold out maps. **Est. \$120 ~ \$150 HWAC# 40300**

**See Photo Online**



**Lot # 1593** Nevada, Eureka **Hoosac Consolidated Gold & Silver Mining Co. Stock Certificate** 1878 Very rare. Inc. in New York. Location of Works: Eureka, Nevada. No. 178, issued for 50 shares to H.S. Babcock

on June 29th, 1878. Signed by the president (Rollins) and secretary. Not cancelled. Black border and vignette of miners working underground. Folds with minor separation, creases and toning along edges. 6.5" x 11.25" The Hoosac Mine was one of the oldest in the district, having been located in 1869. All of the mine workings were in quartzite. **Est. \$150 ~ \$300 HWAC# 43035**

**Lot # 1594** Nevada, Eureka **Two Eureka, Nevada Mining Stock Certificates 1)**

Eureka-Croesus Mining Company. Inc. in Delaware. No. 77992, issued for 1,000 shares to Amos H. Sibley on July 29th, 1927. Signed by the president (Torres) and secretary (Wilcox). Not cancelled. Allegorical vignette. Folds and toning. Properties included the Ruby-Dunderberg, Connelly, and a number of older mines. 2) Eureka Hamilton Mines Company. Inc. in Nevada. Mines located on Treasure Hill, Hamilton, White Pine County. No. 1037, issued for 1,00 shares to Fred Rodda in 1912. Not cancelled. Green background and mining vignette. Soiling. **Est. \$60 ~ \$120 HWAC# 41170**

**See Photo Online**

**See Photo Online**

**Lot # 1595** Nevada, Eureka County **Sheet of Ruby Hill Tunnel & Mining Company Stock Certificates**

1880s Sheet of four consecutive unissued stocks (509-512) for this company located on Prospect Mountain, Eureka County, Nevada. Printed on yellow paper by A. L. Bancroft & Co. Lith., SF. Sheet is approx. 16" x 9.5" with some creases. **Est. \$60 ~ \$100 HWAC# 41152**

**Lot # 1596** Nevada, Eureka County **St. Peters Consolidated Gold & Silver Mining Co. Stock Certificate**

1887 Inc. in Illinois. Mine located in the Antelope District, Eureka County, Nevada. No. 99, issued for 20 shares to William Whalen, the company president on August 17th, 1887. Also signed by the company secretary (Fay). Not cancelled. Silver seal and border, facsimile revenue imprint. Vignette of mine. Printed by John Norris, Chicago. Creases and one small tear along edge. 8" x 10.5" **Est. \$200 ~ \$400 HWAC# 43033**



## MINING EPHEMERA



**Lot # 1597**  
Nevada, Fairview  
**Nevada Fairview  
Mining Company  
Maps** c1906 Lot of  
four. 1) Blue print  
map of elevations  
showing surface  
assay results.  
Also shows the  
proposed tunnel.  
501 to 1". Map is  
24x13". 2) Reverse

16x11" map showing the locations of the individual mines. Includes the Bluff, Gold Coin, Fraction, etc. 400' to 1". 3-4) Two reverse copies of number one. The Nevada Fairview filed with the state of Nevada on June 21, 1906. The Fairview Nevada was located south of Fairview in Bell Canyon. A June 19, 1907 article from the Reno Evening Gazette says that the company is now shipping ore and will be paying a dividend soon. "... now getting a large quantity of extremely high-grade sulphide quartz" from tunnel number 4. Tunnel number 2 has also struck a rich vein. **Est. \$150~ \$300 HWAC# 41735**

[See Photo Online](#)

**Lot # 1598** Nevada, Fairview Mining  
District **Nevada Hills Mining Company  
Stock Certificate** 1908 Rare. This was  
a major Fairview mine. Inc. in South  
Dakota. Location of Mines: Fairview

Mining District (Churchill County). Nevada Hills was a smaller town built above Fairview and slight closer to the mines. Certificate No. 3053, issued for 100 shares to Cyrus Bentley on Feb. 11th, 1908. Signed by W.V. Rice as president and the company secretary. Punched upper left corner. Small vignette of Nature scene. Pinholes, folds, toning. 6.5" x 9.5" **Est. \$100 ~ \$150 HWAC# 43026**

**Lot # 1599** Nevada, Fay **Bull Hill  
Nevada Gold Minngn Company Stock  
Certificate** 1910 RARE stock certificate  
from Fay, Nevada. Fay is on the Nevada  
/ Utah border. Number 159 for 2,500 shares to G. N. Smith. Signed by  
president AH Sproule and Secretary DH Rotcher(?). Three small mining  
scene vignettes on top. Stamped Treasury Stock. Two folds. Fay started  
in 1899. In 1901 it had four saloons, several stores, a post office, and  
regular stage service. Fay began to fail in 1915, but the post office wasn't  
removed until 1924 **Est. \$50 ~ \$75 HWAC# 41736**

[See Photo Online](#)

**Lot # 1600** Nevada, Garfield Mining  
District **Nevada Garfield Excelsior  
Mining Company Stock Certificate**  
1921 Extra rare Garfield Mining District  
(Mineral County, Nevada). Inc. in Nevada.

No. 129, issued for 500 shares to Bessie Colyer on April 24, 1921. Signed by the president and secretary. Not cancelled. Green border and seal, eagle vignette (top center) and mining vignettes on either side. Folds with some separation. 8.5" x 11.5" **Est. \$60 ~ \$100 HWAC# 43018**

**Lot # 1601**  
Nevada, Gold Hill  
**American Mining  
Company Stock  
Certificate** 1870  
Inc. in California,  
1867. Location of  
mine was Gold Hill,  
Nevada (Comstock  
Lode). No. 767,  
issued for 20 shares to A.J. Donner on Dec. 22, 1870. Signed by the  
president (Harrison?) and secretary (JM Buffington). Not cancelled.  
25 cent adhesive revenue at lower left. Vignette of bald eagle. Printed  
by Britton & Rey, SF. 4" x 8.5" Folds and a stain in the middle. (Prag  
Collection) **Est. \$120 ~ \$200 HWAC# 34912**



**Lot # 1602** Nevada, Gold Hill **Three  
Different Gold Hill Mining Stock  
Certificates** 1880-1911 1) Curtis  
Consolidated Mining Company. No.  
701, issued for 100 shares in 1880  
to H.S. Stone, the company secretary.  
Also signed by the president. Not  
cancelled. Pinholes, clean. 2) St. Louis  
Mining Company. No. 5154, issued for  
100 shares in 1911 to J.B. McGrath.  
Signed by the vice-president and  
secretary. Not cancelled. Pinholes and  
folds but clean. 3) Alpha Consolidated  
Mining Company. No. 3625, issued  
for 200 shares to Charles D. Olney  
in 1911. Not cancelled. Folds, clean.



**Est. \$120 ~ \$150 HWAC# 42162**

**Lot # 1603** Nevada,  
Gold Hill **Two  
Different Gold  
Hill Mining Stock  
Certificates: Potosi  
and Exchequer**  
1900 & 1905 Two  
important Gold Hill  
mines. 1) Exchequer  
Mining Company. No.

756, issued for 200 shares in 1900. Pen and cut cancelled (repaired). Ink fading. 2) Potosi Mining Company. No. 355, issued for 50 shares in 1905. Corporate signatures are punch cancelled. Ink fading. Both approx. 4" x 9.5" **Est. \$100 ~ \$150 HWAC# 42163**



**Lot # 1604** Nevada, Gold  
Mountain Mining District  
**Trail Canyon Mining  
Company Stock Certificate**  
**signed by Governor Oddie**  
1907 Offices in Tonopah.  
Mines located in Gold  
Mountain Mining District,  
Nevada. Inc. in South  
Dakota. No. 31, issued for  
1,000 shares on June 24th,  
1907. Signed by T.L. Oddie

as president and the company secretary. Not cancelled. Brown border and eagle vignette. Printed by Security Bank Note Co., Philadelphia. Pinholes, folds. 7.5" x 11" Tasker L. Oddie (1870-1950) was 12th governor of Nevada (1911-1915) and a U.S. Senator from Nevada (1921-1933). He made his fortune in Tonopah. **Est. \$120 ~ \$200 HWAC# 43025**

**Visit our online catalog at  
www.Holabird Americana.com  
Zoom in and see detail on  
high resolution images of  
ALL LOTS**

**See Photo Online**

**Lot # 1605** Nevada, Gold Park **Gold Park Mining & Milling Company Stock Certificate** 1902 Rare location. Gold Park, Nevada was discovered in the 1860s with mining lasting all the

way into the 1940s. It straddled the line between Nye and Lander Counties. This certificate is No. 53, issued for 10,000 shares to G.A> Engle on April 10th, 1902. Signed by the president (Thomas Dalton) and secretary (John Cliff). Not cancelled. Green border and seal, three mining vignettes. Folds. 8.25" x 10.25" **Est. \$60 ~ \$90 HWAC# 43016**

**Lot # 1606** Nevada, Goldfield **"The Unity, Volume 1, Number 1" (Goldfield Mining Prospectus)** 1906 This is a February 1906 prospectus in the form of a magazine. George Calhoun was the publisher and the president and general manager of the Unity Consolidated Mining Company. 14 photographs of the people involved and the mining area. One map and one copy of an assay report. 32 pages. Volume 1 of the Mines Directory states it has 30 acres of unpatented claims. Certainly one of the most compelling prospectuses I have seen. Fold down the middle. **Est. \$20 ~ \$200 HWAC# 26915**

**See Photo Online**



**Lot # 1607** Nevada, Goldfield **Early Goldfield Mining Stock Collection (pre-1907)** 8 pieces. Pre-1907 and thus pre-Wingfield consolidation. Included:

Goldfield Kewanas Mining Co. (1906, not cxl), Desert Chief Mining Co. (1907, not cxl), Rochester Goldfield Mining Co. (1905, not cxl), Adams Goldfield Mining Co. (1905, not cxl), Goldfield Hub Mining & Milling Co. (1905, not cxl), Goldfield Trotter MC (1906, not cxl), Oakland-Goldfield Mining Co. (1906, not cxl), and The Atlanta Mines Co. (1905, cxl). Please inspect. **Est. \$180 ~ \$400 HWAC# 42112**

**Lot # 1608** Nevada, Goldfield **Five Scarce Goldfield, Nevada Stocks**

c1906 A group of five scarce Goldfield certificates. 1) Goldfield Dominion Mining Company (SD), issued 1907 for 1000 shares. Two allegorical females. EF. Uncancelled. 2) Goldfield Double Triangle Mining Company (AZ), issued 1910 for 100 shares. Three mining vignettes. Stamped Treasury Stock. VF. Uncancelled. 3) Goldfield Concordia Mining Company (AZ), issued 1906 for 100 shares. Archival repairs of center fold on the verso. Uncancelled. 4) Frances-Mohawk Mining and Leasing Company (WY), issued 1906 for



250 shares. Three mining vignettes. "MINES AT GOLDFIELD, NEVADA" printed in bold green capital letters diagonally across the certificate. Signed by H.T. Bragdon as vice-president. Bragdon became the first president of the Goldfield Stock Exchange. 5) January Jones Leasing and Development Company (AZ), issued for 100 shares. Signed by January (Jno.) Jones as president. James Jones opened up the famous January mine and became known as January. The January mine adjoined the Combination mine. Jones secured the lease and in twelve months took out over \$1 million from the mine (The Sunset, Volume 15, Part I). Black pen cancelled across body of the certificate and thru signatures. **Est. \$300 ~ \$500 HWAC# 41339**

**Lot # 1609** Nevada, Goldfield **Five Scarce Goldfield, Nevada Stocks-Second Group**

c1907 A second group of five scarce Goldfield certificates. 1) St. Ives Gold Mining and Milling Company (AZ), issued 1909 for 3100 shares at Goldfield, Nevada. Issued to the Goldfield Merger Mines Company. EF. Uncancelled. 2) General Washington Mining Company (SD), issued 1907 for 1000 shares. Three mining vignettes. Heavy folds. Uncancelled. 3) Goldfield Eureka Mining Company (AZ), issued 1907 for 1000 shares. Three mining vignettes. Uncancelled. 4) Goldfield Oro Mining Company (AZ), issued 1917 for 500 shares. Signed by Thomas F. Manning, Resident Agent as vice-president. Principal place of business, Goldfield, Esmeralda County, Nevada printed on certificate. Large oval mining vignette of miners underground. A few pinholes. VF. Uncancelled. 5) Rochester Goldfield Mining Company (AZ), issued 1910 for 1000 shares. Mining vignette top left. Uncancelled. **Est. \$300 ~ \$500 HWAC# 41340**



**Lot # 1610** Nevada, Goldfield **Goldfield Mining Stock Certificate Collection: "Extension" Mines** Lot of 6 certificates from claims with the same name as the big money makers in the gut of the district but are "extension." Unknown if they were related. Included: Sandstorm Extension Mining Co. (1905, not cancelled), Mohawk Extension Mining Co. (1907, not cancelled), Red Top Extension Mining

Co. Reorganized (1917, mining vignettes, not cancelled), two Jumbo Extension Mining Co. (1912 & 1916, not cancelled), and The Red Top Extension Mining Co. (1907, eagle vignette, not cancelled). **Est. \$150 ~ \$250 HWAC# 42115**

## MINING EPHEMERA



**Lot # 1611**  
Nevada,  
Goldfield  
**Goldfield  
Mining Stock  
Certificates:**  
"Gut" of the  
District Lot  
of 7 from  
mainstream  
mines located

in the "gut" of the Goldfield District. Best is a gorgeous Mohawk-Daisy Leasing & Mining Corporation 1906 stock signed by M.J. Monnette, not cancelled. Others: Goldfield Combination Fraction Mining Co. (1908, not cancelled), Red Hill Florence Mining Company (1926, not cancelled), Goldfield Consolidated Mines Company (1917, punch cancelled, detailed mining vignette of workers with drill), Florence Goldfield Mining Company (1925, not cancelled), The Combination Fraction Leasing & Mining Co. (1907, not cancelled), and the Sandstorm-Kendall Cons. Mining Co. (1923, not cancelled). Please inspect. **Est. \$160 ~ \$300** HWAC# 42114

**Lot #  
1612**  
Nevada,  
Goldfield  
**Goldfield  
Mining  
Stock  
Collection  
(1907-  
1908  
Period)**



10 pieces. Covers period of Wingfield consolidation to Goldfield consolidation. Included: Goldfield Berkeley MC (1908, not cxl), Potlach Richards Leasing & Mining Co. (1907, 8,000 shares, not cxl), Florence Wheeler MC (1908, not cxl), Red Hill MC (1908, cxl), Goldfield Somerset MC (1907, not cxl), Goldfield Blue Bell MC (1908, not cxl), Kansas City Goldfield MC (1907, cxl), Daisy Extension MC (1907, not cxl), Goldfield Brooklyn MC (1907, not cxl), and Goldfield Monte Zuma Mining & Milling Co. (1908, not cxl). Please inspect. **Est. \$200 ~ \$300** HWAC# 42111



**Lot # 1613** Nevada, Goldfield **Goldfield Mining Stock Collection (Post-Wingfield Consolidation)** Lot of 15. From post consolidation by Wingfield. Included: Goldfield Ruby Hill MC (1912, not cxl), Sunset Mining & Dev. Co. (1915, not cxl), Silver Pick Cons. MC (1924, not cxl), Reorganizes Kewanas MC (1925, not cxl), Vernal MC (1912, not cxl), Goldfield Belmont MC (1912, not cxl), Cracker Jack MC (1906, cxl), Goldfield Oro MC (1916, not cxl), Reorganized Booth MC (1924, cxl), Jumbo Junior MC (1914, not cxl), Majestic MC (1910, not cxl), Goldfield Deep MC (1920, not cxl), Reorganized Cracker Jack MC (1919, not cxl), Gold Cliff MC (1914, not cxl), Goldfield Daisy Mining Syndicate (1909, not cxl). Plus two unused Goldfield checks. **Est. \$200 ~ \$400** HWAC# 42110

**Lot # 1614** Nevada, Goldfield  
**Great Bend Mining  
Company Stock Certificates**  
Lot of 4 different. Included:  
Goldfield Great Bend Mining  
Company (1907, not cxl,  
three vignettes), Great Bend  
Extension Mining Company  
(1909, multiple vignettes,  
not cxl), Great Bend Fraction  
Mining Company (1907, not  
cxl), and Great Bend Annex  
Mines Company (1908, turtle vignettes, not cxl). **Est. \$100 ~ \$150**  
HWAC# 42113



**Lot # 1615** Nevada, Goldfield **Round Mountain Mining Company Stock Book** Over 200 stock certificates from the Round Mountain Mining Company of Goldfield, 1907-1909. Back cover missing, front cover separated from the certificates. **Est. \$500 ~ \$750** HWAC# 42217



**Lot # 1616** Nevada,  
Goldfield **Second  
Annual Edition of the  
Mining and Investment  
World printed by  
Goldfield News** 1906  
Bound! Amazing,  
important primary  
source documents.  
60 pages full of local  
advertisements, mining  
men in Nevada, mines  
of Nevada and Nevada  
Mining Districts.  
Mining districts include  
Goldfield, Wonder,  
Tonopah, Fairview,  
Searchlight, Round  
Mountain, Buckskin,  
Walker Reservation,  
Johnnie, Cortez, Ramsey,  
Greenwater, Lida,  
Bullfrog, Red Springs,  
Manhattan. Bios of Judge

Dean, Henry Stimler, Kenneth Donnellan, James Riggle, Paul Cope, George Bartlet, JS Daly, EA Holt, RW Tucker, etc., etc. Lots of black and white photographs of the many important mining men, mines, and some particularly rare photographs of the camps where the mines were located. 15.5 x 11". Front color page has rips and tears, but the inside is in near perfect condition. A historians or collectors dream reference work! **Est. \$900 ~ \$1,400** HWAC# 41758

**Lot # 1617** Nevada, Goldfield **Seven Different Goldfield Mining Stock Certificates** 1905-1906 Lot of 7. Nice group. All pictorial. Fair to good condition. Includes: Cracker Jack Mining Co. (1906, stamp



and punch cancelled); The Atlanta Mines Co. (1905, punch cxl); The Rochester Goldfield Mining Co. (1905, not cxl); Mohawk Junior Mining Co. (1906, not cxl); United Tonopah & Goldfield Mines (1906, not cxl); Diamondfield

Black Butte Consolidated Mining Co. (1906, punch cxl); and Cyrus Noble Extension Mining Co. (1906, not cxl). (Prag Collection) **Est. \$140 ~ \$200 HWAC# 34925**

**Lot # 1618 Nevada, Goldfield Geology and Ore Deposits of Goldfield, NV** 1909 Professional Paper 66, "The Geology and Ore Deposits of Goldfield, Nevada" by Frederick Leslie Ransome. Paperback, loose from binding, 11.5" x 8.75". Publication includes fold out map and great photos and other maps. 285 pp. Published by the Dept of the Interior, US Geological Survey, 1909. **Est. \$100 ~ \$200 HWAC# 39674**

[See Photo Online](#)

**Lot # 1619 Nevada, Goodsprings Yellow Pine Mining Company Stock Certificate** 1928 Clark County. Inc. in Nevada. No. 7009, issued for 5,700 shares to Carrie & William Slayden on Oct. 2nd, 1928. Signed by the president and assistant secretary. Ornate border with multiple mining vignettes. Printed by the Stationers Corp., LA. Folds with minor separation and a few stains. 8.5" x 10.75" (Prag Collection) **Est. \$50 ~ \$100 HWAC# 34854**

[See Photo Online](#)

**Lot # 1620 Nevada, Jarbidge Large Mining Claim Map of Jarbidge, Nevada** Jarbidge mining map. 1911, by WW Fisk, made for the Twin Falls Development Company, Twin Falls, Idaho. 14.5 x 21", black on brown paper. Scarce. **Est. \$200 ~ \$400 HWAC# 43644**



**Lot # 1621 Nevada, Johnnie Nevada General Gold Mining Company Stock Certificate** 1907 Rare. Inc. in Arizona. Location of Works: Johnnie, Nevada. No. 537, issued for

[See Photo Online](#)

100 shares to James P. Morris on November 4th, 1907. Signed by the president (B.S. Stephens) and secretary (W.A. Stephens). Brown border and seal and vignette of mine. Deep folds and toning. 8.25" x 10.25" **Est. \$60 ~ \$100 HWAC# 43024**

**Lot # 1622 Nevada, Johnnie The Johnnie-Wonder Gold Mines Company Stock Certificate** 1907 Very rare. According to The Mining Investor (Vol. 48-49), the company owned five full claims and a fraction aggregating about 130 acres in the Johnnie District in Nevada with a vein showing gold, silver, and copper. Inc. in Arizona. No. 524, issued for 500 shares to James P. Morris on Feb. 6, 1907. Signed by the vice-president and secretary. Not cancelled. Gold seal, three mining vignettes. Printed by C.F. Hoeckel B.B. Co., Denver. Folds. 5.5" x 10" **Est.**

**\$100 ~ \$150 HWAC# 41151**

**Lot # 1623 Nevada, Manhattan Five Different Manhattan Mining Stock Certificates** 1906-1917 Lot of 5. Included: Manhattan Pine Nut Mining



[See Photo Online](#)

Co. (1906, not cxl, eagle vignette, stains), Manhattan Consolidated Mines Development Co. (1917, not cxl, vignette of smelter), White Caps Extension Mines Co. (1917, issued to vice-president, not cxl, staining), White Caps Mining Co. (1917, not cxl), and Manhattan Red Top Mining Co. Reorganized (1917, not cxl). **Est. \$100~\$120 HWAC# 42174**

**Lot # 1624 Nevada, Manhattan Five Manhattan Mining Stock Certificates** 1906-1917 Lot of 5 different. Included: Manhattan Jackson Mining Co. (1908, not cxl), Jumping Jack Merger Mines (1912, not cxl), Manhattan Big Four Mining Co. (1913, not cxl, nice mining vignette), Mustang Manhattan Reorganized Mining Co. (1917, not cxl, mining vignette), and Chipmunk Gold Mining Co. of Manhattan (1906, not cxl, allegorical vignette). **Est. \$80 ~ \$120 HWAC# 42173**

[See Photo Online](#)

**Lot # 1625 Nevada, Manhattan Manhattan-Nome Gold Tied Mining Stock Certificates** Lot of 3 stocks plus one bond for



Manhattan companies with Alaska Gold Rush names in their title. Includes: Manhattan-Dexter Mining Company of Nevada (1907, not cxl), Manhattan-Treadwell Gold Mining Company (1906, not cxl), Dexter White Caps Mining Co. of Manhattan (1911, not cxl, mining vignettes), and a \$500 bond for The Dexter Mining Company (1906, not cxl, 40 coupons attached). **Est. \$100 ~ \$200 HWAC# 41135**

**Lot # 1626 Nevada, Manhattan Seven Manhattan Nevada Mining Stock Certificates** 1906-1908 Lot of 7 different.

Included: Manhattan Giant Mining Co. (1906, cancelled, mining vignettes), Manhattan Thelma Mining Co. (1908, not cancelled), Manhattan Le Roy Mining Co. (1906, not cancelled, mining vignettes, gilt borders), Manhattan Mascott Gold Mining Co. (1907, not cancelled, mining vignettes), Atlas Manhattan Mining Co. (1906, not cancelled, allegorical vignette), Manhattan Cowboy Mining Co. (1907, not cancelled), and The Manhattan Bob Roy Gold Mining Co. (1906, not cancelled, eagle vignette). **Est. \$120 ~ \$200 HWAC# 42147**



# MINING EPHEMERA

See Photo Online

**Lot # 1627** Nevada, Manhattan **Six Manhattan, Nevada Mining Stock Certificates** 1906-1932 Lot of 6 different. Included: Manhattan Gold Mines Co. (1932, not cxl), Little Joe Gold Mining Co. of

Manhattan (1906, not cxl, mining vignettes), Ogden Manhattan Mining Co. (1907, not cxl), Manhattan Higgins Mining Co. (not dated, issued to Goldfield Jackpot Mining Co., not cxl), Consolidated Manhattan Mining Co. (1907, not cxl, 3 mining vignettes), and The Manhattan Union Mining Co. (1920, not cxl, allegorical vignette). Please inspect. **Est. \$90 ~ \$120** HWAC# 42172

See Photo Online

**Lot # 1628** Nevada, Manhattan **Two Oversized Manhattan Mining Stock Certificates** 1905 & 1910 1) The

Manhattan Gold Mining Company. No. 46, issued for 1,200 shares to the company president, C.E. Hegard on Jan. 134, 1906. Also signed by the secretary. Not cancelled. Eagle vignette. Printed by H.S. Crocker & Co., SF. 9.5" x 12.5" Folds, some separation and toning. 2) Austin Manhattan Consolidated Mining Company. No. 10811, issued for 500 shares on Dec. 31st, 1910. Signed by the company president (Miesse) and secretary (Evans). Not cancelled. Vignette of mine and smelter. Printed by Western Bank Note Co., Chicago. 9.5" x 14" Folds with some separation, hole at top above vignette. **Est. \$100 ~ \$120** HWAC# 42166

**Lot # 1629** Nevada, McGill **Geologist Office Collection** This is a really fun lot. The geologists office. This is a group of approximately 100 or more collectibles from a copper geologists office probably at McGill, Nevada.

It contains Kennecott collectibles mining collectibles, rusty mining lamps and artifacts, carbide lamps, purple bottles, souvenir cups from mining company contractors and beer companies and other fun little trinkets that you would find in a mining man's office in the 1960s. Three boxes full! **Est. \$120 ~ \$200** HWAC# 42709

**Lot # 1630** Nevada, McGill **McGill Mining File Collection**

This lot consists of five separate files for smelter returns at McGill, Nevada. This very important group of files from the 1930's and '40s show how the large mine and smelter at McGill needed quartz as flux for the processes. In order to get that quartz flux, small miners submitted high-grade gold and silver ores and were paid accordingly. This system was in place for more than 40 years and formed of an important part of the overall American mining process because it allowed small miners to generate revenue on their high-grade or without having to build their own mill. This was very important to the economics of the mining industry as a whole. These files reflect that. And five specific deals. They may be all this important. **Est. \$200 ~ \$400** HWAC# 42300

**Lot # 1631** Nevada, Nye County **Knickerbocker & Nevada Silver Mining Co. Stock Certificate**

**(1867)** Rare certificate for this mine located in the Union Mining District, Nye County, Nevada. Low No. 9, issued for 10 shares to William Vaill on September 2, 1867. Signed by Nelson Curtis (president) and Nichols (secretary). Not cancelled. Printed on thin paper with an ornate border and underground mining vignette by Hatch & Co., New York. Trimmed tight on the left, toning, deep vertical folds and some creases. 8.5" x 10.25" **Est. \$400 ~ \$800** HWAC# 42106



**Lot # 1632** Nevada, Pioche **Pan-American Mining & Smelting Company Stock Certificate**

1904 Extra rare certificate for this major Pioche silver mine. No. 904, issued for 3,333 shares to Harrison Wagner on April 5th, 1904. Signed by the president (F. Howard Skinner?) and secretary (Harry Lindsley). Orange border with underground mining vignette. Folds with separation and some toning. 8" x 11.25" **Est. \$100 ~ \$150** HWAC# 43019



**Lot # 1633** Nevada, Ramsey **Ramsey-Nevada Mining Company Stock Certificate** 1908

Rare. Inc. in Arizona. No. 265, issued for 10,000 shares Dawson on March 2nd, 1908. Signed by the company president and secretary (Tisdall). Not cancelled. Attractive certificate with maroon border with mining vignettes and three larger vignettes at top. Printed by The Broun-Green Co., NY. Folds. 8.5" x 11.5" **Est. \$100 ~ \$150** HWAC# 43020



**Lot # 1634** Nevada, Ramsey **Ramsey-Ottawa Mining Company Stock Certificate** 1909 Extra rare Ramsey, Nevada mining certificate. Inc. in Arizona. No. 31, issued for 1,000 shares Dawson in 1909. Signed by the president and secretary. Not cancelled. Green border and eagle vignette. Printed by The Broun Co.,

New York. Folds, creases/bends and some toning. **Est. \$100 ~ \$200** HWAC# 41169

**Lot # 1635** Nevada, Round Mountain **Three Round Mountain, Nevada Mining Stock Certificates** 1907-1910 Lot of 3 different. Nye County. 1) Rarest is Eagle

See Photo Online

Mining Company of Round Mountain. No. 13, issued for 14,514 shares to W.H. Woods on June 15, 1909. Signed by the president and treasurer. Not cancelled. Green border and seal and multiple mining vignettes along the top. Hole in seal, folds, bent upper right corner. 2) Round Mountain Mining Company. No. 4140, issued for 100 shares on Oct. 11, 1910. Stamp and pen cancelled. Vignette of child. Folds, toning. 3) Different Round Mountain Mining Company. No. 351, issued for 1,000 shares on April 8th, 1907. Same corp. signatures. Pen cancelled. Three mining vignettes. Folds and toning. **Est. \$60 ~ \$90 HWAC# 43017**

**See Photo Online**

**Lot # 1636** Nevada, Ruby Hill / Eureka **Two U. S. Geologic Maps: Ruby Hill and Eureka, Nevada 1881, 1882** 1) 19.5 x 15". F. A. Clark Topographer and Arnold Hogue geologist. 1882 annual

report from the U. S. Geological Survey. 2) Same as number one, but smaller. Ruby Hill Mining District. 1881. By Hogue and Clark. **Est. \$80 ~ \$150 HWAC# 41848**

**Lot # 1637** Nevada, Smelter / McGill **McGill and Smelter Concentrator Real Photo Postcards** c1910 (1) Smelter and Concentrator, (2) Concentrator, (3) Trestle at McGill. Probably Gallagher photographs. **Est. \$80 ~ \$200 HWAC# 22765**

**See Photo Online**



**Lot # 1638** Nevada, Tecoma **The Nevada Blue Ridge Mining Company Stock Certificate** 1881 Extra rare Tecoma, Elko County, Nevada. Tecoma was known as a railroad stop for mines in other districts. Few local mining companies were

ever formed. Certificate No. 44, issued for 100 shares to the company secretary E.W. Wiggins on Feb. 15th, 1881. Also signed by the company vice president, J.F. Woodman. Not cancelled. Gilt border and small vignette of dog next to safe. Folds, very nice condition. 5" x 9.75" **Est. \$110 ~ \$200 HWAC# 41160**

**Lot # 1639** Nevada, Tem Piute Mining District **Wyandotte Silver Mining Company Stock Certificate** 1879 Rare Tem Piute Mining District, Lincoln County, Nevada. Inc. July 25th, 1878. No. 434, issued



for 150 shares to James Clews on Oct. 21, 1879. Signed by the vice-president and secretary. Not cancelled. Yellow colored paper trimmed tight. Folds and some toning on reverse of folds. 4" x 9.25" Not a large producer. The Tem Piute Mining District was organized a few months after silver was found in 1868. Mining remained difficult due to a lack of water in the region. Water had to be hauled in from springs 12 miles away. The Wyandotte Silver Mining Co. that shipped quantities for processing to nearby Crescent. The dismantling of the ten-stamp mill there all but halted mining here until the later findings of tungsten in 1916. [Paher, Nevada Ghost Towns & Mining Camps, 1973] **Est. \$100 ~ \$150 HWAC# 41155**

**Lot # 1640** Nevada, Tonopah **Collection of "Divide" Mining Stock Certificates** 1919-1949 Lot of 28 different! Includes: Goldsmith Divide MC, Divide City MC, Aladdin Divide MC, New Sutherland, Harmill,



Consolidated Silvers, Inc., Silver Divide MC, New Alto, Northwest Divide MC, Keystone Divide MC, Grimes, Pay Divide MC, Thomson, Lucky Boy, Smuggler, Liberty, Hercules, Horseshoe, California, Gold Zone, Brougner, Mecca, Western Divid Mining & Milling Co., and Re-organized Silver King. Issued 1919-1949. Please inspect for condition. (Prag Collection) **Est. \$280 ~ \$500 HWAC# 39013**



**Lot # 1641** Nevada, Tonopah **Collection of Pre-1907 Tonopah Mining Stock Certificates incl. Butler Autograph** 1902-1906 Pre-consolidation. Lot of 9 different. Some great pictorials! Also have a Jim Butler autograph. Included: South Tonopah Consolidated Gold MC (1902,

mining vignette, not cancelled), Tonopah-Aspen MC (1903, stamp cancelled, 20,000 shares!), Great Western Mining Co. of Tonopah (1906, not cancelled, nice vignette of mine), Golden Anchor MC (1906, not cancelled, allegorical vignette), The Ohio-Tonopah MC (1906, buffalo vignette, not cancelled, signed by Jim Butler who started the Tonopah boom), The Montana-Tonopah MC (1906, cancelled, mining vignette, water damage), Tonopah Golden Crown Mining Co. (1906, not cancelled), Tonopah "76" MC (1906, 20,000 shares, cancelled), and Tonopah & Mount Butler Gold Mining Co. (1903, mining vignette, not cancelled). Great group! **Est. \$180 ~ \$350 HWAC# 42149**

**Lot # 1642** Nevada, Tonopah **Halifax Tonopah Mining Co. Stock Certificate Signed by "Borax" Smith** 1922

**See Photo Online**

Classic Nevada autograph. Certificate No. 2397, issued for 1,000 shares to Norman P. Ellis, the company secretary, on Oct. 9, 1922. Signed by F.M. Smith as president and Ellis as acting secretary. Not cancelled. Brown border and fancy logo. Creases and some tape-repaired tears on the top. 8.5' x 10.5" Francis Marion Smith (aka. "Borax" Smith) was known for establishing the first successful borax mining operation in 1872 at Teel's Marsh, Nevada. Helping to start the borax rush in the Nevada desert in the late 19th Century, Smith founded the Pacific Coast Borax Company, which later became U.S. Borax. (Ref: scvhistory.com). After making his fortune mining borax in Death Valley, he moved to Oakland, California and built the Key System of red cars that brought mass transit to the Bay Area. **Est. \$60 ~ \$100 HWAC# 43036**

## MINING EPHEMERA



**Lot # 1643** Nevada, Tonopah **Prospectus for The United Randopah Mining & Milling Company** c.1904 8 pages with map of claims. Office in Randsburg. Company owned eight claims, 158 acres in the Tonopah Mining

District: Liberty Bell, Little Gem, Home Ticket, Mountain View, General Custer, Antelope, Pacific and Rand. Includes three small "opinions" from trusted mining figures. Softcover, 5.5" x 3.5" with pin holes and chipped bottom corners. (Prag Collection) **Est. \$120 ~ \$150** HWAC# 34913



**Lot # 1644** Nevada, Tonopah **Tonopah "Divide" Mining Stock Collection** 1919-1970 This lot is a binder containing 44 different issued Tonopah, Nevada mining stocks for mining companies with "Divide" in their name. Earliest is 1919, latest is 1970, with most falling between 1919 and 1936. The Divide district was founded in 1917 with a discovery of silver ore at Gold Mountain. 1919 was the year of the boom for the district. The Divide District covers about 50 square miles and lies 5 miles south of Tonopah on the Tonopah-Goldfield road. Companies included in this collection (all have "Divide" in their name, excluded here for time): Tonopah Divide, Gold Zone, Brougner, Mecca, Thompson, High Divide, Sioux, Calumet, Northwest, Hecla, Pay, California, Kernick, Mizpah, Keystone, Silver, Sunbeam, New Alto, Smuggler, Homestake, Horseshoe, Divide Extension, Gold Reef, Reorganized Belcher, Aladdin, Liberty, Haines, Knox, Marne, Hennessy, East Divide, Lucky Boy, Western Divide, Midway, Gold Basin, Midland, New Sutherland, Gold Wedge, and Argonne. Most are pictorial. Please inspect this impressive group. **Est. \$500 ~ \$1,000** HWAC# 43037

**Lot # 1645** Nevada, Tonopah **Tonopah Gold Mountain Mining Co. Stock Signed by Key Pittman** 1904 No. 792, issued for 500 shares to Al Smith on June 30th, 1904. Signed by Key Pittman as vice-president and the secretary. Both signatures punch cancelled. Three mining vignettes. Some toning and folds. 5.5" x 10" Key Pittman (1872-1940) was a lawyer, politician, and mining man who is a part of Nevada legends due to his lifestyle and death. Raised in the South, Pittman studied law before heading to the Alaska gold fields to strike it rich. He was unsuccessful but



became known and respected for his mining law practice. He came to Nevada in 1902 and had his legal services sought after by the mining companies in Tonopah. He ran for the senate in 1910 but lost a close election to George Nixon. When Nixon died in 1912, Pittman won the special election to become a US Senator representing Nevada. He died only five days after being elected for his six straight term. A widely-spread hoax was that Pittman had died before the election and the Democratic Party had hid his body in a bathtub full of ice at a hotel in Reno. This has been debunked. Pittman did have a wild reputation due to his drinking problems. **Est. \$100 ~ \$150** HWAC# 42117

**Lot # 1646** Nevada, Tonopah **Tonopah Mining Stock Certificate Collection** 1902-1933 14 certificates, all different. Includes:

Tonopah & Goldfield Railroad Co. (unissued); Lone Star Cons. Mining Co. (1922, not cancelled); West End Extension MC (1927, stamp cxl, mining vignette); Mizpah Extension Co. of Tonopah (1902, not cxl, vignette of bee hives); different cert. for Mizpah Extension (1924, not cxl, mining vignettes); Cash Boy Cons. MC (1915, stamp and punch cxl); West End Cons. MC (1922, stamp cxl, underground hydraulic mining vignette); Halifax Tonopah MC (1933, not cxl); Rescue-Eula MC (1925, not cxl); Tonopah Belmont Development Co. (1933, not cxl, mining vignette); MacNamara Mining & Milling Co. (1920, not cxl); Gold Reef Cons. Gold & Silver MC (unissued); New Tonopah Dividend MC (1929, pen cxl); and Tonopah Oriental MC (1919, punch and pen cxl, mining vignette, rough condition). (Prag Collection) **Est. \$200 ~ \$300** HWAC# 39017



**Lot # 1647** Nevada, Tonopah **Tonopah Mining Stock Certificate Collection** 1903-1933 Lot of 14. Includes: Gold Reef Cons. Gold & Silver Mining Co. (1905), South Tonopah Cons. Gold Mining

Co. (1903), MacNamara Mining Co. (1914 & 1920), C.O.D. Leasing Co. (1910), Butler Gold Mining Co. (two from 1928), Rescue-Eula Mining Co. (1929), Cash Boy Cons. Mining Co. (two from 1920), New Tonopah Dividend Mining Co. (1927, 1930, 1933), and Goldsmith Divide Mining Co. (1923). (Prag Collection) **Est. \$140 ~ \$250** HWAC# 34905

**Lot # 1648** Nevada, Tonopah **Tonopah, Nevada Mining Stock Certificate Collection** 1907-1967 Lot of 19 different. All but one are issued. Included: West End Extension, Tonopah Belmont Development Co., Tonopah North Star Tunnel & Dev. Co., West End Cons., MacNamara Mining & Milling Co., Rescue-Eula Mining Co., Jim Butler Mining Co., Tonopah Gypsy Queen, Tonopah Seventy-Six Cons. Mining Co., Montana Tonopah Co. Reorganized, Mizpah Extension Co. of Tonopah, Silver Hills Nevada Mines Co., New Tonopah Dividend Mining Co., Tonopah Oriental Mining Co. (unissued), MacNamara Crescent Dev. Co. of Nevada, Cash Boy Cons. Mining Co., Tonopah





East End Dev. Co., West Tonopah Cons. Mining Co., Indiana Tonopah Mining Co., Tonopah Bonanza Mining Co., and an assay certificate from 1908. **Est. \$200 ~ \$400 HWAC# 42130**

**Lot # 1649** Nevada, Tonopah **Tonopah, Nevada Mining Stock Certificate Collection plus Railroad** 1906-1933 Lot of 11 (10 mining, one railroad).

Included: Hannapah Mining & Smelting Co. (1906, not cancelled, mining vignette), Eastern Star Mining Company (1915, not cancelled), Gold Reef Consolidated Mining Co. (1927, not cancelled), Reorganized Carrie Silver-Lead Mines Corp. (1933, Lincoln vignette, not cxl), Tonopah North Star Tunnel & Development Co. (1920, punch and pen cxl, mining vignette), Louisiana Consolidated Mining Co. (1919, not cxl), Umatilla Tonopah Mining Co. (1913, not cxl), Mizpah Extension Co. of Tonopah (1911, not cxl, mining vignettes), West End Cons. Mines Corp. (unissued, mining vignette), Silver Glance Mining Co. of Nevada (1907, not cxl, mining vignettes), and an unissued Tonopah & Goldfield Railroad Company stock. **Est. \$200 ~ \$400 HWAC# 41143**



**Lot # 1650** Nevada, Treasure Hill **Star of Nevada Silver Mining Company Stock Certificate** 1871 Mine in Treasure Hill, Nevada. London-based company selling 5 shares to Thomas Woodburne on November 13th, 1871. Signed by the directors and secretary.

Not cancelled. Offices at 28 Martin's Lane, Cannon Street, London. Printed by Riddle & Couchman. 5.5" x 9.5" Ragged bottom left edge, some toning/soiling. **Est. \$100 ~ \$150 HWAC# 42119**

**Lot # 1651** Nevada, Tuscarora **North Belle Isle Mining Company Stock Certificate** 1893 Location: Tuscarora District, Elko County, Nevada. Inc. June 25th, 1879. No. A324, issued for 100 shares to George B. Wilson on June 8, 1893. Signed by the president (E. Scott) and secretary. Not cancelled. Ornate blue border and company logo. Printed by W.R. Nidal, NY. 6.75" x 11.5" Very minor wear. **Est. \$70 ~ \$110 HWAC# 41153**

[See Photo Online](#)

**Lot # 1652** Nevada, Tuscarora **Pair of Tuscarora Mining Stock Certificates** 1871 & 1880 Tuscarora District, Elko County, Nevada. 1) The Star of Nevada Silver Mining Company, Limited. Issued in London, November 1871. Five shares to Thomas Woodburne. Signed by the

directors and secretary. Not cancelled. 5.5" x 9.5" Bent upper left corner. 2) The Belle Isle Mining Co. No. 5080, issued for 100 shares in 1880. Signatures very faint. Heavy staining and soiling to cert. Britton & Rey. 4" x 8.75" (Prag Collection) **Est. \$120 ~ \$200 HWAC# 34929**

**Lot # 1653** Nevada, Tuscarora **Two Tuscarora, Nevada Mining Stock Certificates**



1890 & 1891 Two different. 1) North Commonwealth Mining Company. No. A16, issued for 100 shares to E.R. Grant on Sep. 24, 1890. Signed by the president (E. Scott) and secretary (Pew). Not

cancelled. Very ornate logo. Printed by J.J. Bloomfield, NY. Folds, some soiling. 6.25" x 10.5" 2) Commonwealth Consolidate Mining Company. Listed on cert. as owners of the Veritas and All Alone Mines. No. 3505, issued for 100 shares to George Grant on Mar. 25, 1891. Signed by the vice-president (Hyman) and secretary. Not cancelled. Allegorical vignette. Repairs to punches. Some toning. 5" x 9.5" **Est. \$200 ~ \$300 HWAC# 41154**

**Lot # 1654** Nevada, Unionville **Two Different Unionville, Nevada Mining Stock Certificates** 1904 & 1920 1) Sheba Gold & Silver Mining Company. Mines in Humboldt County, Nevada.

[See Photo Online](#)

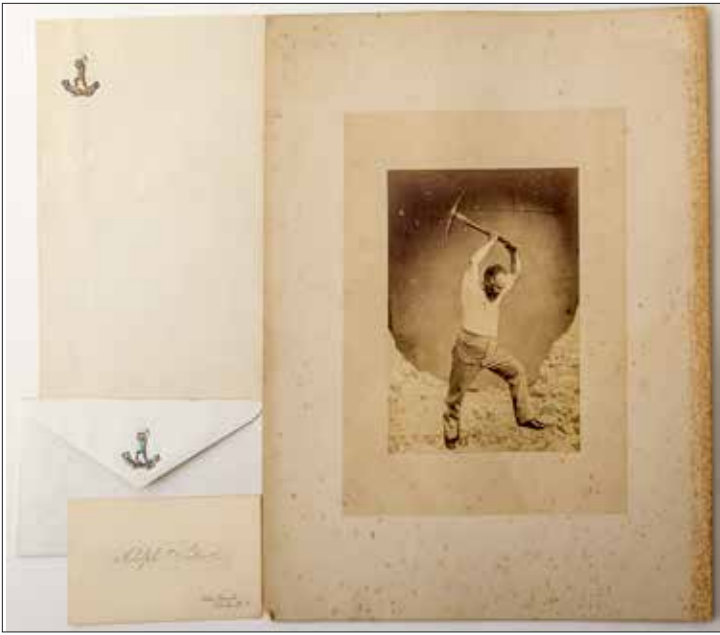
Inc. in Utah. No. 1119, issued for 100 shares in 1904. Not cancelled. Three mining vignettes. Folds. 2) Universal Silvers Company. Inc. in Nevada. No. C7965, issued for 100 shares in 1920. Not cancelled. Toning. **Est. \$60 ~ \$80 HWAC# 41173**

[See Photo Online](#)

**Lot # 1655** Nevada, Unionville **Unionville Mill Photograph** Photograph of the mill at Unionville Nevada. Measures 3.5" x 5.5" mounted to board, rare Unionville mining photograph. **Est. \$200 ~ \$300 HWAC# 40439**

**Lot # 1656** Nevada, Vernon **Nevada Shamrock Mining Company Stock Certificate** 1911 Pershing County ghost town. Mines located at Vernon, Nevada. Inc. in Nevada. No. 448, issued to 1,000 shares to the company president, A.A. Williams in 1911. Also signed by the secretary. Not cancelled. Stamped Promotion Stock. Green title, gold seal, black border and three mining vignettes. Folds, toning. 5.5" x 10" Rare. **Est. \$60 ~ \$90 HWAC# 43021**

[See Photo Online](#)



**Lot # 1657** Nevada, Sutro **Adolph Sutro Photo and Silver Foil Stationary** Sutro's dream was to dig a tunnel from the bottom of the mountains to the Virginia City mines to drain the water that was a real problem and to haul out ore. The Bank of California, who owned the V&T Railroad, opposed Sutro every step of the way effectively blocking him from getting much needed investment money in the United States. So, Sutro went to Europe. This is undoubtedly all connected to that. The original photo used to create fancy envelopes and letterhead to impress would be investors of the silver region in Nevada. Add the business card (which has the address of Nevada, United States) and you have the makings of Sutro's stock used to attract the funds he needed to complete his tunnel!

1) Photograph of Sutro swinging a pick at a pile of rock. Taken in a London Studio: London Portrait Studio / 68 Cheapside E. C. / Conducted by F. Gilling. Photo is .5 x 4" and mount is 12 x 9.5". Miner foxing on mount. 2) Unused envelope with the reverse of the photo embossed in silver foil on the flap. Great toning on silver. Inside of envelope is embossed with "Wyon / 287 Regent Street / London W." 3) Unused small (8 x 5") letter stationary with the same silver foil embossed Sutro swinging pick. 4) Adolph Sutro large business card (2.5 x 4"). Address; Sutro Tunnel, Nevada, U. S. What a great set! **Est. \$400 ~ \$800** HWAC# 42653



**Lot # 1658** Nevada, Sutro **The Sutro Tunnel** 1872 The Sutro Tunnel. Report of the Commissioners and Evidence taken by the Committee of Mines and Mining of the House of Representatives of the United States, in regard the the Sutro Tunnel together with the Arguments and Report

of the Committee Recommending a loan in the aid of the construction of said work. U.S. Congress. House of Representatives, Published by Government Printing Office., Washington: (1872). 1st edition. Hardbound, green leather with engraved lettering and image of miner. Pages are gold edged. Very good condition, edges of cover a bit worn. **Est. \$200 ~ \$300** HWAC# 39577

**Lot # 1659** Nevada, Virginia City **Four Comstock Tunnel Co. (Sutro)**

**Documents** 1874-1919 Lot of 4 that show the evolution of the Sutro Tunnel from the 1870s to the early 1900s. 1) 1874 supplement

to The Daily Independent featuring Adolph Sutro's mining lecture w/ many illustrations. Folds, foxing, some separation. 2) The Comstock Tunnel Company stock certificate. Inc. in NY. No. 29130, issued in 1912 for 100 shares. Not cancelled. 3) \$500 bond for The Comstock Tunnel & Drainage Company. Issued 1919. Mining vignette. Not cancelled. 60 coupons. 4) \$1,000 bond for the same company. Same but green instead of brown. (Prag Collection) **Est. \$100 ~ \$150** HWAC# 39020



**Lot # 1660** Nevada, Virginia City **Sutro Tunnel & Virginia City Ephemera**

1866-1882 Great small group for the Comstock or Sutro collector. Lot of 4. 1 & 2) Two different broadsides: large (28" x 20.5") 1866 broadside that outlines the Articles of Agreement for the company; and an 1869 smaller (15.5" x 7.25") broadside (newspaper supplement?) detailing the election of officers and power of attorney. Both broadsides have folds, foxing, rough edges. 3) 1882 Savage Mining Company voucher with a Sutro receipt attached for payment on ore processed by the mine (Sutro got 1/2 rates). 4) The well-known 4-page Sutro supplement to the Oct. 31st, 1874 issue of The Daily Independent (VC newspaper). Sutro's lecture transcribed with great mining illustrations and diagrams. Heavy folds, some separation and foxing. (Prag Collection) **Est. \$200 ~ \$300** HWAC# 34776

some separation and foxing. (Prag Collection) **Est. \$200 ~ \$300** HWAC# 34776

**Lot # 1661** Nevada, Virginia City **Sutro Tunnel Company Stocks & Newspaper**

1874-1889 Lot of 3. 1) 1874 Adolph Sutro themed supplement to The Daily Independent featuring Sutro's mining lecture and illustrations. Foxing, folds, and tears. 2) Sutro Tunnel Company stock issued 1887. Co. now incorporated in California.

Issued for 100 shares to Walter Edwards. Signed by the vice-president and secretary. Vignette of Native American warrior and smaller mining vignette. Printed by NBN, NY. Not cancelled. 3) Company now named The Comstock Tunnel Co. and inc. in New York. Stock issued 1889 to Lee, Higginson & Co. for 100 shares. Signed by Theo. Sutro as president and Thayer as secretary. Not cancelled. Eagle vignette. Printed by The Homer Lee Bank Note Co., NY. (Prag Collection) **Est. \$120 ~ \$250** HWAC# 39031

