



Lot # 2499 African Lion Rug A large rug of an African Lion. Light brown on dark brown felt. Impressive! Killed prior to 1988, on display in a western museum since that time. Subject to the Endangered Species Act. This may only be sold within Nevada to bonafide Nevada residents. **Est. \$2,000 ~ \$4,000 HWAC# 43760**



Lot # 2500 African Lion Skull A skull of an African Lion. Broken jaw. Killed prior to 1988, on display in a western museum since that time. Subject to the Endangered Species Act. May only be sold within Nevada to bonafide Nevada residents. **Est. \$400 ~ \$800 HWAC# 43768**

2501 Alaskan Grizzly Bear Full Body Mount A full body mount of a grizzly bear from Alaska. 8 foot, standing on hind legs, open mouth. Killed prior to 1988, on display in a western museum since that time. This animal can be sold out-of-state or to foreign entities, but documentation is required according to the US Fish & Wildlife Service guidelines. Due to the size and weight of this item, local pick-up only. **Est. \$5,000 ~ \$10,000 HWAC# 43720**



Lot # 2502 Alaskan Moose Horns / Antlers Mount A mount of a Moose Antlers from an animal killed in Alaska. 50". Killed prior to 1988, on display in a western museum since that time. **Est. \$2,000 ~ \$4,000 HWAC# 43767**



Lot # 2503 Alaskan Moose Shoulder Mount (68" Trophy Class) Huge moose shoulder mount from Alaska. Trophy Class, 68", extra heavy antlers brow tines. Stunning piece! This may place it in the top ten record sizes. This animal was shot

prior to 1988 and previously on display in a Western museum. **Est. \$4,000 ~ \$8,000 HWAC# 43729**

Lot # 2504 Alaskan Polar Bear Full Body Mount Spectacular Alaskan polar bear full body mount. 10 foot, standing on hind legs, open mouth, arms out. "Ice" base. Killed prior to 1988, on display in a western museum since that time. This animal falls under the terms and conditions of the Marine Mammal Protection Act. It can only be sold in Nevada to a bonafide Nevada resident. Due to the size and weight of this item, local pick-up only. **Est. \$15,000 ~ \$30,000 HWAC# 43721**



TAXIDERMY



Lot # 2505 Anteater Full Body Mount A full body mount of an Anteater from British Honduras. Killed prior to 1988, on display in a western museum since that time. **Est. \$500 ~ \$1,000** HWAC# 43766

Lot # 2506 Arctic Timber Wolf

[See Photo Online](#)

Rug An Arctic Timberwolf Rug. Animal killed in Alaska. Open mouth, gray on black felt. Killed prior to 1988, on display in a western museum since that time. **Est. \$500 ~ \$1,000** HWAC# 43761



Lot # 2507 Arizona Javelina Half Body Mount Arizona Javelina half body mount and decorative base shot by renowned ore deposits geologist Tony Payne on July 14 1997. Measures 14" across, overall height 45", 15" out from the wall. Break in right leg at body joint. **Est. \$600 ~ \$800** HWAC# 43657



Lot # 2508 Baboon Shoulder Mount A shoulder mount of a Baboon from Kenya. Open mouth. Killed prior to 1988, on display in a western museum since that time. **Est. \$500 ~ \$1,000** HWAC# 43755



Lot # 2509 Black Rhino Shoulder Mount A shoulder mount of a black rhinoceros from Africa. Stunning. Killed prior to 1988, on display in a western museum since that time. Subject to the Endangered Species Act. Can only be sold within Nevada to bonafide Nevada residents. **Est. \$2,000 ~ \$4,000** HWAC# 43741

Lot # 2510 Black Sable Antelope Shoulder Mount A shoulder mount of a Black Sable Antelope from Zimbabwe. 38", heavy base. Killed prior to 1988, on display in a western museum since that time. **Est. \$600 ~ \$1,200** HWAC# 43742



Lot # 2511 Black Tail Deer Shoulder Mount Black Tail Deer shoulder mount shot by renowned ore deposits geologist Tony Payne in California Nov 4, 1997. The 5 point rack is 22", overall height 48", 26" out from the wall. **Est. \$700 ~ \$1,200** HWAC# 42716

Lot # 2512 Blue Tailed Gnu Horn & Skull Mount A

Blue Tailed Gnu Horn & Skull Mount made from an animal killed in Tanzania. Killed prior to 1988, on display in a western museum since that time. **Est. \$100 ~ \$300** HWAC# 43777



Lot # 2513 Boa Constrictor Skin Boa constrictor skin from an animal from South America. 22". Killed prior to 1988, on display in a western museum since that time. According to US Fish & Wildlife Service guidelines, foreign or interstate sales will require proper documentation. **Est. \$100 ~ \$200** HWAC# 43779

Lot # 2514 Bobcat Rug (extra large) An extra large Bobcat rug from an animal killed in North America. Open mouth, beige on brown felt. Killed prior to 1988, on display in a western museum since that time. **Est. \$200 ~ \$400** HWAC# 43763



Lot # 2515 Bobcat Rug (small) A small Bobcat rug from an animal killed in North America. Open mouth. Killed prior to 1988, on display in a western museum since that time. **Est. \$150 ~ \$300** HWAC# 43762



Lot # 2516 California Black Bear Neck & Head Mount California Black Bear neck and head mount shot by renowned ore deposits geologist Tony Payne in California June 11, 1963. The overall height 16", 19" out from the wall. **Est. \$600 ~ \$900** HWAC# 43656

Lot # 2517 Cape Buffalo Horn & Skull Mount A

mount of the horn and skull of a Cape Buffalo from Kenya. 42". Killed prior to 1988, on display in a western museum since that time. **Est. \$300 ~ \$600** HWAC# 43770



Lot # 2518 Cape Buffalo Shoulder Mount A shoulder mount of a Cape Buffalo from Kenya. 40" tip to tip. Killed prior to 1988, on display in a western museum since that time. **Est. \$600 ~ \$1,000** HWAC# 43751

Lot # 2519 Caribou Shoulder Mount Caribou shot by renowned Reno ore deposits professor Tony Payne in Alaska possibly in the 1960's. Antlers 31" tall, 26" across, the mount is 47" tall overall, and 43" out from the wall. Has the developed center horn. **Est. \$2,000 ~ \$4,000** HWAC# 43655



Lot # 2520 Caribou Shoulder Mount (Trophy Class) A shoulder mount of a caribou from Alaska. Trophy Class, 50" extra heavy long tines, deep shovels. Killed prior to 1988, on display in a western museum since that time. **Est. \$800 ~ \$1,600** HWAC# 43730

Lot # 2521 Chamois Shoulder Mount A shoulder mount of a Chamois from New Zealand. 10 2/8", left turn. Killed prior to 1988, on display in a western museum since that time. **Est. \$400 ~ \$700** HWAC# 43747



Lot # 2522 Chapman's Gazelle Shoulder Mount A shoulder mount of a Chapman's Gazelle from Kenya. 25", straight. Killed prior to 1988, on display in a western museum since that time. **Est. \$400 ~ \$800** HWAC# 43752



Lot # 2523 Chukar Full Body Mount A full body mount of a Chukar. The chukar is a game bird. Killed prior to 1988, on display in a western museum since that time. **Est. \$150 ~ \$300** HWAC# 43765



Lot # 2524 Coues Deer Shoulder Mount Coues shoulder mount shot by renowned ore deposits geologist Tony Payne in Mexico Sept 8, 1995. The rack is 14" wide", overall height 2"7, 17" out from the wall. **Est. \$700 ~ \$1,200** HWAC# 42717

Lot # 2525 Dall Sheep Shoulder Mount A shoulder mount of a dall sheep from Alaska. 28", straight. Killed prior to 1988, on display in a western museum since that time. **Est. \$3,000 ~ \$5,000** HWAC# 43736



TAXIDERMY



Lot # 2526 Dall Sheep Shoulder Mount Dall's Sheep shoulder mount shot by renowned ore deposits geologist Tony Payne in the Wrangle Range, Alaska in the 1960's. The rack is 23.5", overall height 39", 22" out from the wall. **Est. \$3,000 ~ \$5,000** HWAC# 42710

Lot # 2527 Desert Bighorn Sheep Shoulder Mount Desert Bighorn sheep shoulder mount shot by renowned ore deposits geologist Tony Payne in Nevada June 11, 1968. The rack is 2", overall height 26", 22" out from the wall. Broken tips, common of many Bighorn. **Est. \$2,000 ~ \$4,000** HWAC# 42711



Lot # 2528 Dik-Dik Full Body Mount A full body mount of a Dik-Dik from Kenya with base. Standing on four legs. Killed prior to 1988, on display in a western museum since that time. **Est. \$400 ~ \$700** HWAC# 43725



Lot # 2529 Dik-Dik Shoulder Mount Pair A shoulder mount of a Dik-Dik pair from Tanzania. Mounted on wood panel. Killed prior to 1988, on display in a western museum since that time. **Est. \$500 ~ \$1,000** HWAC# 43739



Lot # 2530 Duiker Shoulder Mount (Trophy Class) A shoulder mount of a Duiker from Tanzania. Trophy Class. Killed prior to 1988, on display in a western museum since that time. **Est. \$120 ~ \$250** HWAC# 43757



Lot # 2531 Eland Horns Mount A horn mount of Eland Horns made from an animal killed in Africa. Killed prior to 1988, on display in a western museum since that time. **Est. \$100 ~ \$300** HWAC# 43775

Lot # 2532 Elephant Foot Stool An Elephant

Foot Stool made from an animal killed in Africa. Killed prior to 1988, on display in a western museum since that time. According to US Fish & Wildlife Service, this item is subject to the Endangered Species Act. This can only be sold within Nevada to a bonafide Nevada resident. **Est. \$400 ~ \$800** HWAC# 43772



Lot # 2533 Elephant Tusks Horn Mount These elephant tusks are out of Africa. Two, 55" x 15." Bases approx. 35-40 pounds. Killed prior to 1988, on display in a western Museum since that time. This animal falls under the terms and conditions of the Endangered Species Act. It can only be sold in Nevada to a bonafide Nevada resident. **Est. \$5,000 ~ \$10,000** HWAC# 43726



Lot # 2534 Elk Shoulder Mount A shoulder mount of an elk or wapiti from Montana. 11 point, 37" width. Killed prior to 1988, on display in a western museum since that time. **Est. \$600 ~ \$1,200** HWAC# 43728



**Visit our online catalog at
www.Holabird Americana.com
for high resolution images of ALL LOTS**



Lot # 2535 Gemsbok / Oryx Shoulder Mount A shoulder mount of a Gemsbok / Oryx from Kenya. 24 1/8". Left ear misshapen. Killed prior to 1988, on display in a western museum since that time. **Est. \$600 ~ \$1,000** HWAC# 43743

Lot # 2536 Gerenuk Shoulder Mount A shoulder mount of a Gerenuk from Kenya. 15", right turn. Killed prior to 1988, on display in a western museum since that time. **Est. \$600 ~ \$1,200** HWAC# 43759



Lot # 2540 Green Turtle Carapace A Green Turtle Carapace from an animal killed in the Atlantic. Killed prior to 1988, on display in a western museum since that time. According to the US Fish & Wildlife Service, this item is subject to the Endangered Species Act. This can only be sold within Nevada to bonafide Nevada residents. **Est. \$500 ~ \$1,500** HWAC# 43771



Lot # 2537 Grants Gazelle Horns Mount A horn mount of a Grants Gazelle from an animal killed in Kenya. Killed prior to 1988, on display in a western museum since that time. **Est. \$100 ~ \$300** HWAC# 43773



Lot # 2541 Grevy's (Imperial) Zebra Hide A Grevy's Zebra hide from an animal killed in Kenya. Also known as the Imperial Zebra. Killed prior to 1988, on display in a western museum since that time. Subject to the Endangered Species Act. May only be sold within Nevada to a bonafide Nevada resident. **Est. \$600 ~ \$1,200** HWAC# 43764

[See Photo Online](#)

Gazelle Shoulder Mount A shoulder mount of a Grants Gazelle from Kenya. 21", right turn. Killed prior to 1988, on display in a western museum since that time. **Est. \$500 ~ \$900** HWAC# 43740

Lot # 2538 Grants Greater Kudu Shoulder Mount A shoulder mount of a Greater Kudu from Zimbabwe. 45", double twist. Killed prior to 1988, on display in a western museum since that time. **Est. \$700 ~ \$1,200** HWAC# 43749



Lot # 2542 Iguana Full Body Mount A full body mount of an Iguana made from an animal killed in South & Meso America. Killed prior to 1988, on display in a western museum since that time. According to US Fish & Wildlife Service guidelines, foreign or interstate purchases will require proper documentation. **Est. \$50 ~ \$150** HWAC# 43778



Lot # 2543 Impala Shoulder Mount An Impala horn mount from an animal killed in Kenya. Killed prior to 1988, on display in a western museum since that time. **Est. \$100 ~ \$300** HWAC# 43769

museum since that time. **Est. \$100 ~ \$300** HWAC# 43776

Lot # 2544 Impala Horn Mount A horn mount of Impala killed in Kenya. Killed prior to 1988, on display in a western



TAXIDERMY



Lot # 2545 Impala Shoulder Mount A shoulder mount of an Impala from Kenya. 25", right turn. Killed prior to 1988, on display in a western museum since that time. **Est. \$300 ~ \$500** HWAC# 43758

Lot # 2546 Jaguar Full Body Mount A full body mount of a jaguar from British Honduras with decorative base. Standing, open mouth. Killed prior to 1988, on display in a western museum since that time. This animal falls under the terms and conditions of the Endangered Species Act. It can only be sold in Nevada to a bonafide Nevada resident. **Est. \$2,000 ~ \$3,000** HWAC# 43722

Lot # 2549 Leopard Full Body Mount A full body mount of a Leopard from Tanzania with decorative base. Left turn. Killed prior to 1988, on display in a western Museum since that time. This animal falls under the terms and conditions of the Endangered Species Act. It can only be sold in Nevada to a bonafide Nevada resident. **Est. \$3,000 ~ \$6,000** HWAC# 42719

Lot # 2550 Lesser Kudu Shoulder Mount A shoulder mount of a Lesser Kudu from Kenya. 26", left turn. Killed prior to 1988, on display in a western museum since that time. **Est. \$700 ~ \$1,200** HWAC# 43750



Lot # 2551 Mexican Jaguar Rug with Head Mexican Jaguar Rug with head, shot in Mexico, April, 1963 by renowned ore deposits professor Tony Payne. The rug measures 54" long plus tail,, 57" wide, central width of the body is 50". This Jaguar rug is covered under the Endangered Species Act, and can only be sold

within Nevada to a bonafide Nevada resident. **Est. \$1,000 ~ \$2,000** HWAC# 43702

Lot # 2552 Mountain Lion Shoulder Mount A shoulder mount of a mountain lion from Nevada. Right turn. Killed prior to 1988, on display in a western museum since that time. Please note: this piece CANNOT be sold to California buyers. **Est. \$500 ~ \$1,000** HWAC# 43737



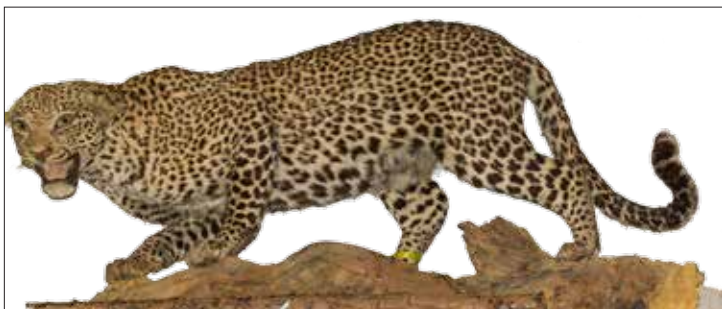
Lot # 2547 Javelina Full Body Mount A full body mount of a javelina from Arizona with decorative base. Killed prior to 1988, on display in a western museum since that time. Also known as peccaries, they are considered a New World pig. **Est. \$500 ~ \$1,000** HWAC# 43723



Lot # 2548 King Cobra Full Body Mount A full body mount of a King Cobra from Asia. Killed

prior to 1988, on display in a western museum since that time. According to US Fish & Wildlife Service, proper documentation is required if sold out-of-state or outside of the US. **Est. \$400 ~ \$800** HWAC# 42257

[See Photo Online](#)



Lot # 2554 North American Buffalo (Bison) Shoulder Mount North American Buffalo shoulder mount shot by renowned ore deposits geologist Tony Payne near Casper, Wyoming in the 1960's. The rack is 28", overall height 39", 43" out from the wall. **Est. \$1,500 ~ \$3,000** HWAC# 42718

Lot # 2553 Mule Deer Shoulder Mount A shoulder mount of a mule deer from California. 15 Point, 36", sneak position. Killed prior to 1988, on display in a western museum since that time. **Est. \$400 ~ \$800** HWAC# 43733



[See Photo Online](#)

[See Photo Online](#)

Lot # 2555 North American Elk Shoulder Mount North American Elk shoulder mount shot by renowned ore deposits geologist Tony Payne in British Columbia in the 1960's. The rack is 36" tall and 36" wide, six point, , overall height 65", 39" out from the wall. **Est. \$1,500 ~ \$2,500 HWAC# 42715**

Lot # 2556 North American Moose Shoulder Mount North American Moose shoulder mount shot by renowned ore deposits geologist Tony Payne on the Alaska peninsula in the 1960's. The rack is 49-50", overall height 45", 46" out from the wall. **Est. \$2,000 ~ \$4,000 HWAC# 42714**

[See Photo Online](#)

Lot # 2562 Rocky Mountain Bighorn Sheep Shoulder Mount A shoulder mount of a Rocky Mountain bighorn sheep from Wyoming. 34", left turn, extra long hair. Killed prior to 1988, on display in a western museum since that time. **Est. \$2,000 ~ \$4,000 HWAC# 43735**



Lot # 2563 Rocky Mountain Billy Goat Shoulder Mount A



Lot # 2557 North American Pronghorn Antelope Shoulder Mount North American Pronghorn Antelope, shot in Red Rock, Nevada, August 14, 1995 by renowned ore deposits professor Tony Payne. The rack measures 12" wide, 27" high, 23" from wall. **Est. \$300 ~ \$600 HWAC# 43701**



shoulder mount of a Rocky Mountain billy goat from the Yukon. 9 1/2." Killed prior to 1988, on display in a western museum since that time. **Est. \$400 ~ \$800 HWAC# 43738**

Lot # 2558 Phillips Gazelle Shoulder Mount A shoulder mount of a Phillips Gazelle from Kenya. 22",



straight. Killed prior to 1988, on display in a western museum since that time. **Est. \$400 ~ \$800 HWAC# 43746**

Lot # 2564 Rocky Mountain Goat Shoulder Mount Rocky Mountain Goat, shot in Canada, 1964 by renowned ore deposits professor Tony Payne. The rack measures 8" wide, 22" high, 26" from wall. **Est. \$750 ~ \$1,500 HWAC# 43700**



Lot # 2565 Sloth Bear Full Body Mount A full body mount of a sloth bear from India with decorative base. Killed prior to 1988, on display in a western

[See Photo Online](#)

Lot # 2559 Phillips Gazelle Shoulder Mount A shoulder mount of a Phillips Gazelle from Kenya.

22", straight. Killed prior to 1988, on display in a western museum since that time. **Est. \$300 ~ \$600 HWAC# 47346**

Lot # 2560 Pronghorn Antelope Shoulder Mount A shoulder mount of a pronghorn antelope from Wyoming. 12." Killed prior to 1988, on display in a western museum since that time. **Est. \$250 ~ \$500 HWAC# 43732**

[See Photo Online](#)



Lot # 2561 Rocky Mountain Bighorn Sheep Shoulder Mount Rocky Mountain Bighorn Sheep, shot in Colorado, 1964 by renowned ore deposits professor Tony Payne. The rack measures 19" wide, 28" high, 22" from wall. **Est. \$2,000 ~ \$4,000 HWAC# 42712**



museum since that time. If sold outside the United States, must have permits per US Fish & Wildlife Service. **Est. \$5,000 ~ \$10,000 HWAC# 43727**

TAXIDERMY



Lot # 2566 Stone Sheep Shoulder Mount Stone Sheep, shot in Canada in the 1960's, by renowned ore deposits professor Tony Payne. The rack measures 24" wide, 31" high, 20" from wall. **Est. \$2,000 ~ \$4,000** HWAC# 42713

Lot # 2567 Stone Sheep Shoulder Mount A shoulder mount of a stone sheep from

Lot # 2571 Wallaby Full Body Mount A full body mount of a wallaby from Australia with base. Standing on hind legs, open mouth. Killed prior to 1988, on display in a western museum since that time. **Est. \$800 ~ \$1,600** HWAC# 43724



the Yukon. 33 1/8." Killed prior to 1988, on display in a western museum since that time. **Est. \$2,000 ~ \$4,000** HWAC# 43734



Lot # 2572 Warthog Shoulder Mount A shoulder mount of a Warthog from Kenya. Straight. Killed prior to 1988, on display in a western museum since that time. **Est. \$350 ~ \$700** HWAC# 43753



Lot # 2568 Thomson's Gazelle Shoulder Mount A shoulder mount of a Thomson's Gazelle from Tanzania. 12." Killed prior to 1988, on display in a western museum since that time. **Est. \$300 ~ \$600** HWAC# 43744

Lot # 2573 Western Mule Deer Shoulder Mount Western Mule Deer shoulder mount shot by renowned ore deposits geologist Tony Payne in Nevada April 14 1958. The rack is 4 point 14" , 14 " wide, 13 High, overall height 31" , 23" out from the wall. **Est. \$250 ~ \$400** HWAC# 43659



Lot # 2569 Thomson's Gazelle Shoulder Mount A shoulder mount

of a Thomson's Gazelle from Tanzania. 14." Killed prior to 1988, on display

in a western museum since that time. **Est. \$300 ~ \$600** HWAC# 43745



Lot # 2570 Topi Shoulder Mount A shoulder mount of a Topi from Kenya. 12 1/2", right turn. Killed prior to 1988, on display in a western museum since that time. **Est. \$400 ~ \$700** HWAC# 43748



Lot # 2574 White-Tailed Deer Shoulder Mount White Tail Deer shoulder mount shot by renowned ore deposits geologist Tony Payne in Texas in the fall of 1996. The rack is 5 points, 18" , overall height 31" , 26" out from the wall. **Est. \$700 ~ \$1,200** HWAC# 43658



Lot # 2575 White-Tailed Deer Shoulder Mount A shoulder mount of a white-tailed deer from Wyoming. 18", 6 Point. Killed prior to 1988, on display in a western museum since that time. **Est. \$700 ~ \$1,200** HWAC# 43731





Lot # 2576 Wildebeest Horns Mount A mount of Wildebeest Horns made from an animal killed in Tanzania. Killed prior to 1988, on display in a western museum since that time. **Est. \$100 ~ \$300** HWAC# 43774

Lot # 2577 Wildebeest Shoulder Mount A shoulder mount of a Wildebeest from Tanzania. 23 2/8", right turn. Killed prior to 1988, on display in a western museum since that time. **Est. \$400 ~ \$700** HWAC# 43756



Lot # 2578 Zebra Shoulder Mount A shoulder mount of a Zebra from Kenya. Killed prior to 1988, on display in a western museum since that time. **Est. \$1,300 ~ \$2,000** HWAC# 43754

Lot # 2579 California, Bodie Bodie & Benton Railroad Letter to Virginia & Truckee Railroad 1885 Very rare letter on superintendent's office letterhead. Dateline Bodie, Cal. Aug 18th, 1885. Addressed to Hume Yerington, General Purchasing Agent for the Virginia & Truckee Railroad (and son of Henry Yerington). Thomas Holt, superintendent for the railroad, is requesting the state of their account with the famous Comstock line. Marked answered. Folds, toning. The Bodie & Benton Railway & Commercial Company formed in 1882 out of the Bodie Railway & Lumber Company, which had formed in 1881 to build a railroad for the purpose of getting wood to Bodie. The company principals were brothers Seth and Daniel Cook, R. N. Graves, and Henry Yerington, who ran the Virginia and Truckee Railroad. This railroad is the only small gauge railroad in California that does not hook up to any other railway in the state. Its southern terminus was at Mono Mills and was never completed as envisioned to Benton. The track ran 32 miles from Bodie to Mono Mills. They hired Thomas Holt to supervise the construction. He hired many Chinese laborers, as they were familiar with building rail lines in the U. S., but Holt ended up having severe labor problems because of hiring the Chinese workers. When white laborers threatened violence against the Chinese laborers, Holt had the Chinese workers transported on the steamer Rocket out to Paoha Island on Mono Lake with provisions to ride out the anger! It is no surprise to



see communication and business between the V&T and Bodie. Bodie was booming as the Comstock was fading. The railway ended operations in 1917. It is the subject of a recent book, "Railroad in the Sky." 8" x10.5" **Est. \$150 ~ \$250** HWAC# 43044

Lot # 2580 California, Bodie Bodie & Benton Railway and Commercial Company Bond, 1886 Series B, bond no. 191 issued for \$1000 in gold coin. The vignette is of a train hauling lumber through the wooded mountains. There are felled trees all around a lumberjack's cabin. Excellent condition. The Bodie and Benton Railway Company formed in 1882 out of the Bodie Railway & Lumber Company, which had formed in 1881 to build a railroad for the purpose of getting wood to Bodie. The company principals were brothers Seth and Daniel Cook, R. N. Graves, and H. M. Yerington, who ran the Virginia and Truckee Railroad. This railroad is the only small gauge railroad in California that does not hook up to any other railway in the state. Its southern terminus was at Mono Mills and was never completed as envisioned to Benton. They hired Thomas Holt to supervise the construction. He hired many Chinese laborers, as they were familiar with building rail lines in the U. S., but Holt ended up having severe labor problems because of hiring the Chinese workers. People in the mid 1800s were very xenophobic about Chinese laborers. The U. S. government had just enacted the Chinese Exclusion Act in 1882 to stem the tide of immigration from China, but the hostility towards the group did not subside. In 1893 the company reverted to its former name [Ref: Myrick, David F, The Railroads of Nevada and Eastern California, 1992]. This bond is signed by H. M. Yerington as President, but the Secretary's name is illegible. There are punched holes through the signature lines, at the top and through the coupons. **Est. \$400 ~ \$600** HWAC# 37506



Lot # 2581 California, Fort Bragg California Western Railroad & Navigation Company Stock Certificate 1905 Better known as the Skunk Railroad it traveled from Fort Bragg to Willits. This is CERTIFICATE # 2. Made out to Duncan McNee. Signed by Charles Weller secretary and MN McIntosh president. Signed on back by McNee. Three months after getting the stock he transferred it to the Union Lumber Company. The California Western connected to the Union Lumber Company. McNee, Weller, and McIntosh were all on the Board of Directors of the railroad. (George Garfield & Robert Greenawalt Railway Express and Wells Fargo Collection) **Est. \$120 ~ \$200** HWAC# 41730

Lot # 2582 California, Ludlow Tonopah & Tidewater blank documents c1930's Nine Documents. Includes unused 1933-34 Pass. Number 642. Pristine Condition. Also 1) Mechanical Department Time Sheet, Form 502. Large size. 2) Office of Vice President, FM Jenifer. Form 194. 3) Changes in Salary. Form 249. 4) Request for discharge check. Form 21. 5) Tonopah & Tidewater billhead. Form 291. 6) Identification ticket. Form 56. 7) Death Valley RR Company billhead.

RAILROAD, STAGE, & STEAMSHIP

[See Photo Online](#)

Wilmington, California. Form 277e. 8) Store Department Form 237. (George Garfield & Robert Greenawalt Railway Express and Wells Fargo Collection) **Est. \$100 ~ \$150** HWAC# 41706



Lot # 2583 California, Ludlow **Tonopah & Tidewater Lock with Key** This is an authentic Tonopah & Tidewater lock with one key that came directly from the Greenawalt family. T-T

RR etched on lock mechanism. Lock was passed down from father (a former employee of the T&T) to son in younger years. It is an Adlake lock. 3.75 x 2.75". Includes short change. In fabulous working condition. (George Garfield & Robert Greenawalt Railway Express and Wells Fargo Collection) **Est. \$1,000 ~ \$2,000** HWAC# 41708

Lot # 2584 California, Ludlow **Tonopah & Tidewater: A Day in the Life of** 1932 What happened on the Tonopah & Tidewater on July 26, 1932? This sheet (20 x 15") has everything you need to know: the conductor, the engineman, the time of departure (2:30) from Death Valley, the time of arrival in Ludlow (8:30), weather at key stations, extraordinary or unusual circumstances (heavy rain at Rasor, black clouds at Ludlow, etc), and all wires that came in. (George Garfield & Robert Greenawalt Railway Express and Wells Fargo Collection) **Est. \$120 ~ \$200** HWAC# 41707



Lot # 2585 California, Nevada City **Extremely Rare Nevada City Narrow Gauge Lantern** Has shop made tag. The RR operated from 1874 to 1942. The track ran a little more than 20 miles from Nevada City to Colfax where it would connect to the Central Pacific Railroad. Over its 66 year history the little narrow gauge hauled more than \$200,000,000 in gold. Was definitely used. Has some dents and dings, but overall in nice condition. Glass has a large crack - about 5" near the top. **Est. \$3,000 ~ \$4,000** HWAC# 42675

Lot # 2586 California, Nevada City **Two Nice Turn-of-the-Century Nevada City Railroad Photographs**

Two nice turn of the century railroad photos from the Nevada City area. One is a 4" x 8.5" mounted photo of a railroad cut on the Nevada

Narrow Gauge Railroad from Colfax to Nevada City circa 1900. The second is a matted photograph of a train wreck undated but about 1910. 8" x 10". Please inspect. **Est. \$200 ~ \$300** HWAC# 43652



Lot # 2587 California, Santa Barbara-Gaviota **Santa Barbara-Gaviota Railroad Nails** 10 iron date nails are mounted in wood and 7

are loose. Probably type 03. Date nails were tagging devices utilized by railroads to visually identify the age of a railroad tie. Different railroads used different sized nails with either alpha or numerical markings. An example would be a Southern Pacific Railroad nail with the marking "01" stamped on the head of the nail. The "01" would identify the nail as being hammered into a railroad tie in the year 1901. **Est. \$100 ~ \$200** HWAC# 41460

Lot # 2588 California, Venice **L. A. Thompson Railroad Badge (now known as the "Roller Coaster")** c1920 The L. A. Thompson was a tourist railroad. It had a restaurant in the middle of the run. This is badge 51. The back has no markings. Lamarcus Adna Thompson was born in Jersey, Ohio on March 8th, 1848. The man would become known as the "father of gravity." He would build the first roller coaster in Pennsylvania called the Mauch Chunk Switch Back which was an 18 mile, mostly downhill course that featured a 2,300 foot, 665 foot high drop at the end. After opening another in Coney Island, he headed to California. The L.A. Thompson in Venice combined the thrill of his first roller coasters with visual effects including artificial hills, lights, and replicas of temples. (George Garfield & Robert Greenawalt Railway Express and Wells Fargo Collection) **Est. \$200 ~ \$400** HWAC# 41715

[See Photo Online](#)



Lot # 2589 California **Framed Photograph of Early Timber Railroad** Nice shot of timber railroad engine with timber cars behind it in an active logging area, probably near Grass Valley / Nevada City. Frame is period and dates to about 1890 to 1900. The photo measures about 6 x 8". **Est. \$150 ~ \$300** HWAC# 43650

Lot # 2590 California **Three Central Pacific Railroad in California Photographs** Three photographs involving the Central Pacific



Railroad in California. One is a Tabor mounted photo of the CPRR depot in Oakland on cabinet card, Tabor number 423. Two is a stereoview of the Bloomer Cut near Auburn with the train in the center of the cut. Watkins photo number 231. The third photograph is the interior view of a snow shed at Donner, Houseworth photo number 1303. **Est. \$200 ~ \$300 HWAC# 43649**



Lot # 2591 California The Pacific Tourist, An Illustrated Guide (1885)
1885 The Pacific Tourist, An Illustrated Guide to Pacific R. R. California and Pleasure Resorts across the Continent", F. E. Shearer, Editor. Adams and Bishop, Publishers, New York, 1885. Soft leather cover, embossed, engraved, 9" x 7". 372 pp. Beautifully illustrated. **Est. \$100 ~ \$200 HWAC# 43416**



Lot # 2596 Colorado, Denver Interline Way Bills for Denver Northwestern & Pacific Railway
1910 "Copy Interline Way Bills Jan 10th 1910 to ___" hand-written on cover. Waybills primarily routing to Denver, CO and Kansas City, MO. The Denver, Northwestern & Pacific Railway Company was originally established in 1902 by David H. Moffat and associates after Denver was bypassed by the Union Pacific and Denver Rio Grande Western Railroads. The Denver and Salt Lake Railroad was formed in 1913 after the DNW&P was put into receivership in 1912. Waybills move with a shipment showing its consignor, consignee, origin and destination, description of goods including their weight and freight. Prepared by the shipping company for its internal record and control. Letterpress book, hardcover, about 100 pages with up to 6 entries per page, measures 16" x 19". Stains and water damage on front cover, with spine starting to separate from text block. **Est. \$150 ~ \$500 HWAC# 21650**

Lot # 2592 Colorado, Cripple Creek Cripple Creek Railroad Booklets, Report & Contract 1899-1934 Lot of four good Cripple Creek pieces. 1) 1899 contract between the Canon City & Cripple Creek RR, Florence & Cripple Creek RR, and Golden Circle RR. 6 pages. 2) The Short Line Blue Book of the Colorado Springs & Cripple Creek Railroad. June, 1905. 84 pages of ads, populations, time tables, altitudes, scenery, and illustrations. 3) 13th annual report of the Cripple Creek Central Railway Company. 1934. 4) Pike's Peak by Rail. The Cog Wheel Route. Manitou & Pikes Peak Railway. 16 pages. **Est. \$80 ~ \$500 HWAC# 27512**



Lot # 2597 Colorado, Denver First Mortgage and Supplemental Indenture of The Denver, Memphis and Atlantic Railroad Company July 1, 1886 To the Farmer's Loan and Trust company. the Denver, Memphis and Atlantic Railroad was constructed only in the state of Kansas and was sold to the Missouri Pacific during construction. 1) First Mortgage. Booklet. 22 pages. 6" x 9". Binding worn. 2) Supplemental Indenture. Booklet. 6 pages. 6" x 9". Both copies stamped "Property of White & Kemble" **Est. \$20 ~ \$400 HWAC# 27339**



[See Photo Online](#)

Lot # 2593 Colorado, Denver Rio Grande Western Traveler Information Booklets & Fishing & Hunting Guides Group of five items, including: 1) Two copies of "What may be Seen Crossing the Rockies En-Route

Between Ogden Salt Lake and Denver." Softcover. 36 pages filled with illustrations and maps. 2) Three copies of "Hunting and Fishing Places Located on Line of the Rio Grande System. Trout Season Opened June 1st and Continues until October 31st." S.K. Hooper, Gen. Pass. Agent. **Est. \$50 ~ \$400 HWAC# 27355**

Lot # 2594 United States, Rio Grande Southern Railroad Patented Spike In original cardboard that identifies spike as a unique Jeffery spike. (George Garfield & Robert Greenawalt Railway Express and Wells Fargo Collection) **Est. \$50 ~ \$100 HWAC# 41714**

[See Photo Online](#)

Lot # 2595 Colorado, Denver The Denver & Salt Lake Railroad Co. Letterpress Book c1914 Local W-B Sept. 16th 1915 - November 14th 1915 hand-written on cover. Waybills routing to Omaha, NE; Denver, CO; Greeley, CO; Milner, CO; and Craig, CO. The Denver and Salt Lake Railroad was formed in 1913 after the Denver, Northwestern and Pacific Railway was put into receivership in 1912. The DNW&P was originally established by David H. Moffat and associates after Denver was bypassed by the Union Pacific and Denver Rio Grande Western Railroads. Waybills move with a shipment showing its consignor, consignee, origin and destination, description of goods including their weight and freight. Prepared by the shipping company for its internal



Lot # 2598 Colorado, Telluride Rio Grande Southern Wax Sealer Original wax sealer from Telluride, Colorado. Brass. Great condition. The RGS was founded in 1889 by Otto Mears, and construction began in 1890 from Ridgway (north of Ouray) and Durango (south of Silverton) to go around the most rugged part of the San Juan Mountains and also reach the mining towns of Rico and Telluride. The line was completed only a little time before the Silver Panic of 1893 which resulted in most of the mines closing overnight and the railroad losing most of its traffic. The railroad struggled to survive through the Great Depression, and was finally closed in 1951. (George Garfield & Robert Greenawalt Railway Express and Wells Fargo Collection) **Est. \$400 ~ \$1,000 HWAC# 41716**

RAILROAD, STAGE, & STEAMSHIP



Lot # 2599 Colorado Colorado Railroad Pamphlets incl. Wine List & 1892 Map

Lot of five railroad publications: Wine List from Silverton Northern Railroad; map entitled "The Natural Resources of Colorado by the Denver & Rio Grande System" (1892); "Scenes from the

Camera" by Missouri Pacific Railway and Iron Mountain Route (1902); "Colorado" by Missouri Pacific Lines; and "The Grand River Valley" by the Denver and Rio Grande Railroad. **Est. \$80 ~ \$300 HWAC# 37941**

Lot # 2600 Colorado Four Colorado Railroad Booklets 1909-1950 1)

Topographical Map of Rocky Mountain National Estes-Park and Environs. (Union Pacific). 2) Rocky Mountain Railroad Club, 1950. 3) The Travelers Time-Saver and Trans-Missouri Railway Guide for Iowa, South Dakota, Nebraska, Wyoming, Missouri, Minnesota, Kansas, and Colorado. 1909. Blue Book. 4) Colorado by Rail, Stage and Auto. c1910. **Est. \$20 ~ \$200 HWAC# 27505**

[See Photo Online](#)

Lot # 2601 Colorado Kansas and Colorado Railroad Company Supplemental Mortgage 1887

With the Mercantile Trust Company. Property of White & Kemble. 5 pages. Possibly only one known. **Est. \$20 ~ \$200 HWAC# 27514**

[See Photo Online](#)

Lot # 2602 Colorado Kansas Pacific Railway Report & Booklets 1868-1877

Lot of 3 early pieces. 1) 1868 Second Annual Report to the Board of Directors. 32 pages. 2) Argument submitted on behalf of the Kansas Pacific Railway Co. before the Secretary of the Interior and the Attorney General of the U. S. Artemas H. Holmes, counsel. 60 pages. Missing front cover. 3) Memorial of the Committee of Nine of the First Mortgage Bondholders. 1878. To Carl Schurz, secretary of the interior. Booklet is coming apart. The last two must be about regulating prices. **Est. \$500 ~ \$1,000 HWAC# 27507**



Lot # 2603 Colorado Stock Certificate and First Mortgage of the Northwestern Terminal Railway Company

Lot of two. 1) Unissued pictorial Stock Certificate No. 89. 2) First Mortgage to The Mercantile Trust Company, July 1st, 1906. 60 pages. 8" x 10". Bound. Writing and stain on cover. Water stain on one corner of pages. **Est. \$20 ~ \$200 HWAC# 27344**

[See Photo Online](#)

Lot # 2604 Colorado Various Papers and Map of the Wichita and Colorado Railway

1) Letter of Information and Map of Railroad. 8 1/2" x 11". 2) Satisfaction, Release and Discharge of First Mortgage 6 Pages. 8 1/2" X 11" 3) Letter from the Missouri Pacific about routes. 4) Letter form the Union Trust Company about conversion of coupons. **Est. \$20 ~ \$200 HWAC# 27343**

[See Photo Online](#)

[See Photo Online](#)

Lot # 2605 Colorado Wichita & Colorado Railway Co. First Mortgage 1886

Two copies of a pamphlet sized first mortgage to Russell Sage and George J. Gould. The railway only operated from 1885 until 1891. 6 x 9". The second copy has a typewritten letter of extension dated 1912. **Est. \$20 ~ \$200 HWAC# 26159**

[See Photo Online](#)

Lot # 2606 Connecticut Three Eagle Manufacturing Unmarked Locks

Three different Eagle Lock Company, Terryville, Ct. . 1) 'U' stamped on top. Small key. 2) Common size, but with original key stamped 'Eagle.' 3) Skinnier key marked '555'. **Est. \$90 ~ \$250 HWAC# 22171**



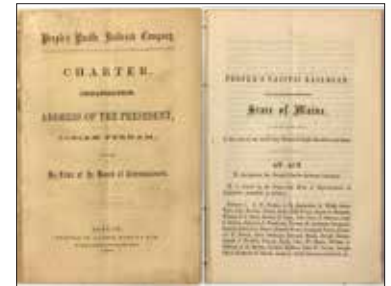
Plant in Gary. Both are part of a turntable complex. Fragile. **Est. \$20 ~ \$300 HWAC# 23519**

Lot # 2607 Indiana, Gary Chicago, Rock Island & Pacific Railway Drawings 1919

Two drawings on waxed linen 30 x 24" of plans within the American Bridge

Lot # 2608 Kansas People's Pacific Railroad Company, Charter 1860

Paper booklet (8.75" x 5.5"), cover missing, 24 pp. Published by People's Pacific Railroad Company, Boston; printed by Alfred Mudge & Son, 1860. Full title reads: People's Pacific Railroad Company. charter; organization, address of the President, Josiah Perham, with the By-Laws of the board of Commissions. an act to incorporate The People's Pacific Railroad Company. To build a railroad "from a point on the Missouri River; between the mouth of the Platte River on the north, and the Kansas River on the south, and on such route from Missouri river, through Utah, to the city of San Francisco on the Pacific Coast, and as near as practicable to the present traveled mail route, or by such route as the said corporation shall deem expedient and for the public interest..." **Est. \$80 ~ \$400 HWAC# 26527**



[See Photo Online](#)

Lot # 2609 Maine The Annual Report of the Knox & Lincoln Railroad Co.

1875 Booklet. Railroad ran from Bath to Rockland, Maine and connected with the B & M and the Maine Central. 20 pages. 5 1/2" x 9" Some discoloration and wearing on cover. **Est. \$20 ~ \$100 HWAC# 27341**

Lot # 2610 Michigan Lakeshore & Michigan Southern Railway Spoon 1901

Lakeshore Michigan Southern Railway Spoon from the 1901 Pan American Expo. **Est. \$60 ~ \$90 HWAC# 42014**

[See Photo Online](#)



Lot # 2611 Minnesota Northwest Dispatch Fast Freight Company Stock Certificate 1895 This railroad stock is number 21 for 500 shares issued to Thomas Tomlinson and signed by president Joseph Walker Jr. Nice industrial railroad vignette.

“The cars of the Eureka Transportation Company fifteen hundred in number have been purchased in the interest of the Green Bay, Winona & St Paul Railroad Company and will be operated hereafter in the fast freight line known as the Northwest Dispatch Fast Freight Line via Frankfort and Kewaunee. Mr Joseph Walker Jr, vice president of the Green Bay Winona & St Paul, is the president of this company...This equipment will facilitate the shipments of freight without break of bulk from Minneapolis and St Paul via this route across Lake Michigan by the new transport boats of the Toledo, Ann Arbor & North Michigan Railroad Company to the seaboard and from the seaboard to the Northwest in the same manner.” [The Railway and Corporation Law Journal, Volume 12, 1892] **Est. \$175 ~ \$400 HWAC# 37222**

Lot # 2612 Nevada, Eureka Rare Eureka Nevada Railroad Company Stock Certificate 1923 Number 16 to George Whittell Jr for 1 share in 1923. Whittell took over the Eureka



& Palisade Railroad in 1911 and had the quiet railroad up and running by 1912 under a new name - the Eureka Nevada Railway Company. George Whittell Jr. was born in 1881 to one of San Francisco’s wealthiest families. He never worked a day in his life, instead choosing to live off the interest generated by the millions he inherited from his parents, George Sr. and Anna Whittell. His enormous assets allowed him to purchase the Nevada side of Lake Tahoe where he built the Thunderbird Lodge in the 1930s. Railroads of Nevada Volume 1 by Myrick and Online Nevada Encyclopedia. (George Garfield & Robert Greenawalt Railway Express and Wells Fargo Collection) **Est. \$2,300 ~ \$3,000 HWAC# 41731**



Lot # 2613 Nevada, Goldfield Bullfrog Goldfield Railroad Ticket Dater In 1906 just a few short years after gold was discovered in Goldfield, the small desert area became the site of the last great gold rush in Nevada’s

history. While the mining camp soon grew into a booming town, railroads were needed to help support the productive mining economy. Eyeing potential in the Bullfrog district, John Brock of the Tonopah and Goldfield Railroad announced the formation of another railroad company, the Bullfrog Goldfield. This one would be a nominal extension of the Tonopah and Goldfield Railroad, and would extend those lines south from Goldfield into the Bullfrog District. While work began in 1906, it wasn’t until Spring of 1907 that the final spike was driven in Goldfield. The promises of the mines soon began to fail however in 1910, and by 1928 the Railroad was abandoned. This ticket dater is dated June 12, 1924 and was manufactured by Independent M.F.G. Co. and listed it lists the item as a Centennial Dater. There is some wear on the paint used to detail the dater. Sources: Railroads of Nevada and Eastern California: The Southern Roads by David F. Myrick **Est. \$500 ~ \$1,000 HWAC# 41413**



Lot # 2614 Nevada, Virginia City Virginia & Truckee Railroad: Sharon, Ralston, Mills, Barren and Bell - this stock certificate has it all! 1869 One of the best ever to reach the market! Stock number 30 of 500 shares issued to Warren Barron on June 21, 1869. Signed by William Sharon as president and F(redrick) A. Trittle as secretary. Back is endorsed by W. C. Ralston, D. O. Mills, and Thomas Bell as executors of the will of William Barron. Certificate is in near perfect condition. Includes a 25 cent Nevada Revenue Stamp and 25 cent U. S. Revenue Stamp. These are all the major players in the Comstock at this time. Ralston was the founder of the Bank of California which was the financial giant that financed the V&T. William Sharon was his agent and president of the V&T. Bell, Sharon, Ralston, and Mills were 4 of the 5 Directors for the V&T. Mills was the first president of the Bank of California and his estate was the beginning of Millbrae. Bell (with Mills) would also own the Eureka & Palisade Railroad. All were financial giants in San Francisco. The V&T is was the richest short line railroad and is still on of the most legendary in the United States. (History of Nevada by Thompson; Popular Science, October 1896; Silver Short Line by Wurm & Demoro)

TIMELINE:

- 1864: The ores of the Comstock were worked out (first strike).
- 1865: William Sharon and William Ralston (Bank of California) decided to gain control of the Comstock by advancing more loan money to mills and taking control when they couldn’t make their payments.
- 1867, June: Ralston, Sharon, Alvinza Hayward, D. O. Mills, Thomas Bell, Charles Bonner, William Barron, and Thomas Sunderland made their play to control the Comstock through their mills. They became known as the ‘Bank Crowd.’
- 1868: When asked if a railroad could be built to Virginia City, Sharon and Ralston immediately began working on it.
- 1869: The V&T reaches Gold Hill.
- 1870: The V&T is completed. (George Garfield & Robert Greenawalt

RAILROAD, STAGE, & STEAMSHIP

Railway Express and Wells Fargo Collection) Est. \$1,000 ~ \$1,500
HWAC# 41710



Lot # 2615 Nevada, Virginia City **Virginia & Truckee Railroad Stock Certificate Issued to Bonner, Signed by Sharon** 1869 50 shares to Charles Bonner in 1869. Signed by president William Sharon and Secretary Trittle. Names are hole cancelled. 25c United States Revenue Stamp and a 25c Nevada Revenue Stamp are on the left side. Bonner was an early superintendent of the Savage Mine. Later he was the mining supervisor of Gould & Curry in Virginia City. Bonner is noted to have a more accurate estimate of processing ore at the Gould & Curry Mill an elaborate structure built in the shape of a Greek cross. The mill was initially supposed to process ore using the Veatch process at roughly \$38/ton. It was a failure and the mill was later reconstructed at a cost of \$560,000 (Holabird). History of the state of California by Guinn. (George Garfield & Robert Greenawalt Railway Express and Wells Fargo Collection) Est. \$1,000 ~ \$2,000 HWAC# 41732



Lot # 2616 Nevada, Virginia City **Virginia & Truckee Railroad Stock Certificate: Ralston and Sharon Signatures** 1869 Number 21 for 500 shares to W. C. Ralston on June 21, 1869. Signed by secretary Trittle and president Ralston. Cancelled with red pen on August 18, 1870 leaving the signature intact. 25c Nevada Revenue Stamp and 25c United States Revenue Stamp. Ralston Signature on back. Ralston and Sharon were the driving forces behind the Bank of California on the Comstock. Owning most of the major mills, the major mines, and the V&T; they were the financial giants in Nevada, and hence, became some of the rich and powerful of San Francisco. Light folds and some paper glued to back, but otherwise in great condition!!! Certainly one of the best V&T stock certificates on the market today! Est. \$1,500 ~ \$2,500 HWAC# 41734

Lot # 2617 Nevada, Virginia City **Virginia & Truckee Railroad Bond: William Sharon Signature** 1874 Issued to Thomas Bell for \$1000 in 1874. Bell was named to the Board of Directors on March 5, 1868. Signed by William Sharon as president. A good, clear, undamaged signature. Geo. A. King signed as secretary. Vignette of mill site



at top center. Black border. 24 coupons attached to bond. Cancelled by punch holes on signature lines of bond and coupons. Printer - Litho. Britton, Rey & Co., S.F. Bond is 12 x 17 excluding coupons. In 1867, the Bank of California, represented by William Sharon, organized the Union Milling & Mining Co. The bank exerted an enormous influence on Comstock affairs for the next ten years. That company built the V&T RR from Carson City to the Comstock in 1869, to compete with Adolph Sutro famous tunnel which began work the same year. With the 1849 Gold Rush, Sharon traveled to California where he engaged in business and real estate, but he lost his earnings in stock speculation. Despite his failure, the newly formed Bank of California selected Sharon in 1864 to represent its interests on the Comstock. He arrived during a mining slump when businesses needed loans to survive. Banks were lending money at three to five percent interest per month. Sharon offered funds at two percent per month, undercutting competition. Customers flocked to the Bank of California. When loans defaulted, Sharon foreclosed on mines and mills. His mills lowered prices, taking business from his borrowers, driving even more properties into his grasp. See the rest of the story online. Est. \$400 ~ \$600 HWAC# 41810



Lot # 2618 Nevada, Virginia City **Second Virginia & Truckee Railroad Bond Signed by William Sharon** 1874 Indebted to Thomas Bell of San Francisco and one of the Board of Directors. Signed by William Sharon and J. D. Fry. Number 572 to J. D. Fry. Sharon is well known in Nevada

circles as the agent of the Bank of California in Virginia City. Fry was a San Francisco financier who partnered with Sharon on Comstock projects. He also president of the Hamilton water company in White Pine. Coupons remaining are hole cancelled. Hole cancelled, but Sharon signature is mostly intact. (George Garfield & Robert Greenawalt Railway Express and Wells Fargo Collection) Est. \$400 ~ \$800 HWAC# 41728

See Photo Online

Lot # 2619 Nevada, Virginia City **Third Virginia & Truckee Railroad Bond Signed by Sharon** 1874 See previous lot for information on signatures. (George Garfield & Robert Greenawalt Railway Express and Wells Fargo Collection) **Est. \$400 ~ \$600 HWAC# 41729**

Lot # 2620 Nevada, Virginia City **Virginia & Truckee Railroad Lantern** Original V & T railroad globe, cracked with unmarked lantern patented Dec. 26 '98. "C.T. Ham Mfg. Co. **Est. \$400 ~ \$800 HWAC# 42223**

See Photo Online



Lot # 2621 Nevada, Virginia City **Metal Replica of the Engine 'Reno'** This is a real show piece and would look great on any shelf, mantel or display. Includes a metal tender. 22.5" long from cow catcher to tender. Smoke stack rises 7' above the ground. Named after the well-known city in Nevada, the Reno was built for the Virginia & Truckee Railroad by Baldwin in 1872. The V&T was a standard-gauge line in Nevada that primarily hauled gold and silver ore, which is what the Reno was put to work doing. After several decades of work, Reno started a career in pictures. Perhaps the most famous of these was Union Pacific in 1937. The locomotive is a classic example of the American 4-4-0 and, along with the engines at Promontory Point, Utah, is among the most famous of its class. The engine exists today and was most recently featured in the film Wild, Wild West (1997). Aster released the Reno in 1976. It was the company's third locomotive, after the Schools and the JNR Mogul. By Astor Model Locomotive Works. Needs some screws tightened and pieces secured. **Est. \$1,000 ~ \$1,500 HWAC# 42812**



Lot # 2622 Nevada, Virginia City **Virginia & Truckee Ephemera Lot** c1880 The premier piece is a pay receipt for C. Vovich on cardboard stock. It is for 4 days of labor on the C&C (Carson & Colorado) side track. Signed by Frank Kelly, foreman on front and JJ Homes, superintendent and Charles Doris, time clerk on reverse. Cancelled with "Pd, 9/30, 76". A real show piece.

2) 1876 receipt fro Crown Wheels for the Morgan Mill. 3-4) Two 1890 Statement of Ore Weighed from the Rock Point Mill in Dayton. One was 63 tons and the other 64 tons. **Est. \$100 ~ \$150 HWAC# 41737**

Lot # 2623 Nevada, **Nevada Short Line Company Bond - RARE** 1914 The Nevada Short Line was the master plan of A. A. Codd of Rawhide fame. He, at this time, owned mines in Rochester and thought that a railroad from Oreana to Rochester could be a money maker. The railroad was never properly funded. It was expanded twice in the first two



years, but still never was financially successful. In 1919 it shut down. Not only was this a short line railroad, it was a short-lived railroad. Coupons 5 through 10 still attached. Bond 5B to RG Giesler. (Reference pacificng.com.) (George Garfield & Robert Greenawalt Railway Express and Wells Fargo Collection) **Est. \$200 ~ \$300 HWAC# 41733**

Lot # 2624 New York, Volney **Bond: Town of Volney, NY--in aid of New York & Oswego Midland Rail Road (New York)** 1867 A large \$100 bond issued in 1868 to facilitate the building of this railroad. Attractive Very Fine with numerous small cancel holes. Issued to J. J. Wolcott. Signed by Wolcott, Dutton and ?. Wolcott was a State Senator at the time he purchased this! **Est. \$50 ~ \$200 HWAC# 41233**



Lot # 2625 Oregon, Portland **Oregon & California Railroad Company Revenue Check signed by Ben Holladay** 1870 Pictorial revenue imprinted check (RN-B) signed by stagecoach

pioneer Ben Holladay as company president. Holladay, known as the "Stagecoach King," created the Overland Stage to California during the height of the 1849 California Gold Rush. This check is dateline Portland, Oregon, Dec. 17th, 1870. Issued to Geo. W. Weilder for \$1,200. Multiple endorsements on the reverse. Printed by Britton & Rey, San Francisco. Some toning and soiling. Great Western autograph! (Prag Collection) **Est. \$100 ~ \$200 HWAC# 41263**

Lot # 2626 Oregon, Portland **Oregon & California Railroad Company Revenue Check signed by W.L. Halsey** 1871 Classic Western revenue-imprinted check issued for \$1,000 and signed by the company vice-president W.L. Halsey, namesake of Halsey, Oregon. Revenue imprint RN-B. Vignette of locomotive. Cut cancel and some staining. Please also see our check for this company signed by Ben Holladay. (Prag Collection) **Est. \$100 ~ \$200 HWAC# 41262**



See Photo Online

Lot # 2627 Texas **Mounted Photograph of Pecos Railroad Bridge** c.1905 Mounted original, but lower quality, photo of the Pecos Bridge, the longest railroad bridge over a river at the time. Photo measures 8.75 x 6.5", mounted on blackboard. Dated October 13, 1905 on the reverse. **Est. \$100 ~ \$150 HWAC# 43651**

Lot # 2628 United States **American Railway Pocket Guide (1852) w/ Map** 1852 Pocket Companion, for the United States and Canada Containing Correct Tables for Time of Starting from all Stations, Distances, Fares, Etc. on all the Railway Lines in the United States; Together with a Complete Railway Map. Also the Principal Steamboat and Stage Lines Running in Connection with Railroad. By R S Fisher. Published On the 1st of Every Month By Dinsmore & Co (1852).



RAILROAD, STAGE, & STEAMSHIP

Includes a map of rail lines. 13 x 16". 144 pages. Covers in very poor condition. Map and pages in very good condition. **Est. \$100 ~ \$300** HWAC# 27517



Lot # 2629 United States Central Pacific Railroad Company Deed 1893 Framed CPRR deed signed by Charles Crocker and George Miles on the 28th of November, 1893. 22 1/2 x 19 1/2" oak frame with document visible from both sides. **Est. \$1,500 ~ \$2,000** HWAC# 42226

Lot # 2630 United States Embossed Union Pacific Switch Locks Lot of two, each embossed



with Union Pacific Switch CS 1. Both have UP keys. One is stamped Adlake and the other Adlake 12996. They are in nice condition, but have been used. **Est. \$250 ~ \$1,000** HWAC# 22170



Lot # 2631 United States Northern Pacific Railroad Booklet (w/ map) & Report 1) Includes a map 9 x 15". The publishers of this booklet, Jay Cooke and Company, were the financial managers and marketers of the Northern Pacific Railroad. They printed many pamphlets such as this one, extolling the nature of the northwest and the benefits of the railroad itself. The railroad held huge land grants, extending up to fifty miles to either side of the prospective tracks, and as such it was in the

business of trying to sell the land to future settlers, prospectors, miners, or whomever would buy. Most of the transcontinental route on this map is still in the planning stages at this time- by the end of 1871 track had only reached as far west as Fargo, North Dakota. They would eventually get to the West Coast. Their route is now part of the Burlington Northern. 2) Also includes the 1877 Report of the President and Directors to the Stockholders. 18 pages. Includes a report on earnings and how different sections are faring. **Est. \$200 ~ \$500** HWAC# 27510

Lot # 2632 United States Railroad Ephemera Collection 1875-1905 Lot of 14. Six California Fast Freight Line 1875. From J. C. Meussdorffer, hat manufacturer from San Francisco. CPRR Express 1871 receipt to Lieutenant Bishop. One CPRR 1875 expense bill. Also, Wabash Line map; Chicago, Milwaukee & St. Paul receipt 1897; Louisville, Evansville & St. Louis Consolidated bill of lading 1895; Kansas City, St. Joseph & Council Bluffs bill of lading 1899; Kentucky Midland Railway bill of lading 1895; Chicago, Burlington & Quincy bill of lading 1882; Cleveland, Canton & Southern bill of lading 1899; and Alberta Railway and Irrigation Company billhead 1905. **Est. \$80 ~ \$200** HWAC# 41243

[See Photo Online](#)

[See Photo Online](#)

Lot # 2633 United States Three Railroad Badges Three badges: 1) red, white & blue Lorimer Lodge No. 293 B.R.C. of A. Cape Girardeau Mo., 9" long with enameled railcar at top; 2) 1915 San Francisco guest ribbon, 4" long, San Francisco Lodge No. 21, possibly Masons; 3) "In Memoriam" badge Sprague Lodge No. 133 B. of L. Spokane, Wash., 9" long, black with silver printing. **Est. \$90 ~ \$200** HWAC# 35147

[See Photo Online](#)

Lot # 2634 United States Two Books About Railroad Securities 1881, 1894 1) Manual of Rail Road Stocks, Etc. Spencer Trask & Co. From the desk of Charles B Whiting, Worcester, Mass. A great companion to Moody's. 80 pages. 2) Hand-Book of Railroad Securities with compliments of Clapp & Company. Description, Income, Prices, and Dividends. William B. Dana, publisher. January 1894. 239 pages. Both books are in good condition. 1881 paper cover has a tear and 1894 hard cover has stains. All pages are in excellent condition. **Est. \$80 ~ \$300** HWAC# 27518

Lot # 2635 zMexico, Michoacan **Ferrocarril Michoacano Del Sur Stock Certificates** 1921 Lot of 33 issued. Series C. Vignette of locomotive under arched title. Ornate green border. Located in Morelia, Michoacan, Mexico. Foreign revenue imprint inside of border along the bottom. No coupons attached. Corporate signatures. General condition is fair with some water damage, bent corners, and light toning. Each measures approx. 11.5" x 10" [Cox: FER-790-S-50] **Est. \$330 ~ \$660** HWAC# 24216



[See Photo Online](#)

Lot # 2636 California, Cutler Cutler; California Wax Sealer So, you wanted to send some money through Wells Fargo. You want it insured? For a price the agent would take the money out and count it in front of you and seal it with wax. If you didn't want it insured, the agent would hand you the "For Public Use" wax sealer and watch as you sealed the envelope. That would only guarantee it was not tampered with, not what was inside the envelope. This is the Cutler, California "For Public Use" wax sealer. Cutler is in Tulare County. **Est. \$50 ~ \$100** HWAC# 42658

Lot # 2637 California, Folsom Granite Banking House of C. T. H. Palmer Receipt 1864 Receipt dated Jan. 30, 1864 for \$75 from E. Rulisen; signed C. T. H. Palmer (per H. A. Clements). A 2 cent blue "Bank Check" Internal Revenue stamp. Blue paper printed by Towne & Bacon, S.F. Charles T. H. Palmer was Yale graduate who joined the



thousands of 49'ers along with some of his classmates. In the summer of 1852 he managed the Wells Fargo Office in Ophir a few miles west of Auburn. After catastrophic fires in the following

two years Palmer moved and set up another Wells Fargo Office in Rattlesnake, then a principal town on the American River. Soon after he opened another Office at Doton's Bar. His friend Charles T. Blake joined him in the town of Granite (later renamed Folsom) setting up another Wells Fargo Office that handled banking, the express business and assaying. The building was constructed of granite assuring fireproof security. Today the building remains a landmark in Folsom. Shortly after he married the daughter of Sherman Day of mining fame at the New Almaden Quicksilver Mine near San Jose. Roger Day, his brother-in-law, soon joined him in Folsom taking over the assaying from Blake. The firm was handling large quantities of gold dust and growing rapidly and shipping the assayed gold ingots to the San Francisco Mint by the new railroad connection. (Ref. "Charles T.H. Palmer: Pioneer Entrepreneur of Folsom", Robert D. Livingston, Golden Notes Vol. 37 No.3 Fall 1991, Sacramento Historical Society) (KHWA4-27-12-2 P100) **Est. \$100 ~ \$200 HWAC# 41352**

Large railway Express Sealed (br0ken) Envelope. 1951 Please see introduction to these papers for more information on George Greenawalt (George Garfield & Robert Greenawalt Railway Express and Wells Fargo Collection) **Est. \$150 ~ \$300 HWAC# 41711**

Lot # 2641 California, San Francisco Two Wells Fargo Handbills About Bank Merger 1905 These letter sized handbills are about the merger of the Nevada National Bank of San Francisco and the Wells Fargo & Co. Bank of San Francisco. One is generic and the other is addressed to the Union Company of Carson City, Nevada. **Est. \$70 ~ \$300 HWAC# 22773**

[See Photo Online](#)

[See Photo Online](#)

Lot # 2642 California, San Francisco Wells Fargo 1st of Exchange for \$1,000 in Gold Coin 1871 To Solomon Walters. Signed on back by Walters and George Miller. Number 370531. Stamped 'IN U. S. GOLD COIN' and 'PAID MAY 8 1871.' **Est. \$100 ~ \$200 HWAC# 42801**

Lot # 2643 California, San Francisco Wells Fargo Bronze Medal 1977 Wells Fargo bronze medal, 1852-1977, 125 Years. Commemorating the Founding of Wells Fargo & Company, March, 1852. front embossed with stagecoach and horses--very nice. 3" diameter. (2200 made) **Est. \$50 ~ \$100 HWAC# 42031**

[See Photo Online](#)

Lot # 2638 California, Los Angeles Wells Fargo Agent Greenawalt Button and Badges 1) Wells Fargo button for five years of service. 2) Large badge for the Railway Express Agency belonging to and identified as G. G. Greenawalt 3) "Ask Me about Air Express" green & red badge. 4) Small Air Express badge with wings. 5) Business cards for G. G. Greenawalt. (George Garfield & Robert Greenawalt Railway Express and Wells Fargo Collection) **Est. \$100 ~ \$150 HWAC# 41713**

[See Photo Online](#)



Lot # 2639 California, Los Angeles Wells Fargo Desk Magnifier c1906 Used by George Garfield Greenawalt. Has Wells Fargo diamond seal on upper right and pony express rider on upper left. "Wells Fargo Carloading Company / 650 So. Los Angeles St. - Los Angeles 14, Cal." written on bottom. Has been used and shows some wear, But still a wonderful desktop piece. (George Garfield & Robert Greenawalt Railway Express and Wells Fargo Collection) **Est. \$60 ~ \$200 HWAC# 41709**

[See Photo Online](#)

Lot # 2644 California, San Francisco Wells Fargo Framed Items (Photograph of Drivers and Robbery Circular) Lot of 3 representative pieces from Wells Fargo & Co, including a framed portrait of express drivers, Bacon, Lairds, Brothers Giddings, Honey, Haskell and Cawley. They are all posing with their riding whips. The photo was taken in 1884 in Yreka, California. Also included is a circular issued by the company looking for 5 men who robbed the LaPorte Stage near Forbestown of \$1,800 in gold dust and \$600 in coin. The reward amount is \$1,850. Last but not least, a lobby card from the 1951 Republic Picture, "Wells Fargo Gunmaster," starring Alan "Rocky" Lane and his Stallion Blackie. Lane would later gain fame on television as the voice of Mr. Ed. All these pieces are mounted and framed and in very nice condition. **Est. \$300 ~ \$600 HWAC# 11073**



Lot # 2640 California, Los Angeles Wells Fargo: Personal Employee Papers of George Garfield Greenawalt c1906-1951
 1) Box of 23 business cards.
 2) Three 1906 time cards.
 3) 1934 thank you letter.
 4) Eight letters to the American Consul in Rotterdam.
 5) Eight c1940 letterheads with names addresses and a map.
 6) Three letters about the American Shell Fish Company, One is on their

Lot # 2645 California, Tecopah Rare Death Valley Wells Fargo Consignor's Receipt 1915 Dated Tecopah Office on August 16, 1915. From Presto to Los Angeles. Signed by J Miller(?). (George Garfield & Robert Greenawalt Railway Express and Wells Fargo Collection) **Est. \$50 ~ \$100 HWAC# 41719**

[See Photo Online](#)

letterhead. 7) Small 1943 calendar. 8) Sixteen documents pertaining to George's retirement in 1951. 9) Four 1939 beneficiary documents. 10)

WELLS FARGO & OTHER EXPRESS



Lot # 2646 Illinois, Albany **Albany, Illinois Wax Sealer** So, you wanted to send some money through Wells Fargo. You want it insured? For a price the agent would take the money out and count it in front of you and seal it with wax. If you didn't want it insured, the agent would hand you the "For Public Use" wax sealer and watch as you sealed the envelope. That would only guarantee

it was not tampered with, not what was inside the envelope. This is the Albany, Illinois "For Public Use" wax sealer. Albany was laid out in 1837, and named after Albany, New York, the native home of a large share of the first settlers. **Est. \$50 ~ \$100 HWAC# 42659**

Lot # 2647 Nevada, Cornucopia **Wells Fargo Money Package with 3 Wax Seals** 1879 Seals say "Wells Fargo Co, Cornucopia, Nev." Express money package. "Said to Contain \$95.74." To



Harding & McMillan of Winnemucca. First ore was discovered here in 1872. By January 1873 a town site named Kaufmanville began building and was populated by around 70 miners. Cornucopia Mining District organized in August 1873. By September of that year the town site was proliferated by tent dwellings, three saloons, two restaurants, two butcher shops, a blacksmith shop and school. Cornucopia came to have three separate sections of town, separated by a few yards of space between them. The post office opened November 3, 1873. By December of that year the population was up to 1,000. A mill opened on Deep Creek in December 1874. Population had dwindled by then, but leveled out at 500. The mill at Deep Creek burned in July 1875. Slow times came over the camp by 1876 and a cloudburst which ruined much of the residential district in July of that year didn't help matters. Population had dwindled to 113 by the time the census was taken in 1880. **Est. \$100 ~ \$200 HWAC# 42679**



Lot # 2648 Nevada, Gold Hill **Two Good Gold Hill, Nevada Territory Pieces (Mining & Wells Fargo)** 1863 Two territorial Comstock pieces, both with adhesive revenue stamps. 1) Wells Fargo & Co. Certificate of Deposit for \$500 dated July 1, 1863. Dateline Gold Hill, N.T. Printed on thin green paper. 2) Maynard & Flood, bankers, check issued Nov. 13, 1863 by the Imperial

Silver Mining Co. (a Gold Hill mine) to A. Dubois. **Est. \$150 ~ \$200 HWAC# 43045**

Lot # 2649 Nevada, Virginia City **Early Wells Fargo Virginia City Letterhead** This 1868 letterhead is from "Wells, Fargo, & Co, / New York and California Express and Exchange Company." This is the early version of Wells Fargo. Sent to the agent at Downieville to pay A. Lancaster \$80.00. This is the first Comstock boom years. **Est. \$100 ~ \$200 HWAC# 42647**



Lot # 2650 Nevada, Virginia City **Wells, Fargo Express Receipt for Comstock Bullion** 1889 Although a later piece, this still has great historical provenance. It is for the Consolidated California and Virginia Mining Company for 24 bars of bullion valued at eighty five thousand dollars. (That would be over \$2,000,000 today. This answer is obtained by multiplying \$85,000 by the percentage increase in the CPI from 1889 to 2014.) It was being sent to the Nevada Bank in San Francisco. 5" x 8.25" **Est. \$50 ~ \$75 HWAC# 42646**

[See Photo Online](#)



Lot # 2651 Nevada, Virginia City / Carson City **Three Historic Wells Fargo Checks** 1869-1886 1) 1869. Carson City office of Wells, Fargo & Co. Virginia. To major Nevada commission agent D. W. Earl. Signed by Yerington. Nevada two cent revenue stamp. 2) Carson City 1875. Imprinted Yerington & Co. Made out to J. M. Benton of the famous Carson City to Lake Tahoe stage company. 3) Virginia, Nevada 1886. Imprinted Savage Mining Co. To the Sutro Tunnel. From R. Keating, although the name has been cut cancelled. (George Garfield & Robert Greenawalt Railway Express and Wells Fargo Collection) **Est. \$100 ~ \$200 HWAC# 41720**

Lot # 2652 **Framed Wells Fargo Photograph of Early Gas Powered Work Truck Plus Other Express Items** Over 35 Wells Fargo related items! 1) Framed Wells Fargo Photograph of Early Gas Powered Work Truck Clearly marked Wells Fargo & Co, Express. Photo is 5.5 x 7.75." 2) Photo of iconic "Touch it if you dare!!" with guard dog on top of a Wells Fargo lock box. 3) 1909 booklet "Official Express Classifications" 38 pages. Also paper: Advance charge, Glass handle with care, COD, Railway Express Agency, Do not open until Christmas, This side up, valuable, Keep away from heat, Perishable no delay, Caution acid, Prepaid, Holiday cards, oversized stamps, REA post card, two unused Cedarville checks, AT tag from (?), 1910 post card of Wells Fargo wagon, Aurora Colorado express, two Shasta California express, Colorado Springs express tag. **Est. \$100 ~ \$200 HWAC# 42805**

[See Photo Online](#)

[See Photo Online](#)

Lot # 2653 **Under Cover for Wells Fargo** Rare 1st edition. "Under Cover for Wells Fargo. The Unvarnished Recollections of Fred Dodge," edited by Carolyn Lake.

Published by Houghton Mifflin Company Boston, 1969. Hardcover, original dust jacket, but faded, 8.5" x 5.75", 280 pp. **Est. \$50 ~ \$100 HWAC# 43419**

Lot # 2654 **Wells Fargo / Railway Express Agency list of Firearms** Extremely rare! This is the record of the firearms by serial number for the REA, a part of Wells Fargo. From the Butterfields 1976 auction. 743 firearms by serial number. A great reference! These came from the Hawthorne Museum. Also auctioned were wagons, desks, strong boxes, etc. Includes original newspaper ad for a different REA auction. (George Garfield & Robert Greenawalt Railway Express and Wells Fargo Collection) **Est. \$200 ~ \$400 HWAC# 41718**





Lot # 2655 Wells Fargo /Railway Express Agency Photographs
From the personal collection of George Garfield Greenawalt, express agent in Los Angeles from 1906 to 1951. Lot of ten. Includes two Western Air Express photos. One is a package being delivered and the other a group of men outside the Western Air Express. The later is signed by Jimmy James, the pilot who flew

the first package for the company. It is addressed to G. G. Greenawalt. The former is probably a photo of him delivering that package. Three show different Railway Express Agency trucks. (George Garfield & Robert Greenawalt Railway Express and Wells Fargo Collection) **Est. \$200 ~ \$400 HWAC# 41721**

Lot # 2656 Wells Fargo and Railway Express Agency Ephemera Collection
Includes Wells Fargo 1873 check from Columbia, California, four receipts, three small 1943 business calendars, two REA 'Call & Delivery' cards in color, three blank through cards, one very large unused envelope, Air Express business cards for G. G. Greenawalt, (George Garfield & Robert Greenawalt Railway Express and Wells Fargo Collection) **Est. \$100 ~ \$150 HWAC# 41723**

[See Photo Online](#)



Lot # 2657 Wells Fargo and Railway Express Agent Picture Files
Private collection of agents with photographs from George Garfield Greenawalt. 47 cards with photos. Some identify the person in some way (Sp, vehicle, SP Depot, MOB, etc.). This is absolutely unique and possibly the only surviving pictorial record!!! Since Greenawalt worked in Los Angeles, it can be presumed these are all Southern California related. Also includes a list of Railway Express agents throughout the United States in January of 1949. Each city has its population. (George Garfield & Robert Greenawalt Railway Express and Wells Fargo Collection) **Est. \$300 ~ \$1,000 HWAC# 41725**

Lot # 2658 Wells Fargo Cap, Badges, and Lock 1) Cap has a badge that says "Wells Fargo Services" on a blue scroll with an eagle above, and horse on rider in blue in middle. 2) Badge says Wells Fargo Express Co. Special Agent. 3) Lock. Lock Cover says "W. F. & Co.". Back says "Officially authorized and produced by specific order of Wells Fargo & Company." **Est. \$100 ~ \$200 HWAC# 42811**



Lot # 2659 WF, REA, and ARE Cards and Passes c1913-c1950
Cards belonging to George Garfield Greenawalt, agent for the Tonopah & Tidewater Railroad at Ludlow. Lot of 37. Includes a 1913 Wells Fargo & Company Express Pass. A Texas State Florists Association

1938 badge. Most are business cards for Greenawalt for the Railway Express Agency, Wells Fargo, and Air Express. Also a warped photo ID card for Greenawalt from the Railroad Express Agency. (George Garfield & Robert Greenawalt Railway Express and Wells Fargo Collection) **Est. \$100 ~ \$300 HWAC# 41717**

Lot # 2660 Arizona, Tombstone Railway Express Agency Cover, Tombstone, A.T. Scarce
express cover from Arizona Territory from Agent: Railway Express, Tombstone. One cent U.S. postage. EF. **Est. \$100 ~ \$200 HWAC# 41338**



Express and Wells Fargo Collection) **Est. \$100 ~ \$200 HWAC# 41712**

Lot # 2661 California, Los Angeles Greenawalt Retirement Papers from Railway Express Agency 1951 Letter from General Manager with envelope marked personal. Unusual hand cancel. Eight boxes of business cards. Two older business cards with telephone 8034! See introduction to Greenawalt papers for more information on George Greenawalt. (George Garfield & Robert Greenawalt Railway

**Visit our online catalog at
www.HolabirdAmericana.com
Zoom in and see detail on
high resolution images of ALL LOTS**

WELLS FARGO & OTHER EXPRESS



Lot # 2662
California, Los Angeles **Lindbergh's Unique Wedding Gift sent by the Railway Express Agency** 1929 Lot of nine items. 1) Photograph of the gift sent from Los Angeles to New Jersey to Colonel 'Charles 'Lucky' Lindbergh on his

wedding day. It is a cake! 2) A letter (probably sent to news agencies) about this gift; a 170 pound Simmel fruit cake. Did it arrive in one piece? 3-4) Two copies of a letter from New Jersey congratulating the REA for delivering the cake in perfect condition. 5-9) Three personal photographs taken by G. G. Greenawalt (we presume) of the packaging. Two negatives. These may be unique. Letters are fragile and show wear. From the personal files of George Garfield Greenawalt. (George Garfield & Robert Greenawalt Railway Express and Wells Fargo Collection) **Est. \$200 ~ \$400 HWAC# 41722**

Lot # 2663 Large Collection of Railway Express Agency Collectables 30 plus items. Three booklets: Retirement Allowance Plan of 1939, Pension Plan of 1929, and Rules Governing Hours of Service and Working Conditions of Employees from 1927. Also a colorful Air Express pin, small rulers (warped), desk business calendars, Railway Express postcard, REA unused baggage tag, nine Air Express stickers, "Do Not Open Until Christmas" gift cards, etc. (George Garfield & Robert Greenawalt Railway Express and Wells Fargo Collection) **Est. \$120 ~ \$200 HWAC# 41724**



County about tax issues. Also a Union Pacific corner cover from Boise Idaho dated 1924. Pacific Express Company letterhead from J Wagar to J. T. Morgan. About the Johnson case? **Est. \$150 ~ \$500 HWAC# 41242**

Lot # 2665 Railway Express Agency Magazines 1935 - 1953 Lot of 18 Messenger Expresses. It starts with a 1935 cover of Shirley Temple receiving an important package at her Hollywood studio with articles on taxation of railroads, San Diego Exposition, Colleen Moore's Fairy Castle, how REA engineers kept WBBM of Chicago on the air, shipping elk to Virginia, kangaroos, and lots of REA news. Then there is the November

1936 volume. Several short bios on higher management. An article about 24 hours at Pier 14 in San Francisco. Pascal Celery from Colorado and Apples from Wenatchee. REA glee club sings at Opera House. etc. And that is just two random volumes. The cover art is fabulous. The articles historical and informing. (George Garfield & Robert Greenawalt Railway Express and Wells Fargo Collection) **Est. \$100 ~ \$300 HWAC# 41726**



[See Photo Online](#)

Lot # 2666 REA Unused Papers from Greenawalt Collection Nine oversized envelopes. 1947 REA folder. Over 50 REA through cars. Twelve 1942 Air Express calendars. Booklet of over 20 G.

G. Greenawalt business cards. Six colorful REA Delivery Service cards. (George Garfield & Robert Greenawalt Railway Express and Wells Fargo Collection) **Est. \$100 ~ \$150 HWAC# 41727**

Lot # 2667 California, Indian Creek **Rare Indian Creek Express Cover** 1866 Unused. Extremely fine, a rare express frank with no used examples known. Express operated between Yreka and Indian Creek in 1866. **Est. \$200 ~ \$400 HWAC# 42660**



Lot # 2668 California, Placerville **Pacific Express Entire: Placerville to Sacramento** c1853 Extremely strong Dec. 17 Placerville cancel. Mailed to General Hutchinson. He built the first pier extending out into Lake Michigan; also built two large, first-class vessels and a steam flouring mill. In 1848, in Wisconsin, he was appointed a delegate to the National Convention that nominated Zachary Taylor for President. In 1850 he came overland with a party of fifteen traveling from Council Bluffs to Sacramento. General Hutchinson immediately put up a building on J Street the upper part being the National Hotel and the lower part a store, occupied by Hutchinson, Green & Co. In 1851 he was elected Mayor of the city. [September 24, 1884, Sacramento Daily Union obituary] On 1853-55 3¢ Nesbitt entire. **Est. \$100 ~ \$200 HWAC# 42661**

Lot # 2669 California, Sacramento **Sacramento Aqua Blue Pacific Express Cover** Large oval, well struck cancel. Rectangular blue 'PAID.' Also a manuscript 'paid' at bottom of cancel. Very nice piece. No stamp (may have



been removed). The 1854 LeCount & Strong City Directory list Tandler & Company as importers of clothing and dry goods. **Est. \$100 ~ \$250** HWAC# 42662



Lot # 2670 Idaho, Quartzburg California, Oregon and Idaho Stage Co. Ledger Large ledger for the California, Oregon and Idaho Stage Co., 1899-1900. Interestingly, there is very little written on this obscure stage line. We checked the numerous volumes on expresses and stages in the West from 1860-1920 and found nothing. This ledger contains about 100pp of waybill listings; the number of packages, from, to, where, amounts, etc. The pages are in or out of Quartzburg Idaho, some connecting to Boise. The general Manager, A.H. Boomer was very active in other road projects of the same period, particularly in California (Mt. Hamilton Road, etc). Covers in poor condition, contents very readable, but some page edges chipped. This may have been a shortly run operation. **Est. \$1,000 ~ \$2,000** HWAC# 43703

Lot # 2671 United States Boyds Express Letters with Adhesive Stamps Two letters dated 1846 and 1848 sent by Boyds Express. Revenue stamps attached. **Est. \$60 ~ \$250** HWAC# 28520



Lot # 2672 Adams Express Postage Scale with Adams Heart Shaped Lock c1906
 1) Scale is stamped in white "Adams Express." Triner Patent. Shows the wear of its age. See photo. 7 x 6 x 7.5".
 2) Lock is etched Adams & Co Express. Lock is Wilson Bohannon Co of Marion, Ohio. Number 85. **Est. \$100 ~ \$250** HWAC# 42676



Lot # 2673 Red AmEx Co. Lantern c. 1900 Maker embossed on vented top "Star Head Light Co., Rochester, NY, USA". The globe shield has rare embossing "AMEX Co." (American Express Co). Red glass globe has "Vulcan/ New York/ Dietz/ U.S.A." Has modern red paint, easily stripped. No severe dents or damage. 10 1/2" H. Very good condition. **Est. \$100 ~ \$300** HWAC# 41640

Lot # 2674 Unusual Express Strong Box Larger than the classic express box, this must have been used by some small company. 24



x 15 x 15". Green with black scroll work. Not in working condition. Lock has been covered. But the inside clearly shows this was a lock box - it is heavy and well made. Inside has an ugly coat of orange paint on the bottom and Scientific American papers on the sides (1854 and 1855). Opens. **Est. \$400 ~ \$1,200** HWAC# 22163

Consigning with Holabird Western Americana Collections

We've sold many fantastic collections over the years and we're always excited for more great material! Consign with us and enter into a lasting and beneficial partnership.

Why should you consign with Holabird Western Americana Collections?

We combine the elements of historically researched descriptions, professional photography, artfully designed catalogs, and a team of specialists to consistently produce record prices. Consign your items to the experts and let us help you realize the most for your collections.

What do you get when you consign with us?

Holabird Live: Live internet auctions put your material in front of a larger audience than ever before. Our internet presence has opened up the market to a whole new generation of bidding. Not only do we offer live online bidding at no additional charge, but we also offer phone bidding and have live agents readily available to secure bids on all platforms. Never before has bidding in one of our auctions been so easy.

Historically Researched Descriptions: Our team of research writers craft colorfully written historical descriptions that tell the stories behind the items we sell. Through these accurately written descriptions we paint a picture for the collector and create a need and desire for your items.

Professional Photography: Colorful, vibrant, high resolution photographs tell a story all their own. Our expert photographer will give your items the attention they need to make them look amazing both online and in print.

Cataloguing: Full color, high quality, artfully designed catalogs put your collections on the coffee tables of collectors worldwide. Our print catalogs are more than a just a catalogue of goods for sale, they've become historic reference works that our clients have come to know and love.

Marketing: We market extensively to advanced collectors through online advertising, national print advertising, trade shows, and direct proprietary marketing among other publicity. We're seasoned marketers so you can rest assured knowing your material will get the recognition it deserves.

Superior Customer Service: At Holabird's Western Americana Collections, we pride ourselves in offering a high level of customer service that you can count on. Our commitment to you is what sets us apart from the rest. You want someone you can trust, and we are by your side every step of the way.

Our knowledgeable and friendly staff will help guide you through this simple process so you can see your hard-earned collections meet the right hands for the right prices. Contact our office for more information or for a consultation. Here at Holabird's Western Americana Collections, we don't only achieve record-breaking sales prices—we create legends.

The Process:

Appraisal & Inspection: We begin the process with an informal inspection of your item(s). We can do this in person or through photographs and descriptions, via email, fax, mail, or telephone. Once we have the opportunity to evaluate your items, we will then provide you with a professional opinion of value.

Submit your photographs & descriptions to:

Holabird's Western Americana Collections

3555 Airway Drive, Suite# 308 Reno, NV 89511

Email us at info@holabirdamericana.com

Call us toll free 844-HWAC-RNO (4922-766) or send us a fax 775-851-1834.

Consignment: Once we've determined that your material is a good fit for us and one of our upcoming sales, we will discuss the perfect venue for your items and spend some time with you to go over reserves, estimates, and sellers commission. Our commission rates are highly competitive and all inclusive. We have no photo or cataloging fees, no insurance fees, and no other hidden charges or gimmicks.

Estimates & Value: We use decades of sound experience and judgment to assign estimates. We market extensively through national advertising and participation in trade shows, and we find that most items sell for premium prices. There are, however, unpredictable times when items sell for less than expected. This is usually balanced by items selling for premiums. We cannot predict market prices or conditions and, ultimately, our buyers set the prices.

Shipping & Transportation: There are many ways to get your material to us for processing. You can arrange to bring your material directly into our Reno office, we can arrange to pick up your collection, or you may ship your items to us.

Note: First Time Bidders

Please don't forget, if you anticipate spending over

\$25,000, you must be pre-approved for bidding.

We request two references—Bank or Auction House