



**Lot # 4000** California, Angels Camp **Angels Camp Ice & Soda Works Seltzer Bottle** Choice Condition . Rare. Very Rare! **Est. \$100 ~ \$200** HWAC# 42829

**Lot # 4001** California, Benicia **McGee Soda Bottle from Benicia** Classic B. J. McGee soda bottle from Benicia. Medium aqua, applied top, c1870. Never touched by cleaners, some slight original inside stain, otherwise pristine. Bubbles. His business was known as the Union Soda Works.

Scarce. **Est. \$200 ~ \$500** HWAC# 43638



**Lot # 4002** California, Bodie **Pearson Bros. Bodie Soda Bottle** A beautiful medium blue aqua Pearson. Never touched by bottle folks, this is a new discovery to the Bodie collecting world, coming out of a very old western collection. Appears to be dead mint. A beauty. Please inspect. The original glass stopper is still inside. **Est. \$2,000 ~ \$3,000** HWAC# 42272



**Lot # 4003** California, Eureka **A. Monroe Gravitating Stopper in Deep Blue Aqua** A. Monroe, Eureka H. B. (Humboldt Bay), Cal. Gravitating Stopper embossed base. This bottle is one of the prettiest Gravitating Stopper bottles you'll ever see. Heavily whittles with good crudeness in the glass, the color is nothing



short of spectacular. Two external lip chips that are invisible on the shelf. This bottle is subject to the longest story in Markota's book on California Hutchinson soda bottles. We suspect that it was produced in 1876, the opening year of the business. It is the oldest in the series of six different Monroe bottles, and was the only specimen ever seen by one prominent Eureka collector. Rated as extremely rare, this is a prize for any western soda collector. **Est. \$200 ~ \$600** HWAC# 43619

**Lot # 4004** California, Grass Valley **Deamer Soda Bottle** Beautiful Deamer applied top soda bottle, with "W.E.D." on reverse. medium aqua, sparkling pristine. c1875. Deamer came to California for the gold rush in 1851. He moved around the central mother lode region with the soda business and stopped in Grass Valley where it appears he stayed for at least two decade. Classic Mother Lode mining region soda bottle. **Est. \$120 ~ \$400** HWAC# 30442



**Lot # 4005** California, Grass Valley **Extra Rare Grass Valley Whiskey Back Bar Bottle** Lot of three. Choice bottle. Great Display piece! Also A Grass Valley Souvenir



Plate and a Buffalo Cafe Reprint. **Est. \$320 ~ \$550** HWAC# 42830

**Lot # 4006** California, Grass Valley **Farrell Grass Valley Blob Soda** J. A. Farrell, Grass Valley with large "F" on reverse. Beautiful deep blue aqua, applied top, clean and pristine. A choice central Mother Lode region soda from the 1860's. This one is a beauty. **Est. \$200 ~ \$400** HWAC# 43629



**Lot # 4007** California, Grass Valley **R. H. Williams, Grass Valley Soda Bottle** This Hutchinson Soda Bottle is in a color we have never seen before. (Perhaps the selenium glass has been irradiated?) 7" tall. Lots of bubbles from manufacturing process. One 1 cm crack below the first 'S' in 'Grass'. **Est. \$50 ~ \$100** HWAC# 42828



## BOTTLES & SALOON/BREWING

[See Photo Online](#)

**Lot # 4008** California, Los Angeles **Excelsior Soda and Mineral Water**  
Excelsior Soda and Mineral Water Factory blob soda, applied top in a pretty green aqua. Los Angeles, circa 1875, "rare",

but in our experience extremely rare. The company was run by Aockerblum & Saur. This specimen is sparkling clean with character. It has a 1/4 inch annealing crack under the blob on the back side. Otherwise a beauty! **Est. \$300 ~ \$600** HWAC# 43614

**Lot # 4009** California, Los Angeles **Los Angeles Soda and Mineral Water Factory** Choice aqua Los Angeles soda bottle with applied top. 1875-1884. H. W. Stoll on reverse. Stoll was a prolific advertiser, and some of his colorful advertising material is known in collections today. These bottles are "rare" according to Markota, but in our experience are extremely rare. This specimen is pristine clear, and looks dad mint to us, but please inspect. **Est. \$300 ~ \$600** HWAC# 43613



**Lot # 4010** California, Nevada City **Nevada City Soda Works** Beautiful medium aqua blob soda with applied top. 1880's. Classic Mother Lode soda, a bit more common than Farrell and very desirable. In the 1870's Siebert ran a brewery, and moved into soda water in the 1880's. Clean, mine, pristine with original metal stopper holder. **Est. \$100 ~ \$200** HWAC# 30437



**Lot # 4011** California, New Almaden **Two Varieties of the New Almaden Soda Bottles**

Two varieties of the New Almaden soda bottles. Here are the 1860's clean aqua bottle with "W&W" embossed on the reverse (surface bubble break at right base edge) with some nice elongated bubbles, and a blue-aqua example of the 1879 dated variety with a little bit of stain. The New Almaden sodas have always been popular. Now a state park, the site had the largest American mercury mine for almost half a century. Worked by the Spanish before

the gold rush, this property became a central figure in a legal battle that went all the way to the Supreme Court (and White House). The mineral springs there ran out through time, as well as contained mercury. This is a choice historical pair for any western mining or soda collector. **Est. \$200 ~ \$500** HWAC# 43631

**Lot # 4012** California, Placerville **Alden & Campini Druggists bottle & two Coke bottles** Lot of 3: 1) Alden & Campini Druggists bottle, chips at top, 4" tall; 2&3: two green 6 oz. Coca-Cola bottles 7 3/4" tall. **Est. \$25 ~ \$50** HWAC# 42219



**Lot # 4013** California, Placerville **Pearson's Hutch Soda,** Placerville Pearson's Soda Works Hutchinson soda bottle. Straight line embossing, variety 2 in Markota, c1892-1902. 6.25" tall. tooled top. **Est. \$100 ~ \$300** HWAC# 43633

**Lot # 4014** California, Sacramento 13 **Sacramento Soda Bottles** Lot of 13: one brown, several green, all sizes. Aristo Mineral Water and Siphon Co., Wilson Mfg. Co., California Bottling Works(2), Shasta Water Co(3), Kist Beverage, "Schnerr"(3) Sac-Cal, O C Beverages, Buffalo Brewing Co.(brown),. **Est. \$70 ~ \$120** HWAC# 42221

[See Photo Online](#)

**Lot # 4015** California, Sacramento **M & R Soda bottle** Deep cobalt blue, with M R / Sacramento on front and Union Glass Works / Phila on reverse. 7 1/2" tall, with 2 cracks near top. So Martin Rancich's solda bottles spelled Sacramento correctly. The soda works existed from 1851-1863. Rare. **Est. \$700 ~ \$900** HWAC# 42220



**Lot # 4016** California, San Francisco **1850's Cudworth Soda** A. W. Cudworth & Co. applied top, pontiled soda bottle in bright forest green. One of the scarce varieties, rectangular slug plate with "Cal," underneath San Francisco. Circa 1856. An outstanding

example, please inspect. Cudworth took over Chase's business, then sold out to Brader in 1860. A classic California gold Rush bottle. **Est. \$400 ~ \$700** HWAC# 43634







**Lot # 4017** California, San Francisco **Babb & Co. San Francisco Soda, Gold Rush** Babb & Co. soda in medium green, pontil, applied top. bubbles. Never touched by the “cleaners”, this is a relatively choice example. please inspect. 1852-1854. EARly gold rush. This bottle also comes in shades of green, aqua and light blues. **Est. \$300 ~ \$700** HWAC# 43635

**Lot # 4018** California, San Francisco **Taylor & Co., Valparaiso Chile** A classic Taylor & Co. soda from Valparaiso,

the stopping point for all ship travelers around the horn to the CALifornia Gold Rush. The San Francisco firm of Taylor & Co. had three separate factories: Valparaiso, San Francisco and Eureka. This specimen, pontiled, is a choice teal blue-green. Very clean and appealing, has the appearance of being sparkling mint, please inspect. no chips or cracks evident. **Est. \$500 ~ \$1,000** HWAC# 43617



**Lot # 4021** California, San Francisco **Williams & Severance, San Francisco** Deep cobalt blue applied top, pontiled soda bottle “Soda and Mineral Waters” on the reverse. This is a classic California Gold Rush relic, made between 1852-1854. Clean, appealing. RAre. There is a bubble burst at base, and a “ping” in another spot on the base, and slight lip roughness to the top of the lip by feel. A modern-day expert would have these buffed out in nothing flat. **Est. \$500 ~ \$1,000** HWAC# 43616



**Lot # 4022** California, San Francisco, Marysville, stockton **Three City Chase, Gold Rush** Chase Mineral Water Co, embossed from San Francisco, Stockton and Marysville. Pontil, applied top, medium forest green, bubbles. About as good an example of this rare bottle as you’ll ever see. This is the only Gold Rush era soda bottle embossed with “Marysville.” 1853-1854 only. Rare. Chase and Taylor each had three different soda factories in the gold rush. Curiously, both companies did this at the exact same time. **Est. \$500 ~ \$1,000** HWAC# 43636

[See Photo Online](#)

**Lot # 4019** California, San Francisco **Three Acme Beer Bottles** Three paper

label brown bottles from Acme Breweries. Two quart size: one “Victory Size” one “Party Size”. Pint sized bottle’s label is wounded but was a malt tonic. **Est. \$50 ~ \$100** HWAC# 42222



**Lot # 4020** California, San Francisco **Three Choice Octagonal Sodas from San Francisco** Champagne Mead (1871-2) [dug Carson City, 1976), dark blue-aqua with character; J. N. Gerdes (1873-1877) in medium aqua; and McEwin (1863-70) in light aqua. All three appear pristine, please inspect. All were made in SAN Francisco and used during the Comstock boom of the 1860’s to 70’s. **Est. \$300 ~ \$600** HWAC# 43632

**Lot # 4023** California, Susanville **Two Rare Spaulding Drug Bottles** Two of the early Spaulding drug bottles. Thee are the two pictured in Ghost Towns and Medicines, page 347 (the top two). They are the older of the Spaulding bottles, probably dating to the beginning of his business in the late 1880’s to early 1890’s. These are the only two of these vessels we’ve seen. The third, later bottle, is much more common. Susanville is about an hour and a half north of Reno, and primarily served the lumber and agriculture business. Both are clear and undamaged as far as we can tell. please inspect. **Est. \$200 ~ \$400** HWAC# 43622



## BOTTLES & SALOON/BREWING



**Lot # 4024** California, Tahoe **Summit Mineral Water Bottle** One of the classic Summit Mineral Water bottles of Jacob Hoehn. (See Nevada Bottle Book, Vol 1). Hoehn brought the mineral water down from Summit Springs by wagon to Sacramento. This bottle is blue aqua, and is a choice example, please inspect. Clean and pristine. It has the long, thin neck with applied top, typical of the 1860's and early 1870's soda bottles. **Est. \$300 ~ \$600** HWAC# 30277

**Lot # 4025** California, Vallejo **Empire Soda Works, Vallejo Blob Soda** Empire Soda Works/ (patterns)/ Vallejo// (Large Eagle). Applied

top, long neck, deep blue aqua to light teal, heavily whittled. c1874-79 (the long neck and applied top indicate it is probably not post-1880). This soda factory was run by Frank and Charles O'Grady Sparkling mint except for the tiniest top lip imperfection. A choice pictorial California soda bottle. **Est. \$400 ~ \$1,000** HWAC# 43618



**Lot # 4026** Colorado, **Pikes Peak Whiskey**

**Flask** One of the very popular Pike's Peak whiskey flasks embossed with the miner facing left with stick and bag and pick thrown over the shoulder, hollow oval at base, eagle with ribbon on top on reverse with another blank oval. Applied top, average aqua, sparkling mint. 7.5" tall, from an old western collection. this was a last minute entry, thus we didnt have a chance to type the bottle from the wonderful Pikes Peak Bottle book. **Est. \$100 ~ \$300** HWAC# 42271



**Lot # 4027** Connecticut, West Willington **Liberty Eagle, Willington Glass, Slope Top** A rare variety of the popular Willington Liberty Eagle whiskey flask in dark green, flat base, circa 1860. 8" tall. Slope top, applied, all striations still present (not buffed). Sparkling clean and mint, with no apparent chips or dings. This is a beauty, a perfect bottle for your collection. **Est. \$1,000 ~ \$1,500** HWAC# 40879

**Lot # 4028** Georgia, **Eagle with Flag & Shield Cobalt Blue Soda** Choice cobalt blue, applied top, pontiled soda with a full face embossed eagle sitting on top of a shield flanked by US flags on both sides, with sun rays over the top. "Superior Soda Water" embossed



on the reverse. From Harmer Rooke sale April, 1992 (sold for \$500). The bottle has the appearance of professional cleaning, enhancing the appearance. please inspect. no cracks or chips evident. It has been reported that these were made for a Georgia firm, but it "looks" eastern. **Est. \$500 ~ \$1,000** HWAC# 43615



**Lot # 4029** Hawaii, Honolulu **Hollister & Co. Honolulu Blob Soda**

**Bottle** The Hollister bottle come sin a number of bottle shapes, styles and colors. A wonderful five bottle suite can be seen in Elliott & Gould Hawaiian Bottles of Long Ago, page 65, and two more on p66. Of the blobs, there are eight different of this style, which can be difficult to tell the difference. This bottle has an applied top, with rounded blob, and is one of the early varieties. appears to be Elliott & Gould number 178, dating from about 1873, with a large "CO" of (company). Clean and bright, no visible damage, nice, please inspect.

Scarce. **Est. \$300 ~ \$600** HWAC# 43630

**Lot # 4030** Missouri, St. Louis **GAR Whiskey Flask** 1887 Grand Army of the Republic National Encampment, St. Louis, MO, 1887. 2.75" x 2.25", metal covered in fabric on cord with ribbon and sequin boutonniere at end. Very rare. **Est. \$100 ~ \$200** HWAC# 42038



**Lot # 4031** Nevada, Carson City **Thaxter in Amber** This is the ultra-rare amber Thaxter from Carson City. Thought to be only three or four known, it is one of the great Nevada rarities. The bottle may date to the late 1870's or perhaps 1880. It must have had a specific content, though newspaper advertisements didn't reveal the contents. It is 9" tall. Thaxter ran his business in Carson from 1878-1903. He moved to Redlands, California in 1893



and opened a store there, also with an embossed drug bottle. This specimen is x-Haddock and Holabird, the one pictured in Ghost Towns and Medicines, p357. It has very light stain, never touched by cleaning. **Est. \$2,000 ~ \$3,500 HWAC# 43620**



**Lot # 4032** Nevada, Carson City **Trib-A-Liniment For Sprains**  
This is the ultra-rare Trib liniment bottle. For decades, this was the only known specimen. Clear, light purple, clean and problem free. 8" tall. The bottle was probably made about 1897, and is considered a patent medicine bottle. The remedy of that name had been advertised in Nevada prior to the Trib company being formed, offered out as a prescription by drug man John Shier of Delamar (Pioche, Caliente, etc.) **Est. \$1,500 ~ \$3,500 HWAC# 43621**

**Lot # 4033**  
Nevada, Elko  
**James Dewar**

**Hutchinson Soda Bottle** One of the rare Nevada hutches, the James Dewar of Elko in round slug plate, aqua. Tooled top, strong embossing. Circa 1895. Dewar was one of several Scottish emigrants to Elko to go into the soda water business. Most also became either miners or cattlemen. Dewar tended toward cattle. An outstanding example, with the tiniest "ping" on the top. **Est. \$800 ~ \$1,400 HWAC# 43637**



**Lot # 4034** Nevada, Goldfield **Goldfield Bottling Works Co. Soda Works Sparkling Dark Purple** Goldfield Bottling Company Soda Works, a sparkling dark purple clean example. This choice rare crown top soda has only a minor ding on the base. The large embossed letters G.B. Co. are visible on the front, and are an abbreviation for the Goldfield Bottling Company. The bottle probably dates to the earliest of this company's existence, c. 1904-1906. This was the important development period for Goldfield, one of the West's largest gold ore deposits. It produced in excess of 8,000,000 ounces of gold over time. There are probably less than eight of the G.B. Co. sodas in premium condition like this piece remaining today. **Est. \$700 ~ \$1,200 HWAC# 38923**



**Lot # 4035** Nevada, Reno **Duncan's Drug Store Bottle** Choice, mint Duncan's drug bottle from Reno (1908-1914) in selenium glass (turns slight yellow, versus the manganese glass that turns purple.) Clean, beautiful, This is the example shown in Ghost Towns and medicines, page 118. Duncan got his start in Reno in 1904, and by 1908 was on his own. His original partner was Ray Reese, a saloon man partnered with H. J. Thyges. **Est. \$150 ~ \$300 HWAC# 43626**



**Lot # 4036** Nevada, Reno **Septimus Hoole Drug Bottle**  
The very rare Septimus Hoole drug bottle. oval, flat base (no embossing), c1877. Mint, except for some stain as originally found. These incredibly rare bottles were all found in one outhouse by Tony Gospodnetich and Leroy Felch, along with one stray, the Hoole & Co. Most were chipped or damaged, and this one is a beauty. Hoole was only in business for a very short period of perhaps a year and a half. He is today known for the Washoe County building in Reno, his greatest accomplishment. **Est. \$300 ~ \$500 HWAC# 43623**

**Lot # 4037** Nevada, Tonopah **Tonopah Drug Co.** Tonopah Drug Co. bottle, clear, 6.25" tall. A classic Nevada mining camp, Tonopah was part of the Nevada mining boom of 1900-1910, with major gold-silver deposits discovered. This bottle dates to about 1907. The company was a prolific user of embossed drug bottles, though there is only one variant in all of the sizes up to 16 ounce. This is the six ounce. Mint, a beauty. **Est. \$80 ~ \$150 HWAC# 43624**



**Lot # 4038** Nevada, Virginia City **Cole Aqua Patent Medicine Style Drug Bottle** This is the A. M. Cole aqua patent medicine style bottle. It is pristine and is the example shown in Ghost Towns and Medicines, page 99. Applied top. These scarce bottles (about a dozen or less known) date from the circa 1865-1870 period. At least one was found in a remote timber camp between Washoe Lake and Virginia City in the 1970's. **Est. \$900 ~ \$2,000 HWAC# 43627**

## BOTTLES & SALOON/BREWING



**Lot # 4039** Nevada, Virginia City **Three Virginia City Bottles** 1) A Lernhart, Druggist, Virginia City, Nevada. 4". 2) W. A. Perkins, Virginia, Nevada. 5". 3) B. F. Shaw, Virginia City, Nevada. 5". Make sure you purchase Fred's new Bottle Book on Drug Store bottles! Lots of information on all three bottles and all three druggists to be found! **Est. \$70 ~ \$120** HWAC# 42655

**Lot # 4040** Nevada, Yerington **Van Alstine Drug Shot Glass** The Van Alstine shot glasses were virtually unknown until the early 1980's, when about 4 were found. Clear, clean, with a mild imperfection top center. Van Alstine ran Yerington Drug in the teens just before WW1. This is the example shown on p 386 of Ghost Towns and Medicines. **Est. \$300 ~ \$500** HWAC# 43628



**Lot # 4041** Nevada, **Nevada Ghost Town Bottles** This is a nice group of



seven bottles dug in Western Nevada ghost towns. The items are from Belmont, Aurora, Pinegrove, and Carson City, found between 1957 and 1973. The items include an Adolf Harris amber whiskey

flask, a miniature Kelloggs whiskey, two medicines, and a beautiful open pontil spice bottle. Two crucibles also accompany the lot, typical of any Nevada mining camp. The collection comes with a sheet from the consigner describing the location and year each piece was found. **Est. \$70 ~ \$150** HWAC# 43559

**Lot # 4042** Nevada / California, **Milk Can and Milk Bottle** Crescent Milk, Reno, Nevada can and Nagli's Sanitary Dairy milk bottle, Niles California. **Est. \$100 ~ \$150** HWAC# 41665



**Lot # 4043** Washington, Seattle **Pioneer**

**Exchange Whiskey Flask** Martin Lutz, clear pint, strong embossing, tooled top, clean and mint. c1900-1908. A beautiful example. If you are a token collector, the Pioneer Exchange tokens are usually available for a nice pairing. **Est. \$300 ~ \$600** HWAC# 42270



**Lot # 4044** Washington Territory, Seattle **A. B. Stewart 8 Sided Medicine Bottle** Rare variety of A.B. Stewart bottle from Washington territory. Clear, 7" tall, not pictured in Ghost Towns and Medicines where the lengthy story of Stewart appears. Stewart was from a family that emigrated to Canada as missionaries. Under harsh conditions, Stewart was forced to venture out on his own. He ended up in Silver City Nevada, where he opened a drug store there, in Gold Hill, Virginia City and Bodie. His drug bottles are among the most collectible in all the West, This is a problem free example. **Est. \$120 ~ \$250** HWAC# 42269



**Lot # 4045** United States, **PATENT Pontil Ale embossed bottle**



Black bottle, 8 3/4" tall, 4" diameter. Embossed PATENT at top. Illegible embossed bottom, the words "glass works" are legible. Chip at top. **Est. \$100 ~ \$200** HWAC# 42218

**Lot # 4046** United States, **15 Beer and Whiskey Bottles** Beer and whiskey bottles, most are embossed. Lot includes: Seipp's, Chicago; Lash's Bitters Co.; T.G. Thorne Old Bourbon Whiskey;



Roth & Co.; and more--15 bottles total. **Est. \$100 ~ \$200** HWAC# 41442

**Lot # 4047**

United States,

**Bottle Collector Color Group** Four nice antique bottles from an old



collection. Two western whiskeys: Kellogg in pint with original embossed top (Barnett 778), Hall Luhrs in pint; Gilka gin in yellow amber (folks love these bottles because of the shape and the embossed scene on the bottom of the bottle which can be viewed through the top); and a deep green Ashton Mineral

Water with original top. All are free of chips and dings. **Est. \$100 ~ \$150** HWAC# 42265

**Lot # 4048** United States, **Fancy Top, Rye Whiskey Back Bar Bottle** Clear 11" back bar whiskey with "RYE" in white/red enamel. Swirl fluted shoulder with the constricted top neck and over large top. Unusual. no chips or dings. **Est. \$100 ~ \$150** HWAC# 42268







**Lot # 4049** United States, **Hartwig Bitters with Labels** Very fine example of a Hartwig Bitters in milk glass with labels on two sides. Both labels show damage but are readable. Applied top, no chips. 9.25" tall. This is a German bottles that was very popular in America in the late nineteenth century. **Est. \$150 ~ \$300 HWAC# 42267**

**Lot # 4050** United States, **Hostetter's Bitters** Nice clean problem free Hostetters Bitters in medium amber. Six log. three dots on the base, applied top, huge drip. A shade over 10" tall. Circa 1870's. A beauty.

**Est. \$100 ~ \$200 HWAC# 42266**



**Lot # 4056** United States, **Patriotic Eagle Pitcher** Eagle with shield and two American flags. Some color has worn off. Otherwise in great shape. 12.7 inches high. 6 inch base diameter. **Est. \$100 ~ \$200 HWAC# 42668**



**Lot# 4057** California, Auburn **A.W. Kenison & Co. Brewer**

**Pictorial Calendar** 1915 A complete calendar from this brewer in Auburn known for his bottles. Illustration is "My Old Kentucky Home" and shows sunset/sunrise on country road. Some scuffs to illustration. Overall calendar is in nice shape. 15" x 18" **Est. \$150 ~ \$250 HWAC# 43530**



**Lot # 4051** Nevada, **Searchlight Pair of Whiskey Decanters for Searchlight, Nevada (by Cyrus Noble)** Scarce whiskey decanters from the 1960s or 70s. Choice Nevada collectibles. **Est. \$150 ~ \$250 HWAC# 42406**

**Lot # 4052** Nevada, Tonopah **Whiskey decanter for Ezra Brooks** 1972 "Me and Jim found Tonopah Nevada." Original Brooks decanter. Empty, 1972. Rare. **Est. \$80 ~ \$120 HWAC# 42407**



**Lot # 4058** California, Grass Valley **Rare Risqué Saloon Cigarette Cards from Grass Valley** 1888 These seven early cards (2 5/8 x 1 1/2"). Six say "Tietjen & Parsons / White Labor / Cigar Factory / Grass Valley, Cala." Their shop was at 103 Main Street. **Est. \$250 ~ \$500 HWAC# 42861**



[See Photo Online](#)

**Lot # 4059** California, Markleyville **Cutthroat Saloon Cover for Lotto Tickets** Plastic cover with ad for Cutthroat Saloon, Lotto & Lottery Tickets, Markleeville, CA, 916-694-2150. **Est. \$40 ~ \$80 HWAC# 39669**



**Lot # 4053** United States, **Collection of Three Mining Decanters** Two are identical gold panners made by Ezra Brooks 1969. Approximately 10 inches tall. The third is a throw in item. Please see photo. **Est. \$60 ~ \$100 HWAC# 42707**

States, **Pair of Gold Miner Ceramic Whiskey Containers** Made by Lionstone whiskey, 1969. Porcelain. Nice condition. **Est. \$100 ~ \$150 HWAC# 42706**

**Lot # 4055** United States, **Two Coal Mining Whiskey Decanters** Two whiskey decanters of a coal mining team. Both by Commonwealth Distillery. 1970s. 11 inches tall. Nice mining theme! **Est. \$80 ~ \$120 HWAC# 42446**



**Lot # 4060** California, **Inglenuok Winery Postcard Group** Lot of 8. King of the early California cabernet sauvignon! 1) Two early cards with the same exterior view. One mailed in 1912 and the other in 1916. 2) Six unused RPPCs: five of the same exterior view of the winery (four are identical, one has different text), and one of a different exterior view. Some have bends. **Est. \$25 ~ \$60 HWAC# 19034**

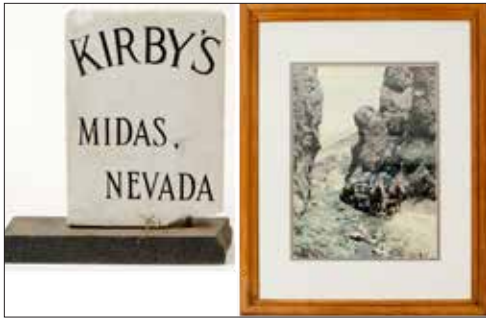
[See Photo Online](#)



**Lot # 4061** California, **Western Liquor Licenses & Photo - Perfect for the Saloon Collector** Lot of three. 1) Nicely framed 1915 Saloon license to E & B Branchini(?) in Sonoma. 2) Framed photo of what appears to be a miners cabin or small two bed dorm room with two men prominently holding Schlitz beer. 3) 1877 US Liquor License. Issued to Sauther. Framed ad for the Wim. S. Turner Distilling Company of Cincinnati. **Est. \$150 ~ \$300 HWAC# 42817**

**Est. \$150 ~ \$300 HWAC# 42817**

## BOTTLES & SALOON/BREWING



**Lot # 4062** Nevada, Midas **Marble Saloon Sign from Midas, Nevada** "Kirby's Bar is like going from Currier & Ives to the Old West of Frederick Remington. A pot bellied stove warmed us and kerosene lamps provided the light.

An honest-to-god Old Coot pours the drinks and occasionally utilized the strategically placed spittoon," was one person's description. Over the intervening years it has been turned it into the Midas Saloon & Dinner House, one of the truly wonderful and unique places in all of Nevada. Base has been broken and bottom right of marble sign has very chip in it. (Please see the photograph. Very heavy. Needs to be picked up or shipping will be costly. This is a newer piece, but still full of history of Kirby's and the almost ghost town of Midas! A great garden piece! Also included is a hand colored photo from Midas of two wagons travelling through rocks. **Est. \$100 ~ \$500 HWAC# 41749**

**Lot # 4063** Nevada, Virginia City **Extremely Rare California Saloon Tip Tray** c1910's "California Saloon / Virginia City, Nevada / Albert Schnitzer, Prop." Produced by Lina. Copyright by K. T. Company of Cincinnati. Very nice condition. A few small worn spots on sides. Color is still pristine. We do not know of any others! **Est. \$1,500 ~ \$2,000 HWAC# 42665**



**Lot # 4064** New York, Buffalo **Iroquois Beer Sign and Coaster** Metal Iroquois Indian Head Beer sign and coaster. **Est. \$200 ~ \$400 HWAC# 41440**

**Lot # 4065** Wisconsin, Milwaukee **Pabst Beer Steel Hoop** Pabst Beer steel hoop. Barrels of all sizes were made from vertical strips of oak called staves held tightly together by horizontal steel hoops. In order for this to be watertight, the staves were tapered so they could create a circular cross-section and bow in order for steel hoops to squeeze them together. **Est. \$100 ~ \$200 HWAC# 43428**



**Lot # 4066** Wisconsin, Waukesha **Rare Clysmic, Reverse Glass Sign** Rare. Sparkling Clysmic, King of Table Waters. Reverse glass in black, gold lettering sign with hanger. Small chip on top left corner. Clysmic Spring Company, Waukesha, Wisconsin. **Est. \$200 ~ \$400 HWAC# 41641**



**Lot # 4067**, J. Walkers **Vinegar Bitters Adv. Mirror** Brass advertising mirror for J. Walkers Vinegar Bitters--The Great Blood Purifier--Give It A Trial--Sold By All Druggists. Front side in good condition, mirror side is rusted and cracked. **Est. \$100 ~ \$150 HWAC# 41939**



**Lot # 4068** United States, **Victorian Bawdy Mirror** Victorian bawdy mirror, red headed woman with rose lying on pillow. Good condition. **Est. \$100 ~ \$150 HWAC# 41937**

**Lot # 4069** United States, **Two Advertising Mirrors** Two advertising mirrors: 1) "Cascarets Did It"--laxative advertising mirror, "All Going Out--Nothing Coming In--They Work While You Sleep." 2" diameter, good condition. 2) "this Maiden Was Dressed In Silk. She Drinks The Horlick's Malted Milk. tea Or Coffee It Does Replace--In Health or Sickness, wins the Race." 2" diameter, good condition. **Est. \$100 ~ \$150 HWAC# 41928**



**Lot # 4070** Massachusetts, Boston **Victorian Woman Advertising Mirror** Compliments of the Boston Mutual Life Insurance Co., Victorian Woman advertising mirror. Oval, 2.75" x 1.75". Good condition, small crack on front, mirror side shows wear. **Est. \$70 ~ \$100 HWAC# 41927**

**Lot # 4071**, **Three Large Modern Beer Advertising Reverse**

[See Photo Online](#)

**Glass Signs plus One Other** Two pieces are identical reverse glass electrically lit Coors beer signs approximately 2 x 3'. The third sign is an Olympia beer's sign of the approximate same size. These two pieces are both framed and probably date to the 1960 to 1980. The lot also contains an approximate 1.5 x 2' sign for Anheuser-Busch Natural Light beer circa 1980. **Est. \$100 ~ \$200 HWAC# 42543**





**Lot # 4072** Hawaii, Honolulu **Pacific Club, Honolulu, Gaming Chip Collection** A choice set of 300 chips from the Pacific Club, Honolulu, Hawaii. This set of chips is well known to chip collectors and is very historic. These chips were used in the 1950s. The Pacific Club was housed in the estate where Princess Kailani was born, the last heir to the Hawaiian throne. She died in 1899 from an infection when she was only 23. After that Hawaii became a territory and the monarchy was disbanded. The Pacific Club was an historic gaming house originally founded in 1853 by Archibald Cleghorn. It got added popularity after the end of World War II and was the go-to gaming house at the time. The chips come in red, white, and blue in 100, 500, and 1000 denominations. At one time, these chips sold for as much as \$45 for a set of three. This is a unique and historic group worthy of any major Hawaii collection. **Est. \$1,000 ~ \$4,000** HWAC# 43678



**Lot # 4073** Missouri, St. Louis **Two Arcadian, St. Louis Gaming Chips** Two choice early chips in red and blue in five and \$10 denominations from the Arcadian, St. Louis. These two chips were originally promoted as river boat chips, but in fact are probably not original though appear to be quite old. **Est. \$400 ~ \$600** HWAC# 43675

**Lot # 4074** Nevada, Crystal Bay Lake Tahoe **Tahoe Biltmore Casino Gaming Token (\$25)** c1960



\$25.00 gaming chip from the famous Tahoe Biltmore Casino on the north shore of Lake Tahoe. Crystal Bay sits on the Nevada-California border, and the local casinos were famous for being the playground of Mr. Frank Sinatra. Excellent condition. 1.5" diameter. **Est. \$300 ~ \$1,500** HWAC# 28410

**Lot # 4075** Nevada, Crystal Bay Lake Tahoe **Tahoe Biltmore Casino Gaming Token (\$100)** c1960 \$100.00 gaming chip from the famous Tahoe Biltmore Casino on the north shore of Lake Tahoe. Crystal Bay sits on the Nevada-California border, and the local casinos were famous for being the playground of Mr. Frank Sinatra. Excellent condition, rare. 1.5" diameter. **Est. \$300 ~ \$1,500** HWAC# 28411



**Lot # 4076** Nevada, Las Vegas **Las Vegas Casino Gaming Tokens Collection** c1960 Souvenir board of gaming chips from famous LV casinos of the day. Many were legends at the time. Names like the Riviera, the Castaways, Circus-Circus and Marina Casino are here, along with gaming chips and tokens. (10) different examples, very rare, in a card measuring approx. 9" x 4". Very good condition. **Est. \$600 ~ \$1,600** HWAC# 28420

[See Photo Online](#)

**Lot # 4077** Nevada, Reno **Harolds Club 1967 Calendar, et al** c1967 Lot of five. 1) March 1967 calendar of employees playing cards. 2) Gaming guide that explains how to play your favorite games. 3) San Francisco to Reno map. 4-5) Ads, ripped. "My friends, when seeing Reno town, make Harolds Club your goal, if by chance you lose your pants, the fun is worth the toll!" **Est. \$50 ~ \$70** HWAC# 42835

[See Photo Online](#)

**Lot # 4078** Nevada, Reno **Nevada Gambling Ephemera (Bank & Postcards)** A Harrah's Reno slot machine bank (6") tall. Also 20 vintage postcards from Reno casinos and the El Capitan in Hawthorne. **Est. \$30 ~ \$80** HWAC# 25300

**Lot # 4079** Nevada, Reno **Reno Silver Gaming Token Collection** Limited edition Ten Dollar Gaming Tokens from various Reno casinos. Nine tokens: El Dorado, Peppermill, John Ascuaga's Nugget, Silver club (3). Silver Legacy (2) and the Comstock. Bi-metallic, the inner core being .999 pure silver. Each weighs 43.9 grams including the plastic case. **Est. \$100 ~ \$200** HWAC# 43529





# GAMING



**Lot # 4080**  
Nevada, Reno  
**United States Bicentennial Souvenir Casino Token 1976**  
Bicentennial commemorative \$25.00 token, rendered in .999 silver. From the

Holiday Hotel and Casino, on the bank of the Truckee River. 1776-1976. Replica of the Eagle and Liberty Bell on the reverse, with the Holiday Hotel logo on the obverse. In fine condition, with some minor wear. Rare. 1.5" diameter. **Est. \$250 ~ \$780** HWAC# 28409

**Lot # 4081 Nevada, Virginia City Gambling Licenses for The Delta Bar in Virginia City**

Two State gambling licenses for The Delta Bar Games (Len Haffey, J. Viani, J. Zalac, E. Colletti) in Virginia City, Nevada. One was issued for the fourth quarter of 1951 ending December 31, 1951 No.229. The other one is for the second quarter of 1952 ending June 30, 1952 No. 445. Both are autographed by the State Tax Commissioner William G. Gallagher. **Est. \$100 ~ \$150** HWAC# 40139

[See Photo Online](#)



**Lot # 4082 Nevada, Antique Roulette Table Plus Gaming Chips** This is a fabulous antique gaming table purchased by the consignor in Virginia City, Nevada in 1960. The table is original,

probably made by Mason & Company before gaming prohibition in 1910. The tabletop is lacquered felt, made by the Reno Gaming Supply Company (probably c. 1940). The roulette wheel itself, of superior construction and design, was made by Nolan Company of Los Angeles, California. Gorgeous inlaid design on the wood. The wheel also probably dates to the late 30s or 1940, corresponding with the repeal of gaming prohibition in Nevada. Classic claw design on the wood legs. The base of the table is just over 8 feet and the narrow with four players is 43 inches. The width, including space for dealers, is 58 inches. Comes with original cashbox and two boxes of worn pre-1920 gaming chips (featuring swastika). It makes sense that the top and wheel have been restored/replaced in relation to the rest of the table. When Prohibition started, tables like these were moved into storage and sat for years. Decades later, when gaming was again allowed and the table was brought back out for play, no doubt the table surface and wheel would have been very worn and needing repairs/restoration. Because of its size and weight, this item is local pick-up only. **Est. \$4,000 ~ \$8,000** HWAC# 43418

**Lot # 4083**  
Nevada,  
**Handmade Sealskin & Leather Vest w/ Card Symbols**  
c. 1930's  
Handmade Sealskin & Leather Vest



w/ card symbols. Probably handmade for a dealer at a casino. Incredible vest had display of card symbols--spade, diamond, heart and club hand sewn in suede leather on back. Jacket is lined in red silk. women's size medium. Must see! **Est. \$150 ~ \$300** HWAC# 41975



**Lot # 4084 Nevada, Bag of Tahoe-Reno Gaming Tokens**  
Brilliant Uncirculated \$1 copper gaming tokens from the Nevada Lodge Lake Tahoe and Nevada Club Reno. Original bag of 1000, sealed by the casino. From the great Fitzgerald Collection, and the last of any quantity of these tokens. Sold as a collectible ONLY. Buyer must sign responsibility waiver for use of the tokens. **Est. \$350 ~ \$1,200** HWAC# 30804

**Lot # 4085**  
Nevada,  
**Second Bag of Reno/Tahoe \$1 Gaming Tokens 1965**

Brilliant Uncirculated \$1 copper gaming tokens from the Nevada Lodge Lake Tahoe and Nevada Club Reno. Original bag of 1000, this bag unsealed and uncounted. From the great Fitzgerald Collection, and the last of any quantity of these tokens. Sold as a collectible ONLY. Buyer must sign responsibility waiver for use of the tokens. **Est. \$350 ~ \$1,000** HWAC# 30805



**Lot # 4086 Nevada, Four Ceramic Nevada Gaming Pieces** Two beautiful fall color plates from the Home Café in Hawthorne, Nevada. Heavy China. Approximately 9 inches in diameter. Also, an 8 inch bowl from the Holiday in Reno with the sporting motif. The last piece is a drinking glass from Dick Graves Nugget in Sparks, the early version of the Sparks Nugget. This is a nice group of collectible Nevada China. **Est. \$100 ~ \$200** HWAC# 43679





**See Photo Online**

**Lot # 4087 Nevada, Nevada Gaming Casino Chips** Lot of 17. All \$5. Twelve Circus Circus, one Sam's Town in Las Vegas, two Four Queens of Las Vegas-one is commemorative, one Hotel Nevada in Ely, and one Baldini's in Sparks. **Est. \$60 ~ \$150 HWAC# 43800**

**Lot # 4088 New Jersey, Atlantic City Five Caesars World Specimen 1990 Sinking Fund Bonds** 1974 12.5% Subordinate Sinking Fund Debenture Due 1990. 500, 1000, 5000, 1000, and blank. Unique and Amazing Condition! Names are punch cancelled. **Est. \$175 ~ \$400 HWAC# 37228**



**Lot # 4093 zCuba, Eight Postcards from Cuba Gaming Houses** Three of the cards are 1925 or earlier, a fourth card is approximately 1940, and the other three cards perhaps 1950s or 60s. Very nice group if you collect Cuba gaming chips or tokens. **Est. \$100 ~ \$250 HWAC# 43576**



**Lot # 4094 Early Ivory Pictorial Gaming Chip** Gorgeous engraved gun, fishing rod and fishing creek pictorial chip on both sides. A choice original pictorial private gaming chip. **Est. \$200 ~ \$300 HWAC# 43660**



**Lot # 4089 New Jersey, Atlantic City Harrah's Engraving and Proof 7.5% Bond** 1976 Lot of six items. Includes bond in four different stages. Many have notes

written on them. Two sets of instructions from Harrah's to the printer. Includes a gorgeous mounted prototype that is cut and pasted on hard stock. Very unique and excellent shape. **Est. \$275 ~ \$400 HWAC# 37229**

**Lot # 4095 Early Ivory US Gaming Chip** A nice early US ivory gaming chip with an eagle at the center. Crack through center. Choice and rare. **Est. \$100 ~ \$200 HWAC# 43664**



**Lot # 4096 Early Octagonal Gaming Chip** The Dexter Saloon, no. 25 on the reverse. These chips are not original and for years were sold as original. Sold here as a collectible art gaming piece. **Est. \$200 ~ \$300 HWAC# 43579**



**Lot # 4090, Various Bar and Casino Tokens** Lot includes: 9 tokens for the Pot Belly Saloon, Campbell, CA; 1 for John Ascuaga's Nugget, Sparks, NV; 11 casino tokens--Caesars Tahoe, Harvey's Hilton, Sundowner, Lido, Harrah's, and more **Est. \$50 ~ \$100 HWAC# 41436**

**See Photo Online**

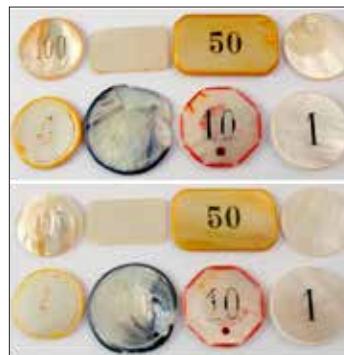


**Lot # 4091, Framed Original Tin Type of Three Men Gambling** Frame is 6.5 x 4.5". Photo is 3 x 2". Two men are looking distrustfully at the third. **Est. \$200 ~ \$400 HWAC# 2820**



**Lot # 4092, Pool Hall Lot** Great lot: five photographs of old pool halls, all matted 7" x 9" and one framed. Great photos! Also included an advertising card for The J. M. Brunswick & Balke Co., Billiard Table Manufacturers. **Est. \$200 ~ \$400 HWAC# 43412**

**Lot # 4097 Early Pair of Gaming Chips** An early pair of gaming chips, circa 1900 to 1920. One is a fancy ivory 25, and the other has a flower with a red border. A pretty pair. **Est. \$100 ~ \$200 HWAC# 43665**



**Lot # 4098 Eight Different Mother of Pearl Gaming Chips** Round, octagonal and rectangle dollar. Denominations from 1 to 100. A nice group! Please inspect the photo. **Est. \$80 ~ \$200 HWAC# 43668**



# GAMING



**Lot # 4099 Four Different Foreign Gaming Chips** Four foreign gaming chips of different denominations and styles. One of the finest is a very ornate inlaid five chip, a second is a large oval ivory 100 and so forth. Please see the photo. A nice group. **Est. \$120 ~ \$200 HWAC# 43670**



**Lot # 4100 Four Different Ivory Gaming Chips** All different, with concentric circles. There are two choice pieces in this group, one the red with blue inner circle, and the other with three black lines. A nice group of ivory chips, circa 1900 or before. **Est. \$100 ~ \$200 HWAC# 43669**



**Lot # 4101 Gorgeous Foreign Gaming Chip** Foreign chip with fancy blue patterns around the edge and a 100 denomination at center. On reverse are the initials of the person who had these made. Circa 1900 to 1910, engraved.

Choice and attractive. **Est. \$100 ~ \$200 HWAC# 43662**

**Lot # 4102 Gorgeous Mother of Pearl Octagonal Gaming Tablet** 500 value. Foreign, choice, very attractive, 1.5 x 2.35". **Est. \$100 ~ \$200 HWAC# 43661**



**Lot # 4103 Nice Gaming Chip (20 Denomination)** Another gorgeous gaming chip, this one engraved in red with the denomination 20 and the owners initials on the reverse. Circa 1910 to 20. **Est. \$100 ~ \$200 HWAC# 43663**

**Lot # 4104 Star of Texas Ivory Gaming Chip** Star of Texas, U.S.M. Packet, \$10, 1870. This chip is well known collect to collectors and thought to be not original. Nonetheless, it's highly collectible as an art gaming piece. **Est. \$200 ~ \$300 HWAC# 43578**



**Lot # 4105 Three Early Gaming Chips** Three chips, two with club patterns a third with the fleur-de-lis. Nice early chips, fine engraving. See photo. **Est. \$100 ~ \$200 HWAC# 43673**



**Lot # 4106 Two Choice French Gaming Chips** Two choice mother of pearl gaming chips from France. Both with pink coloration to some extent. The first one is Cercle d'Aix les Bain's, a second is a private chip. Very fine. **Est. \$100 ~ \$200 HWAC# 43676**



**Lot # 4107 Two Choice Ivory Gaming Chips with Crowns A**



study on monarchies might reveal which country these come from. The engraving is ornate and detailed. These are as nice as you can get! **Est. \$150 ~ \$300 HWAC# 43671**

**Lot # 4108 Two Foreign Gaming Chips** The first one is octagonal with a yellow color denomination 10. The second is a rectangular chip, ex Candore decus. **Est. \$100 ~ \$200 HWAC# 43677**



**Lot # 4109 Two Foreign Mother of Pearl Gaming Chips** Beautiful pair. The first is denomination 10 on a yellow colored mother of pearl with the initials JC. The second is a denomination 20 also from JC in pink. **Est. \$100 ~ \$200 HWAC# 43666**

**Lot # 4110 Two Mother of Pearl Gaming Chips** Two mother of pearl of chips. Octagonal, white and blue, with the initials AGS. Denominations 5 and 100. **Est. \$150 ~ \$250 HWAC# 43674**



**Lot # 4111 Two Nice Early Gaming Chips** Two nice early chips, perhaps circa 1910 to 20, with engraved flowers on both sides. A nice pair. **Est. \$80 ~ \$120 HWAC# 43672**

**Lot # 4112 White Mother of Pearl Gaming Chip** Has the denomination 25 on both sides. Choice. **Est. \$50 ~ \$100 HWAC# 43667**

**See Photo Online**



## Dawson Family Collections



**Lot # 4113 Oregon, Dawson Family History Part 1 - Arrival to America 1887-1950** From the fields of England to the land of Oregon, the Dawson family history is a fascinating look at one family's rich and very detailed history as immigrants to a new world. The first lot tells of Matthew Thorp Dawson and his wife Elizabeth Buxton Dawson settlement from England to Olney, Oregon and later to Roseburg. Fed up with the ancient land

owning system of England, Matthew traveled by boat and landed in Boston in the spring of 1887. He later traveled by train to Oregon and became a U.S. citizen that fall. Shortly after his citizenship was approved, Matthew homesteaded 160 acres at Olney, Oregon. On that property, he built a log cabin, chinked with moss and mud. In 1888 his fiancé made it across the Atlantic and the young couple were married in Astoria, and soon after Matthew began to acquire land including 160 Acres at Tillamook Head. Matthew worked for various farmers around Astoria and Warrenton area, and was listed as a teamster in the 1900 census. Between 1889 and 1908 the couple welcomed nine children, all of whom lived to adulthood. In 1902 the family bought a 2,000-acre ranch from the National Bank of Roseburg. The family made their 250+ mile journey to southern end of the state on horseback and covered wagon and train.

In January of 1925 Matthew bought the 60 acre Ophir Mine from George and Marietta Kohlhagen located in the Steamboat Mining District. In 1932 and 1934 Matthew and Elizabeth signed a lease to Fred and Doris Hoffman to allow them to mine. This lot contains approximately 1 cubic foot of documentation from the family's association with the Ophir Mine.



This is a large lot consisting of family photographs, jewelry, an Eduard Reichert violin with bow and original case c.



1900, serial number #382 with signature. There are several items from England including celebratory pieces from Queen Victoria's Golden

Jubilee. 1910 No. 3a Folding Pocket Kodak with original manual, c.1880 bibles, several items from the family home in Roseburg including pots and pans, dishes, quilts, sewing material, dishes, some silverware, property maps and a 1950s-sewing machine, aerial photographs of property, 30+ years of postal history from c.1890-1975, plus much more! This lot contains approximately 21 cubic feet. This lot is just one of three fabulous large lots perfect for any



museum or historical archives. The consignor has also painstakingly recounted an even more detailed family history available digitally online. Additional photos are also available online.

More information and photographs are available upon request. The family also has retained some of the original furniture that is available should someone wish. Please see online for a detailed history of the family. **Est. 1000 ~ 2000 HWAC# 41870**



**Lot # 4114 Oregon, Dawson Family History Part 2 - Zita Vinson** Zita Leota Vinson Dawson was born in Pueblo, CO on June 3, 1908. Zita would later move to Oregon and in 1926 she would marry Frank Dawson, the 7th child of Matthew and Elizabeth Dawson. The Vinson family was originally from Bellow Falls, Vermont, but made the trek out west in the late 19th Century. The family had ties to San Francisco as Zita's mother Mabel Smith Vinson, made trips to the city for work starting in 1915. There are several San Francisco items in this lots including four pieces that survived the 1908 earthquake. They are a glass dish, two framed French tapestries, and an elephant figurine. Once the Vinson family settled in Medford, Oregon, Zita's mother Mabel opened the "Tiny Tot School" which per our consignor is believed to the

**GENERAL AMERICANA**



first kindergarten in Medford and perhaps the state of Oregon. This lot includes several items including quilts, dishes, silverware, cookware, family photographs, original artwork, books, sheet

music, crocheted tablecloths and bedspreads, homemade children's clothing, Chinese and



Japanese paints and an 1877 French GRAS bayonet once owned by Zita's Grandfather John B. Smith. The approximate size of this lot is 60 cubic feet. The consignor has also painstakingly recounted an even more detailed family history available digitally online. Additional photos are also available online. More information and photographs are available upon request. The family also has retained some of the original furniture that is available should someone wish.  
**Est. 3000 ~ 6000 HWAC# 42635**

family of Roseburg for \$8,000. Although Matthew and Elizabeth remand in Roseburg, Frank moved to the property and built a two-bedroom home and cultivated the land into a farm.

Although Frank and Zita married in Ashland, the people of Steamboat threw the young couple a memorable wedding celebration upon their arrival to their farm home. Life wasn't always easy for the young family on the farm in Steamboat, often Frank would have to leave for other work elsewhere, but always returning home to his wife with a gift of a



new dress to forgive his absences. The couple would go on to have two children and raised them close to family and amongst the beauty and nature of the Steamboat area until 1936.



This lot contains clothing, quilts, glass dishes, cameras, a movie projector,

jewelry, framed artwork, photographs, a copper protractor, books, poker chips, china, perfume bottles, silverware and much more. The approximate



**Lot # 4115 , Dawson Family History Part 3 - Frank and Zita** In 1924 while working in California, Frank Dawson received a letter from his parents Matthew and Elizabeth insisting he come home and buy the part of Steamboat property. Earlier that year, Matthew and Elizabeth bought several acres in Steamboat from the Kohlhagen



size of this lot is 32.5 cubic feet. The consignor has also painstakingly recounted an even more detailed family history available digitally online. Additional photos are

also available online. More information and photographs is available upon request. The family also has retained some of the original furniture that is available should someone wish.  
**Est. 2000 ~ 4000 HWAC# 42227**







**Lot # 4116 , Spectacular 19th Century Model of Henry VIII War Ship in Ivory Model** of a war ship in ivory in enclosed glass case with wood base. The ship itself is 16" long and 12" tall, 4.5" wide. This is a spectacular, detailed model, constructed of ivory and brown wood or baleen. Cabinet made by David Air, New York. Ornatly constructed with brown thread rigging. The only damage is the lower center and rear mast lower beams are broken, easily fixable. Each plank is a separate piece, greatly enhancing the overall character. Probably nineteenth century construction. With three decks of cannon, this ship strongly resembles the western European war ships of the late sixteenth and seventeenth centuries. The ship's figurehead is a lion, which was the figurehead of Henry VIII, which would place this ship in the mid-1500's. With ivory construction, this wonderful and historic piece cannot be sold in California, and some states may have restrictions on its import. We cannot ascertain the source of the ivory, as this is an obvious antique. Please check with your state restrictions on ivory imports, if any prior to bidding. **IMPORTANT: THIS IS A FRAGILE ANTIQUE.** You should consider picking it up in person. **Est. \$5,000 ~ \$10,000** HWAC# 43639



**Lot # 4117 France, Napoleon I Sevres Porcelain "Casket" Box** c. early 1800's Antique Early 19th Century French Napoleon Imperial Sevres Porcelain Box made De la Courtvill--Made in France. This is a beautiful example of French gilt doré bronze work, with filigree and striking ornamentation. The painting on the lid is a bit unusual because trinket boxes from this period most often featured noble and royal ladies. Two more hand painted images, landscapes on front and back sides. It dates from the later period of Napoleon. The extensive design work of the piece give it a jewel-like quality. 8-sided, 4" h x 11" l x 7.5" w. Dark red porcelain "Sèvres" like box decorated with gildings, coat of arms, of the crowned "N", eagles and of the "N" surrounded with laurel. On the lid Napoleon on horseback with troops. Inside, white Porcelain with rose designs. Fine old casket of Sèvres porcelain made at the Royal Factory by commande of Napoleon I for presentation. Said to have been owned by Marie Antoinette's chambermaid. included is book--"Marks & Monograms on Pottery & Porcelain" by William Chaffers. Fourth edition, 1972, hardcover with jacket. **Est. \$2,000 ~ \$5,000** HWAC# 40607



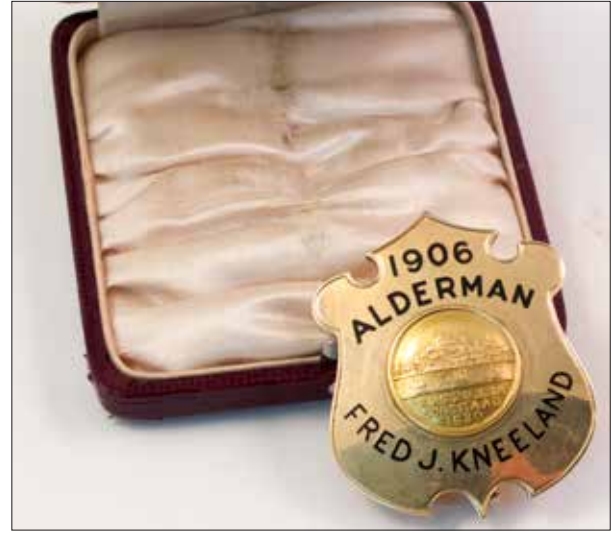
**Lot # 4118 California, San Francisco Chinese Pen Box** c. 1860's Chinese porcelain pen box and cover hand painted with butterflies and flowers. Lid and box do not match, however they fit and were found together. This box was dug in San Francisco in the 1860's. 2-3/8" h x 7-3/8" l x 3.5" d. Good condition, small chip on top of one side. **Est. \$1,000 ~ \$1,500** HWAC# 40608

**GENERAL AMERICANA**



**Lot # 4119**  
United States,  
**Mother of Pearl and Lace Fan**  
c.1700's-early 1800's This framed (19" x 31.5") fan is probably from the 1700's-early 1800's, French or Austrian.

The image is of cupids flying around a thoughtful looking woman. Trimmed in beautiful lace with an etched mother of pearl frame/handle. Exquisite. **Est. \$400 ~ \$700 HWAC# 38601**



**Lot # 4121 , Gold Alderman Badge** 1906 Gold Alderman badge from 1906. 38.5 g by J. D. Young, 14K, Boston. Issued to Fred J. Kneeland. Great condition in original leather box. Beautiful. **Est. \$2,000 ~ \$4,000 HWAC# 41923**



**Lot # 4120** Venice, Island of Murano **Murano Glass Chandelier, the Finest and Fanciest of Venetian Glass Chandeliers** 1997 Murano glass chandeliers are considered the finest of their kind in the world. Made in Venice on the island of Murano, the chandeliers represent some of the finest of all Venetian art glass. It is, quite simply, the best of the best.

This chandelier is of the current Giudecca style, but made about 1997. It is a high-end Murano piece made for an elegant Reno, Nevada home, and has been professionally removed and placed into a temporary shipping crate. The "Giudecca" style glass is clear glass with 24 carat gold flakes rendering an elegant presentation. This chandelier is Model 5285/8, though it appears this model number is now out of use. It is about 33" diameter and 42" high. The piece cost approximately \$8,000 new. It has no damage that we are aware of, inclusive of supervising its removal and packaging. **Est. \$3,000 ~ \$6,000 HWAC# 33017**

**Lot # 4122** California, Los Angeles **Los Angeles County Deputy Sheriff Badge**  
Early Deputy Sheriff's badge for Los Angeles County California. Made by the Los Angeles Rubber Stamp Co. Worn blue inlay on the front and broken pin clasp on the back. **Est. \$100 ~ \$300 HWAC# 40849**

[See Photo Online](#)



**Lot # 4123** Nevada, Las Vegas **Clark Co. Deputy Sheriff 6-Point Star Badge** Possibly a copy, (does not look like original's on back) 1910s-1920s Clark Co. Deputy Sheriff 6-Point Star Badge Las Vegas, Nevada. Nickel, 2.5". The badge is a six-point ball-tipped star in nickel with decorative details on each arm. **Est. \$100 ~ \$300 HWAC# 41926**



**Lot # 4124** Texas, El Paso **El Paso Gold Fireman's Badge** 1965 El Paso Gold Fireman's Badge--47.6 grams. Fireman, El Paso Fire Department, H. C. Peterson. Engraved on back: Presented by Members EPFD on 20th Anniversary of Service, 8-6-45 to 7-6-65. Great condition. **Est. \$3,000 ~ \$5,000 HWAC# 41938**



**Lot # 4125 California, San Francisco Original Shreve, Treat & Eacret Gold Watch and Case** Watch clearly says "Shreve, Treat & Eacret." In the original green leather box with a felt interior. Leather on box is deteriorating, there is missing material on the watch by the ten, and an hairline fracture runs from the center to the 10. George Shreve had



taken over the family jewelry business by 1910. In 1912, however, he severed his relationship with Shreve & Company and bought a controlling interest in the jewelry firm of Treat and Eacret, which then became Shreve, Treat & Eacret. Godfrey Eacret had formerly been a diamond expert for Shreve & Company. The company was purchased in 1941 by the Granat Brothers. **Est. \$400 ~ \$1,500 HWAC# 22750**

**Lot # 4126 United States, Thirteen Rings, Inlaid Stones** Silver rings are inlaid with various stones: 4 turquoise, 2 coral, 2 onyx, 4 mother of pearl, and 1 engraved silver. Rings range from size 7-8. Nice selection. **Est. \$200 ~ \$400 HWAC# 40332**



**Lot # 4127 United States, Gold and Blue Enamel Pendant Watch** Elegant, tiny ladies pendant watch with gold diamond shapes on the hours; gold rim and a beautiful blue enamel back with swirls of color. No identification of maker. **Est. \$200 ~ \$400 HWAC# 28114**

**Lot # 4128 United States, Gold Ladies Pendant Watch** Small gold watch, roman numerals set in mother-of-pearl face with beautiful floral engraving sides and back. "Sovereign" on the face. **Est. \$200 ~ \$400 HWAC# 28115**



**Lot # 4129 United States, Gold and Jet Personal Ring** 10K Gold and Jet with diamond men's personal ring. Size 9. **Est. \$120 ~ \$200**

HWAC# 42060

**Lot # 4130 United States, Jewelry Scientific Devices** Three pieces: slide rule tie clasp (by Swank), two compasses encased in metal pendants. **Est. \$100 ~ \$150 HWAC# 39650**



[See Photo Online](#)

HWAC# 41921

**Lot # 4132 United States, Pipe: Fancy Vadnerwee Mirscaum Pipe.** Fancy scroll pipe from L. Vanderwee, Bd, Anspach, 82, Bruxelles. Inside has beautiful blue and royal purple lining. 8" long. Bowl measures 4" tall. **Est. \$300 ~ \$600 HWAC# 42818**

**Lot # 4133 United States, Pipe: Unidentified with Scroll Work** Small size - 4 1/2". Bowl is 1 1/2" tall. Scroll work in the form of a



bird or dinosaur claw. **Est. \$150 ~ \$300 HWAC# 42819**

**Lot # 4134 United States, Original Brass "Tinderbox"** c1840's Very old, and original brass tinderbox with everything

intact except the strikelite. It contains the original flint, cord, wood chips. A tinderbox is a container made of wood or metal containing flint, firesteel, sulphur-tipped matches and tinder (typically charcloth, but possibly a small quantity of dry, finely divided fibrous matter such as hemp), used together to help kindle a fire. **Est. \$300 ~ \$500 HWAC# 41945**



**Lot # 4135 United States, Antique Bag Sealer** Six and a half inches long with bag of seals

[See Photo Online](#)

included. **Est. \$50 ~ \$100** HWAC# 42215

**Lot # 4136** United States, **Antique**

**Ivory Dental Tooth Key** c.1780-1840 A fine ivory-handled antique dental tooth key. Iron shaft. This dental tooth extracting instrument has rotating bolster and claw. In its 100 years of use the key was developed and improved many times. In the key with a straight shaft ( "Key of old construction " ), the axis of motion is such that the tooth is removed at a right angle to the line of the arch. By using the bolster on the inner side, the shaft is in an oblique direction. Because of that there is a tendency for the claw to exert force in a manner that presses the tooth against the one immediately posterior. Because of this, around 1765, Ferdinand Julius Leber reshaped the straight shaft and introduced a single bend. This improvement reduced the pressure on the proximal tooth. "Key of common construction ". **Est. \$150 ~ \$250** HWAC# 41940



**Lot # 4137** United States, **Antique Wood sled From Holland** c.1910 This sled was brought to Nevada in about 1920 from Holland. Handmade

original vintage Dutch timber sleigh/ sled. bentwood timber frame with metal supports and caps. **Est. \$200 ~ \$300** HWAC# 41670

**Lot # 4138** United States, **Carriage Foot Warmer** Rare wood and punched-tin foot warmer, by an unknown maker, from the mid 19th century. A small tin bucket (now missing) would have been filled with hot coals and tucked inside; the punched holes on the top and sides allowed the heat to filter through. The top is braced with two extra pieces of wood, so you could rest your feet on it without touching the metal, and a metal handle allowed you to carry it around as necessary. **Est. \$100 ~ \$200** HWAC# 41648



**Lot # 4139** United States, **Wagon Spoke Shave** c 1850-65 Antique spoke shave. Used, good condition. 11.5" long. The spokeshave is used to smooth curves cut onto stock. For

generations of woodworkers, the spokeshave was a multipurpose tool used for shaping the seats, backs, and legs of chairs and in cabinetwork. **Est. \$150 ~ \$250** HWAC# 41930

**Lot # 4140** United States, **Ladies' Leather Gauntlets** c. 1900's Ladies' leather gauntlets, brown color, black cuffs, not leather from early 1900's. Well worn. **Est. \$50 ~ \$100** HWAC# 42037



[See Photo Online](#)

**Lot # 4141** United States, **Ladies Shaving Kit** A neat little safety razor. Marked Myatt Ladies Razor. Quite small, head is about 1 by 1/2 inch as are the blades. Comes with a little metal case that fits in a little leather pouch. Lot includes leather strap for sharpening with beautiful embossed silver handle. Also, lovely hand painted (cherry

blossoms) shaving mug--bottom mark is "i/ 8369". **Est. \$120 ~ \$200** HWAC# 41642

**Lot # 4142** United States, **Two Antique Shaving Mugs** Shaving mugs were popular from 1860 to 1900. Many types were made, including occupational mugs featuring pictures of men's jobs. Both of these have an image of a bull, one with carving knife the other has several chef's or butcher's tools. Both are in very good condition. **Est. \$150 ~ \$300** HWAC# 41650



**Lot # 4143** United States, **Order of Red Men Tomahawk** Wood handle 10 1/2 inches long. Crude tomahawk head with eagle and "tote" inside. Possibly from the 1880s. **Est. \$100 ~ \$200** HWAC# 43570

**Lot # 4144** United States, **William Jennings Bryan Cane** 1896 Wooden walking cane with a William Jennings Bryan headpiece with the famous motto: "Free Coinage. 16 to 1" inscribed. 35 inches long. This cane was used for the 1896 Presidential election. Bryan was an American orator and politician from Nebraska, and a dominant force in the populist wing of the Democratic Party, standing three times as the Party's nominee for President of the United States. With this lot you'll truly be walking with American history. **Est. \$300 ~ \$500** HWAC# 42224

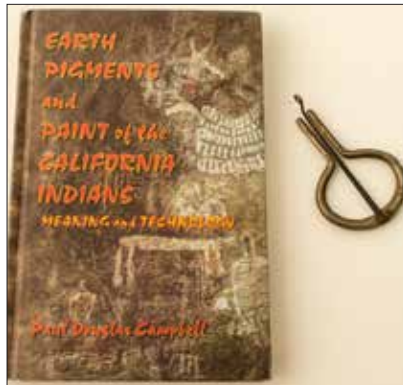


**Lot # 4145** United States, **Victorian Bulldog Walking Stick** Celluloid bulldog and sterling silver base with sterling strap around bulldog's face. Celluloid was an inexpensive replacement for ivory beginning as early as 1850 or 1860. The bulldog motif is very realistic and measures 2.5" x 2". The dog's glass eyes and pleasant expression give it a pleasant appearance. The base of the bulldog is made of silver and looks like a silver buckled belt. The 35.5" wooden shank looks to be cocobolo wood, which is no longer imported into this country. The shaft terminates into a horn tip with a silver base. A very rare piece of Victorian history with an





appealing look and very collectible.  
Very nice, excellent condition.  
**Est. \$400 ~ \$800 HWAC# 40720**



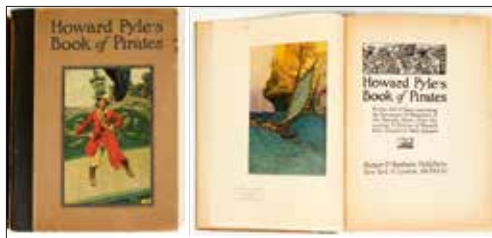
**Lot # 4146** United States, **Vintage Jaw "Jews" Harp** Vintage Iron Jaw Harp, Mouth Harp "Jews" Harp. Used by Mojave Indians, early trade item. From a prominent California archaeologist's collection. This instrument is considered to be one of the oldest musical instruments in the world; a musician apparently playing it can be seen in a Chinese drawing from the 4th century BC. Despite its common English name, and the sometimes used "Jew's trumpet", it has no particular connection with Jews or Judaism. This instrument is native to Asia and used in all tribes of Turkic peoples in Asia. ( **Est. \$150 ~ \$250 HWAC# 41933**



**Lot # 4147** United States, **Miniature Steam Engine** c1930's Weeden Manufacturing Company. 115 volts, 400 watts, catalog number 702. Bright red paint. On wooden platform. **Est. \$150 ~ \$300 HWAC# 42678**

**Lot # 4148** United States, **Howard Pyle's Book of Pirates** 1921 Rare. "Fiction, Fact & Fancy concerning the Buccaneers & Marooners of the Spanish Main: From the writing & pictures of Howard Pyle, Compiled by

Merle Johnson." Harper & Brothers Publishers, New York & London, 1921. Eight chapters and 23 illustrations. Topics include: buccaneers and marooners of the Spanish Main; The Ghost of Captain Brand; Tom Chist and the Treasure Box; Jack Ballister's Fortunes; Blueskin, the Pirate; Captain Scarfield; and the Ruby of Kishmoor. Fun work. Foxing, toning, damage to spine. 12" x 9"  
**Est. \$100 ~ \$200 HWAC# 43515**



**Lot # 4149** United States, **Rare Mickey Mouse Ephemera** Early 1900's Truly fabulous collection. 1) A very early, very rare Mickey Mouse 15" tall stuffed velveteen doll, from a time when Mickey really looked more like a rat! Incredible collector's item. Face is drawn on. Condition good, head a bit loose from neck, wires in shoes poking out a bit. Possibly by Charlotte Clark. 2) A 1920's Dean's rag book. Mickey mouse made from velveteen material covering, shorts, hands shoes, and ears. Fitted to



the shorts are four small yellow plastic buttons. Mickey's face features a toothy grin (correct with the time) over-sized ears and shoe button eyes. A fantastic, highly collectible item and very hard to find. A toy with age related wear, missing his wire tail. Even after all of the negative points that have been mentioned, you will see that actually this is still a lovely rare vintage toy and a must for serious Disney collectors. 3) Mickey Mouse Films. Silly Symphony is a series of 75 animated short films produced by Walt Disney Productions from 1929 to 1939. As their name implies, the Silly Symphonies were originally intended as whimsical accompaniments to pieces of music. As such, the films usually had independent continuity and did not feature continuing characters, unlike the Mickey Mouse shorts produced by Disney at the same time. 4) Very old, hard rubber 6" Mickey Mouse figure. Moveable head. One arm broken off, but in package. 5) The Adventures of Mickey Mouse, Book 1, 1931. David McKay, 1931, Philadelphia. Pictorial Cover. Book Condition: Good. Walt Disney Studios (illustrator). The one that began the Disney empire. Story and illustrations by staff of Walt Disney, no pagination, book bound in color pictorial paper over boards, color illustrated throughout; light wear at extremities, Size: 8.25" x 6". **Est. \$700 ~ \$2,000 HWAC# 33577**

**Lot # 4150** United States, **Three Chinese Signs** 1) Wood sign. Gold lettering on a red background. Roughly translated to "The dragon's spirit engulfs the five directions, first and last the earth is Lord of wealth." Measures 19 x 12". 2) Beautifully framed sign. This is the largest. Frame measures 29 x 19". The writing are poems: left is for Buddha on lotus leaves and the right is about Paradise/Heaven ("the green bamboo in Paradise."). 3) Porcelain sign. Measures 36 x 7". Advertising the medicine ginseng, "a life saving medicine, it fixes everything," etc. Typical of late 1800s/early 1900s. **Est. \$300 ~ \$500 HWAC# 42853**



# GENERAL AMERICANA

[See Photo Online](#)

**Lot # 4151** United States, **Chinese Collectibles Lot (Bottles, Token, Etc.)** Three small apothecary bottles. Two metal coins, two plastic tokens. "Pacific 4 P.M. stamp with Chinese letters. Carved wood piece. **Est. \$100 ~ \$150** HWAC# 39657

**Lot # 4152** United States, **Duck Stamp Print, by Bruce Miller** 1993 Duck Stamp Print, by Bruce Miller, 1993. Print number 7390/14950. Signed by the artist. 17.5" x 18.75". Bruce Miller (1952- ) Original acrylic painting of a pair of canvasbacks by Bruce Miller of Mound, Minnesota. **Est. \$200 ~ \$300** HWAC# 42238



**Lot # 4160** United States, **Five Vintage US Mail Locks** Five vintage brass US Mail combination locks, engraved, REC'D U. S. Mail. Different numbers on back of each. **Est. \$60 ~ \$120** HWAC# 1917



**Lot # 4161** United States, **Trio of Fairbanks Postal Scales** Three scales that were adopted by the US government. Not functioning. Could be used for parts. **Est. \$100 ~ \$200** HWAC# 42100

**Lot # 4162** United States, **Illustrated English Furniture Guide & Historical Magazines on America** Lot of 5. 1) Partial contents of a book entitled Characteristics of Old Furniture Styles in England 1600-1800. About 75 pages with no binding, but fantastic

illustrations of antique furniture. 12 x 10" 2) Four different partial volumes of The



Historical Magazine, and Notes & Queries, Concerning The Antiquities, History and Biography of America, 1859 and 1860. Please inspect. **Est. \$100 ~ \$150** HWAC# 43516

[See Photo Online](#)

**Lot # 4153** United States, **Advertising Postal Covers** Lot of 8 colorful advertising covers. **Est. \$100 ~ \$200** HWAC# 42251

[See Photo Online](#)

**Lot # 4154** United States, **Advertising Postal Covers** Lot of 14 advertising covers from a wide range of companies. **Est. \$100 ~ \$200** HWAC# 42253

[See Photo Online](#)

**Lot # 4155** United States, **Early Fire Extinguisher Postal Cover** 1928 Colorful cover from Hudson Manufacturing of Minneapolis to Sweet-Teller Hardware Company of Boise, Idaho. **Est. \$100 ~ \$200** HWAC# 42250

[See Photo Online](#)

**Lot # 4156** United States, **Food Company Advertising Postal Covers** Lot of 8 postal covers from companies like Hershey Chocolate, Pillsbury Flour Mills, etc. **Est. \$100 ~ \$200** HWAC# 42252

[See Photo Online](#)

**Lot # 4157** United States, **Livestock Advertising Covers** Five pieces of advertising covers featuring livestock companies. **Est. \$100 ~ \$150** HWAC# 42247

[See Photo Online](#)

**Lot # 4158** United States, **Native American Advertising Covers** Lot of ten colorful advertising postal cover, many featuring Native Americans. **Est. \$100 ~ \$200** HWAC# 42248

[See Photo Online](#)

**Lot # 4159** United States, **Tobacco Advertising Postal Cover** 1929 Envelope from Larus & Brother Co. of Richmond, Virginia to Falk Wholesale of Boise, Idaho. **Est. \$100 ~ \$200** HWAC# 42249



**Lot # 4163** United States, **US Newspapers & Magazines (Most 1850s-1860s)** 1840-1914 Lot of 10 pieces. Includes: two different copies of the New Yorker published in 1840 by Horace Greeley

& Co. (prolific publisher, congressman, and passenger in famous Hank Monk stagecoach ride); two 1904 issues of Birds & Nature (with color illustrations); 1868 issue of The Cincinnati Weekly Times; Frank Leslie's Illustrated Newspaper (1858), Harper's Weekly (three different 1858); and a 1914 World War I War Issue No. 4 of Scientific American. There are serious condition issues to some of the pieces. Please inspect. **Est. \$100 ~ \$200** HWAC# 43514

**Lot # 4164** United States, **Caving Prints Collection** Collection of caving prints that consists of 14 pieces from 1860-1890's. Print size ranges from 5" x 9" to 21" x 16" and have come out of newspapers, books, and stand-alone pieces. Great Grouping. **Est. \$120 ~ \$300** HWAC# 40412







**Lot # 4165** United States, **Instant Ephemera Collection** Large assortment of 121 billheads, 3 pristine cigar box labels, 21 political portraits from the 1860s, 2 photos of old cars, and 4 post cards from the 1910

Admission Day Festival. Billheads are mostly 1880s, some older, some newer. **Est. \$240 ~ \$400** HWAC# 35702

[See Photo Online](#)

**Lot # 4166** United States, **Assorted Paper Ephemera** Assorted paper items from different places and on different topics including a Telegraph report and Cover to JW Garrett with cover c. 1887. The Mitchell-Hoover Catalog of US Bureau precancels 7th edition, Hoover Brothers Publishing New York 1931. Good Old Days in Montana Territory, Harrington and Butcher families booklet. McKee Printing 1957. Utah Historical Quarterly Journal Volume 9 from July 1941. The Philatelic Journal of America Stamp Collecting Magazine circa January 1910. 5 mining and manufacturing stock certificates from The Natomas Company in California c. 1956, Trinity Dredging Company c.1923, Blank Yuba Manufacturing Certificate, and 2 Blank certificates for the Keweenaw Mining, Milling, and Leasing in Arizona. c. 1900's. **Est. \$100 ~ \$150** HWAC# 38768

[See Photo Online](#)

**Lot # 4167** United States, **Grab Bag of Photos, Stocks, Etc.** 5 mining photos; 2 dredging photos; mining stock certificates: Pennsylvania Mine, Quincy Mining Co., Calumet & Montana Mining Co.,

Consolidated Ten Mile Mining Co., Dakota Mining, and more; bonds; checks; etc. **Est. \$260 ~ \$400** HWAC# 40306

[See Photo Online](#)

**Lot # 4168** United States, **Unsorted US Check Collection (incl. Arizona, Colorado, California)** Lot of 170. Some duplication. Many pictorial. Earliest is 1825 with other early Eastern checks. Checks from: Del Norte (Colorado), Leadville (CO), Philadelphia, Canisteo (NY), Mexico, Swansea (AZ), Parker (AZ), Los Angeles (Yellow Aster), Iditarod (AK), New York, Cleveland, Independence, Baltimore, Michigan, Pioneer (NV), Tampa, Shreveport, La Porte, Columbus, Milwaukee, Tonopah, Eugene, Helena, Casselton, Santa Fe, and more. A handful have revenue imprints, a larger group have adhesive revenue stamps. Please inspect! (Prag Collection) **Est. \$150 ~ \$300** HWAC# 34960

[See Photo Online](#)

**Lot # 4169** United States, **Antique Trade Advertisements** Over ninety trade cards featuring advertising from all over the country. Colorful, historical, comical. **Est. \$200 ~ \$400** HWAC# 42255

[See Photo Online](#)

**Lot # 4170** United States, **Miscellaneous Stock Certificates Group** 1914-1931 Lot of 5: various stock documents from all over the country, such as the Border Operating Co. Ltd. (2), the Mutual Co-Operative Mining Co. (2) and the Piqua Press Publishing Co. The (2) mining stocks feature attached dated receipts from 1915. All are in very good to excellent condition. **Est. \$32 ~ \$80** HWAC# 28442

**Lot # 4171** United States, **Miscellaneous US Stock Certificate Group (Mining, Oil, Water)** 1892-1938 Lot of 11. Includes: Santa Rosa Water Works (1892); Illipah Basin Oil & Gas Co. (1920); Qua-Jack Lead & Zinc Co. (1918); Coxey Extension Car Step Co. (1914); Chippewa Mining, Manufacturing & Developing Co. (1903); Celtic Union Hall Assoc. of CA (1908); Genter Gold Mining Co. (1938); Salmon River Mines Co. (1932); Annie Laurie Mining, Milling & Smelting Co. (1923); The Cons. Jack Mines Co. (1904); and Chilhowee Mountain Mining & Manufacturing Co. (1919). (Prag Collection) **Est. \$150 ~ \$200** HWAC# 34922

[See Photo Online](#)

[See Photo Online](#)

**Lot # 4172** United States, **Miscellaneous US Stock Certificates & Bonds incl. Railroad and Mining** 1879-1977 Lot of 39 pieces. Stocks include: Dix Mines, Ltd.; Holly Cons. MC; Clara-Swansea MC; Syndicate Hydraulic Mines Inc.; Black Bear Cons. MC; Nevada Birch Creek MC; U.S. Cons. Mines, Inc.; Nevada Victor Mining & Reduction Co. (bond); Noyo Grape Packing Co.; Copper Knob MC; American Commonwealths Power Corp.; Wien Cons. Airlines, Inc.; many from Penn Central Co.; New York Central Railroad Co. (bond); The Pennsylvania Railroad Co. (bond); Wabash-Pittsburgh Terminal Railway Co; Chicago and Alton Railroad Co.; and four other railroad documents. (Prag Collection) **Est. \$80 ~ \$160** HWAC# 39002

[See Photo Online](#)

**Lot # 4173** United States, **Pacific Telegraph & Telephone Group** 1902-1942 Lot of 34. Most are documents from the Postal Telegraph-Commercial Cable Company, which was founded by Comstock mining millionaire John Mackay. Mackay wanted to create a domestic wire network to connect with the trans-atlantic cable. Headquarters were in San Francisco. A few of the documents in this group date to 1902 and thus still list John W. Mackay as president (he died that year). Other documents list his son, Clarence Mackay. The group is a mix of telegrams and messages on company letterhead, mostly related to the location of poles, deeding of property, etc. in locations on the West Coast. There are also a few illustrated holiday documents and one Western Union Armed Forces telegraph form and message with envelope. (Prag Collection) **Est. \$100 ~ \$250** HWAC# 34778

[See Photo Online](#)

**Lot # 4174** United States, **Miscellaneous US Telegraph Collection** 30+ pieces, most Western Union. Includes: 1899 Northern Telegraph Co. pass; booklet on Morse Telegraphy, 1868 telegram from New York to Austin, Nevada regarding ore receipts; 1882 Montana Territory telegram (Benton) on War Dept. letterhead regarding tobacco shipment; 1883 Virginia City, Nevada telegram; numerous other telegrams, many Colorado, post-1900; and four illustrated holiday telegrams. (Prag Collection) **Est. \$120 ~ \$200** HWAC# 34772

**Lot # 4175** United States, **Watch Company Stocks & Ephemera** Lot of nine items. 1) From the Waltham Watch Company: five stocks, three issued (1929-45), all cancelled. Also, a pictorial lettersheet issued 1908 regarding watches repaired. 2) From the Elgin National Watch Company: two issued and cancelled stocks (1923 & 1930). Also a 1922 Christmas themed brochure for the watches from a Los Angeles jeweler. (Prag Collection) **Est. \$100 ~ \$200** HWAC# 34877

[See Photo Online](#)

[See Photo Online](#)

**Lot # 4176 United States, Premium Stock Collection** 9 Stock certificates from various corporations that are all in good condition and are fairly high-grade pieces. Stocks include: United Printers and Publishers / Delaware / 1943, Tobacco Products Corporation / Virginia / 1923, Dewey and Almy Chemical Company / Boston / 1952, Boston Elevated Railway Company / Boston / 1931, East Shore & Suburban Railway Company / California / 190\_, Philadelphia Traction Company / Philadelphia / 1906, Philadelphia Rapid Transit Company / Philadelphia / 1927, New York Railways Corporation / New York / 1927, The Johnstown, Gloversville and Kingsboro Horse Rail Road Company / New York / 189\_. **Est. \$100 ~ \$200 HWAC# 40147**

**Lot # 4177 United States, Western Stock Collection** Over ten stock certificates and a Nebraska real estate first mortgage bond. Carson Mineral Rubber Company, Overlook Consolidated Mining Company, Massachusetts and New Mexico Mining Co. **Est. \$60 ~ \$120 HWAC# 28518**

[See Photo Online](#)



**Lot # 4178 United States, Oil Painting of Stone Building by Stream** Oil painting of stone and wood building by stream. Possibly logging camp. Open cars on track. Artist unknown. Painting is 14.5" x 21.25", nicely framed in gold frame, 20.25" x 27.25". **Est. \$750 ~ \$1,500 HWAC# 43401**



**Lot # 4179 United States, Historical Firearms Related Print** "What Do You Want to Do with the Rifle", drawn by Gilbert Gaul [See story, "Why they Shut Down at the Higuierita."] Lithograph copy print, by Schein & Schein, Historical Prints, San Francisco. Framed 17.75" x 21.75". Appears

to be hand colored. The original illustration was in Harper's, 1889. **Est. \$300 ~ \$400 HWAC# 38600**

**Lot # 4180 United States, Three Western Prints** 1) Cabinet card of woman's 80th birthday, Oakland, 1881; 2) Litho image from page of "Uncle Tom's Cabin" by Harriet Beecher Stowe; 3) color postcard of: "Bringing in the Life Boat", postmark, 1907. **Est. \$150 ~ \$300 HWAC# 38478**



[See Photo Online](#)

**Lot # 4181 United States, Lorne Greene Plaque** 1967 Lorne Greene plaque. 50th Anniversary Medal authorized by the Congress and the President of the United States, awarded in 1967 to Lorne Greene for outstanding contributions to American Agriculture presented by the Twelve Federal Land Banks. **Est. \$100 ~ \$250 HWAC# 41444**

**Lot # 4182 United States, Meeting Hall Commemorative Sign** An inlaid metal commemorative sign previously on the side of a meeting hall built with the appropriations of congressmen. Reads as follows, "Members of the House of Representatives who made the appropriation for building the Hall and first met here, Session 1909-10. Speakers-J.J. Ellis, Sinoe Co. Mont. County { A.B. Mars, J.E. Port, C.R. Branch, H.M. Ricks.} Grd. Bassa do { S.A. Liberty, W.H. Strong, R.L. Griggs.} Sinoe do { J.K.P. Greene, W.H. Strong} Maryland do { P.J. Hutchins, T.G. Bendell, S.J. Dossen.} Territory {Grd. C. Mont, E. Skinner.} Location of Hall unknown, handwritten note suggests Liberia in Africa. 20" x 18" **Est. \$200 ~ \$400 HWAC# 40435**

[See Photo Online](#)

[See Photo Online](#)

**Lot # 4183 United States, Musician Photographs** 2 photographs total of Dude Martin and his Round-Up Gang and a group photo of Al Pearce, Edna O'Keefe, Cal Pearce, Jean Clarimoux, Norman Nielsen, Hazel Warner, Abe Bloom, Lord Bilgewater (Monroe Upton), Mac, Tommy Harris, Chas. Carter, Edna Fisher, and Cecil Wright. The Dude Martin photo has been signed in pencil by Rosalie Jackson. Both 8" x 10" and in good condition. **Est. \$60 ~ \$120 HWAC# 40163**

**Lot # 4184 United States, Political Currency Group** Eight pieces of American political currency. Two small pieces advocating greenbacks to burn the bonds and bounce the national banker. One note for a quart of milk, on for a glass of beer. Five dollar note of "absolute money", Five dollar note "secured by all the property of all the people of the United States", Five dollars of "perpetual money" and one "fiat servant girl" note issued by the Hon. S.W. Puffan Grunt, treasurer. **Est. \$60 ~ \$120 HWAC# 43523**

[See Photo Online](#)



**Lot # 4185 United States, Three Items from the Reyes Family** 1) "The Women and Girl Workers of the Civil War, 61-65" ribbon. This was an early recognition of the roll of women during the Civil War. Probably early 1900's. Faded and fraying, but an early show of support for women in this country. 2) "Los Inmortales" of Washington, Lincoln, and Grant.



Cigar related: a Louis C. Wagner label with Lincoln, Washington & Grant.  
3) Vintage Leather Common Sense K&L Envelope Fly Book. Contains the original flies. **Est. \$100 ~ \$150 HWAC# 38045**



**Lot # 4186** United States, **Leatherette Box with Two Oval Photographs** c.1860s  
This is a very interesting hand colored photographic piece in fabulous condition. Case measures 2.25 x 3.5". Photographs (appear to be from CDV) inside are of an older couple that are unidentified. Ovals are approximately 4 x 3cm. **Est. \$600 ~ \$800 HWAC# 38145**

[See Photo Online](#)

**Lot # 4187** United States, **Trophy Plate, Ladies' Trap Champion** 1983 Lenox china set in silver rim trophy plate, Ladies' Trap Champion, 1983. Enamel painting of Indian Chief by Harry Held. Embossed tomahawk on silver engraved "California Indians". **Est. \$100 ~ \$200 HWAC# 42032**

[See Photo Online](#)

**Lot # 4188** United States, **Two Indian Head Silver Spoons** Two Indian head silver spoons. One is a rare vintage medicine spoon--handle embossed "America". Back of handle engraved A. 1. Coin Silver Co. The other spoon is a demitasse, marked sterling and engraved on back of handle "July 29, 04". **Est. \$70 ~ \$100 HWAC# 42012**

**Lot # 4189** United States, **Two Pocketknives** 1970's Two identical pocketknives from the 1970's. Engraved pictorial in each side of trees and mountains and a golden eagle attached on each side, too. Blade has the number "200" on it. Both are new, never used. **Est. \$100 ~ \$200 HWAC# 42052**

[See Photo Online](#)

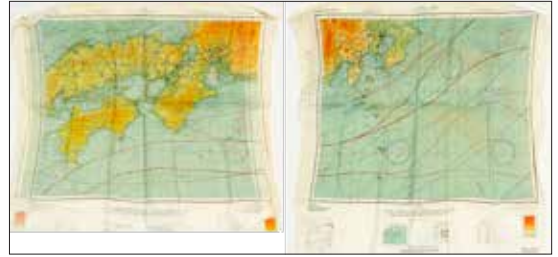


**Lot # 4190** United States, **Unidentified Early Fire Department Photograph** c1875  
Two teams lined up in front of their hand pulled fire wagons. Many spectators are looking on. There is not a single female in the photograph. Helmets are hard to read, but says "EAGLE." **Est. \$200 ~ \$500 HWAC# 42840**

[See Photo Online](#)

**Lot # 4191** United States, **Naval and Royal Air Force Albums** Lot includes: Album of Modern Naval Craft, Album of Aircraft of the Royal Air Force, nine cards of various images. **Est. \$40 ~ \$80 HWAC# 41513**

**Lot # 4192** United States, **World War II Flight Soldiers Silk Maps** 1943 & 1944 Two color silk maps 1943 & 1944 showing Southeast China / Luzon Island and Japan. These maps were carried by air soldiers in case they crashed and needed to navigate back to safety. Silk meant they would be waterproof in case of an emergency water landing. 24" x 19 and 24" x 25. War and Navy Department. **Est. \$100 ~ \$200 HWAC# 43517**



[See Photo Online](#)

**Lot # 4193** Montana, **Six World War II Naval Covers** c1943 1) Launching of USS Helena in 1940. 2-3) 1940 USS Helena business reply envelopes. Both with two two cent red stamps. 4) 1946 USS George Clymer (spelling?). 5) 1944 censor envelope. 1942 'free' censored envelope **Est. \$25 ~ \$50 HWAC# 36824**

**Lot # 4194** United States, **Original Scientific American Broadside for German WWI Weapon** 1914 45" x 16" Great original broadside from Scientific American showing the new German siege weapon that fires a 42cm shell. There is an exact size image of the shell in the background, as well as 5 illustrations: Grunson Armored Fort, two illustrations of cupolas, damage to a barrette, and a German siege howitzer. Supplement from December 5, 1914. A few tears along the folds. Would look fantastic framed! **Est. \$100 ~ \$200 HWAC# 43512**



**Lot # 4195** Alabama, **Mobile Mother and Child Daguerreotype by Chauncey Barnes** c1855 Barnes was active in Baltimore, Md. in 1844 and 1845, and in Mobile, Ala. in 1844 and again from 1852 to 1859. In 1854 he daguerreotyped an eclipse of the sun, and in 1855-1856 introduced ambrotypes to Mobile. In the same year he advertised the "Mobile Daguerreian Gallery" and noted he employed the best artists. An imprinted case liner reads "Barnes/Artist/Mobile, Ala." Case is 4.5 x 3.5". Cover is detached. **Est. \$700 ~ \$1,000 HWAC# 38147**

[See Photo Online](#)

**Lot # 4196 Alaska, Nome Alaska Travel Booklet and Tusk/ Bone Slides** A travel booklet called "A Handbook of Vacation Trips in Alaska and The Yukon On The White Pass and Yukon Route". It

is approximately 50 pages and illustrated in black and white. Also includes 2 Bone/Tusk Slides with gold nugget decoration. 1 Says Nome and the other says M. Not a significant amount of gold. **Est. \$80 ~ \$120 HWAC# 40146**

**Lot # 4197 Alaska, Alaska Archive** Large group of Alaska items: "Alaska Fishing Fleet" 12 x 9" photo; Mount Denali photograph 19 x 11" ; picture of Garibaldi Park, British Columbia; framed photo of "Alaska Glacier Country"; "The Spell of the Yukon and other verses" hardbound book; "Alaska-Yukon Favorites" paperback book; two stereocards: the Chilkoot Trail filled with pilgrims and placer mining near the Yukon River; 1925 postdated post card of McCarthy, Alaska. **Est. \$100 ~ \$200 HWAC# 42225**



**Lot # 4198 Alaska, Vintage Ulu / Flensing Knife (Alaska Gold Rush Era)** c. 1900 This vintage ulu or flensing knife is from the Alaska gold rush period. Used for skinning seals, fish, etc. 7.5" long from handle to tip of blade. 6.75" long blade (from side to side). Metal blade, wooden handle. It has been in the Johnson family of Virginia City. **Est. \$100 ~ \$300 HWAC# 41902**

**Lot # 4199 Alaska, Alaska, Canadian Pacific & Other Telegraph Group** Lot of 24. Includes: six White Pass & Yukon Route telegrams (post-1900) plus a telegraphic translation sheet; two Canadian Pacific Railway Co. telegraphs (post-1900); eleven telegrams from the Postal Telegraph-Cable Co.; three Western Union documents; and a United States Signal Corps telegram (Skagway, 1923). (Prag Collection) **Est. \$120 ~ \$200 HWAC# 34773**

[See Photo Online](#)



**Lot # 4200 Arizona, Bisbee 1908 Miners & Merchants Bank, Bisbee Calendar Beautifully framed** 1908 January. Picture of a rancher on a horse drawn sled with his cows tagging along. Frame is really impressive!!! 26 x 23" Calendar is 20 x 19". **Est. \$300 ~ \$600 HWAC# 42825**

**Lot # 4201 Arizona, Tombstone Group of Tombstone, A.T. Checks-1880's (4)** A group of four rare 1880's Tombstone, A.T. checks. 1) Agency Pima County Bank, Tombstone, Arizona, 1881, payable to J.M. Chavez, signed by P.W. Smith, manager. RN-G revenue. 2) Cochise County Bank, Tombstone, May 1882. RN-G. Payable to "hauling timber" and signed by Black Bear Copper Mining Co. and illegible name below. Oval "Paid" stamp on the front in red and oval stamp on the back for Hudson & Co. Bankers, Tombstone Branch, May 22, 1882. 3) Cochise County Bank, Tombstone, A.T. 1887. Check payable to Chas. Jacobs & Co. and signed by A.E. Jacobs, cashier. 4) Agency Pima County Bank, Tombstone, Pima County, Arizona 1881. Cert. of deposit issued to W. Hanscom and signed by P.W. Smith. Oval stamp reads "Paid" on the front and endorsed by Wm. Hanscom on the back. This is a scarce group of territorial checks and all in nice condition. **Est. \$300 ~ \$500 HWAC# 41337**



[See Photo Online](#)

**Lot # 4202 Arizona, Tucson Original Tucson, Arizona Territory Cabinet Card** c.1881 Original cabinet card from Buchman and Company, Tucson Arizona Territory. Circa 1881 (Mautz). **Est. \$40 ~ \$80 HWAC# 43562**

**Lot # 4203 Arizona, Arizona Map with parts of Sonora and California** c1860 9 x 18". Possibly accompanied R. Pumpelly's Narrative. c1859-61. **Est. \$300 ~ \$600 HWAC# 41840**



[See Photo Online](#)

**Lot # 4204 Arizona, Two Arizona Indian Territories Maps** 1895, 1907 1) Indian Territories on the Upper Gila & Salt River Valleys. 13 x 13". Plate XI. 1907. 2) Arizona State Map. c1895. 13.5 x 11". **Est. \$100 ~ \$150 HWAC# 41839**

**Visit our online catalog at  
www.HolabirdAmericana.com  
Zoom in and see detail on  
high resolution images of  
ALL LOTS**